

JA Solar Module's Reflectivity Analysis



JA Solar

May 2013

Module's Reflectivity Analysis

Test Information

- **Test Organization:** National Center of Supervision & Inspection on Solar Photovoltaic Products Quality (CPVT)
- **Test Equipment:** Spectrophotometer from Perkin Elmer
- **Test Standard:** ISO 9050: 2003
- **Declaration:** Just only for reference.

The following reflectivity curves are only for samples.

Module's Reflectivity Analysis

Different reflectivity of different module type

Control Group	Module Type	Reflectivity*(%)
Group 1	White Module	7.15
	Black Module	2.99
Group 2	Coating Module	7.15
	Un-coating Module	10.16
Group 3	Mono Module	7.15
	Poly Module	6.04

It is weighted average reflectivity for all front area of module surface(Except the frame).
Spectral range: 380nm-780nm(Visible light).

Module's Reflectivity Analysis

Reflectivity curves of White & Black Modules

Average



73.79%

60.17%

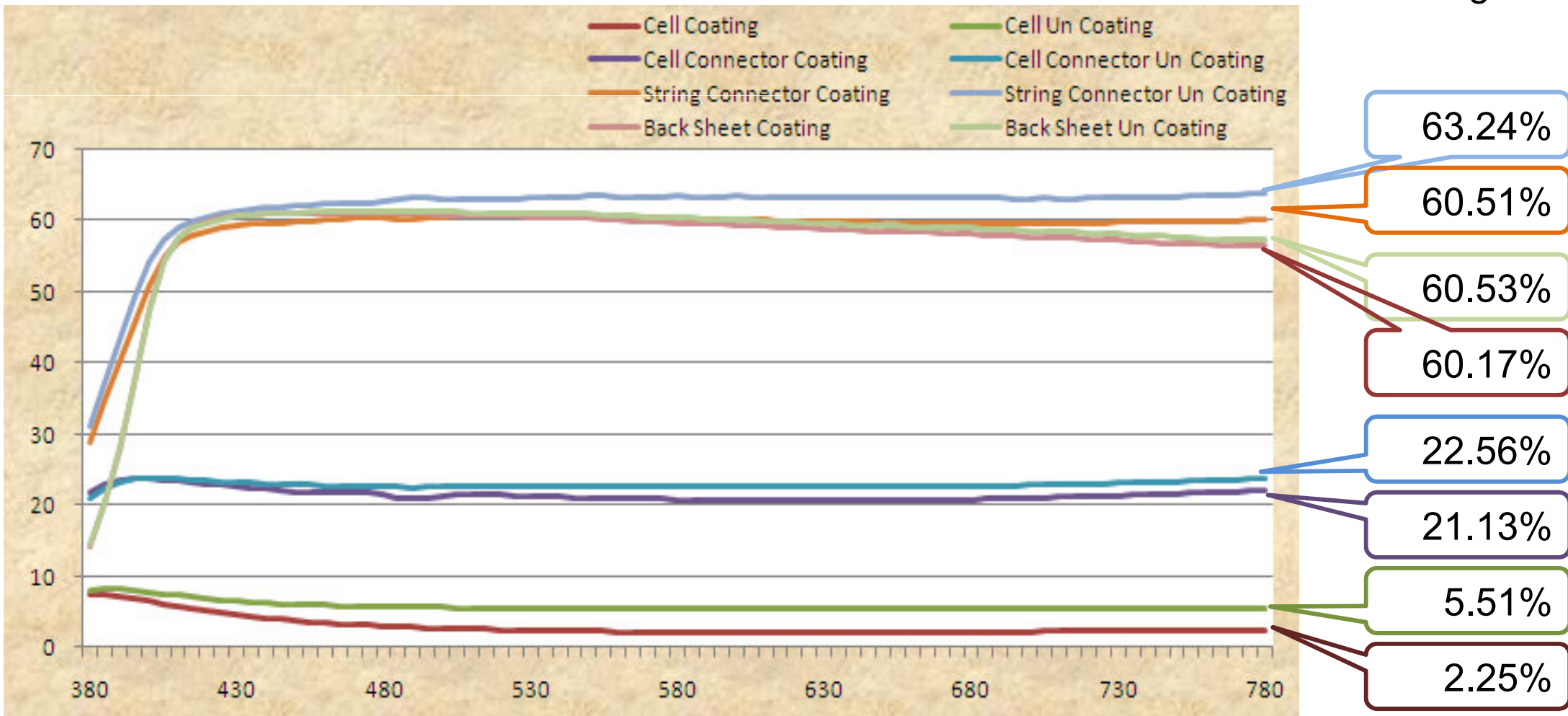
4.75%

1.56%

Module's Reflectivity Analysis

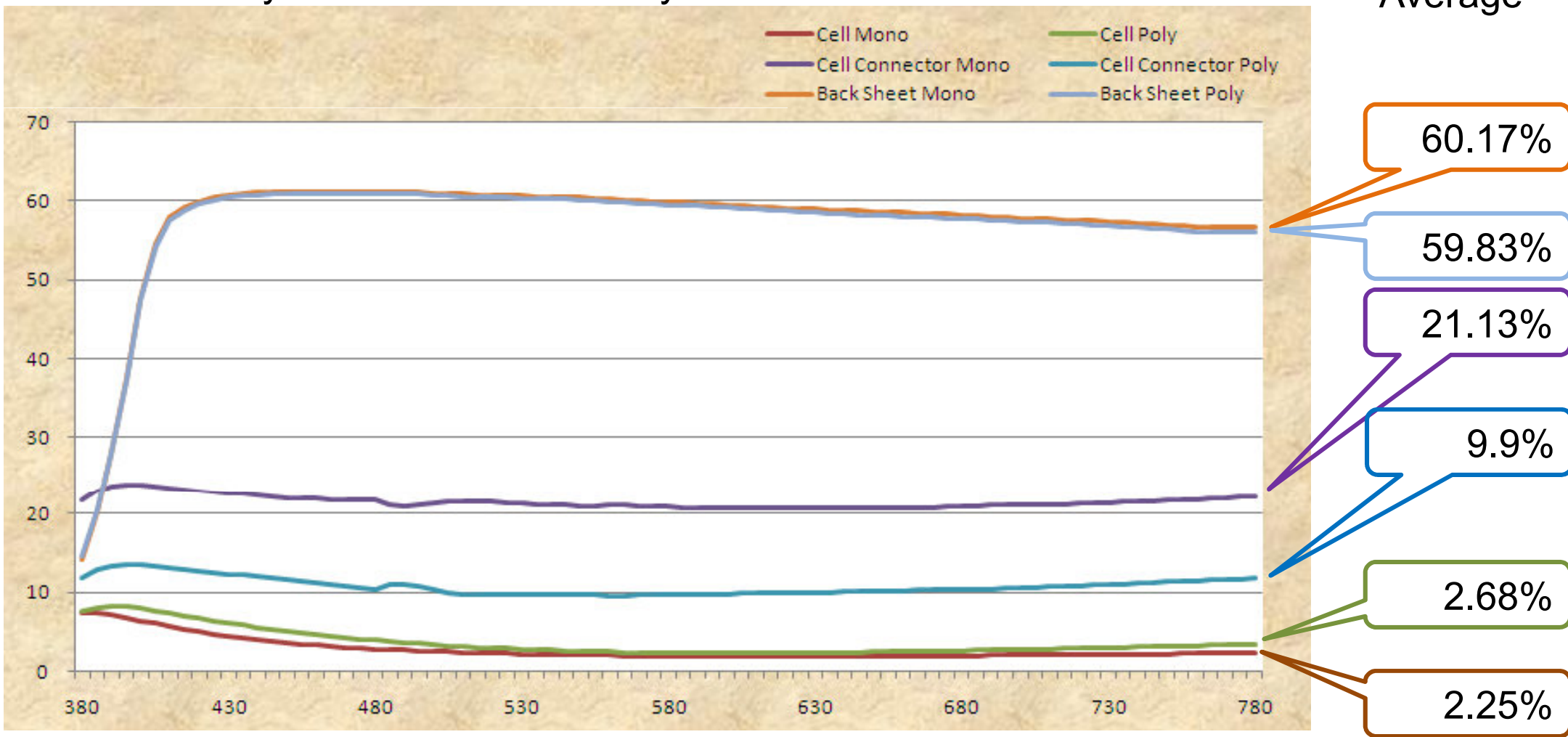
Reflectivity curves of coating & un-coating Modules

Average



Module's Reflectivity Analysis

Reflectivity curves of Mono & Poly Modules



JA SOLAR

THANK YOU !

Protect the one Earth we all share, for this and future generations.

Headquarters

JA Solar Holdings Co., Ltd.
No.36, Jiang Chang San Road, Zhabei,
Shanghai 200436, China
Tel: +86 (21) 6095 5888 / 6095 5999
Fax: +86 (21) 6095 5858 / 6095 5959
Email: sales@jasolar.com; market@jasolar.com

Germany

JA Solar GmbH
Walter Gropius Str 17, 80807 Munich, Germany
Tel: +49 (0) 89 327 29890
Fax: +49 (0) 89 327 298929
Email: info.eu@jasolar.com

USA

JA Solar USA. Inc.
Address: 2570 North First Street Suite 360,
San Jose CA 95131
Tel: +1 408 586 0000
Fax: +1 408 956 9505
Email: info.us@jasolar.com

Fengxian Factory

Shanghai JA Solar Technology Co., Ltd.
E6-E8 Plot, Minhang Export Processing Zone,
Feng Xian Shanghai 201401, China
Tel: +86 (21) 3718 1000 / 3718 1111
Fax: +86 (21) 3718 1234

JAPAN

JAソーラー・ジャパン株式会社
地址: 東京都千代田区大手町二丁目6番2号
日本ビル6階614
電話:03-3242-1288
FAX:03-3242-1289