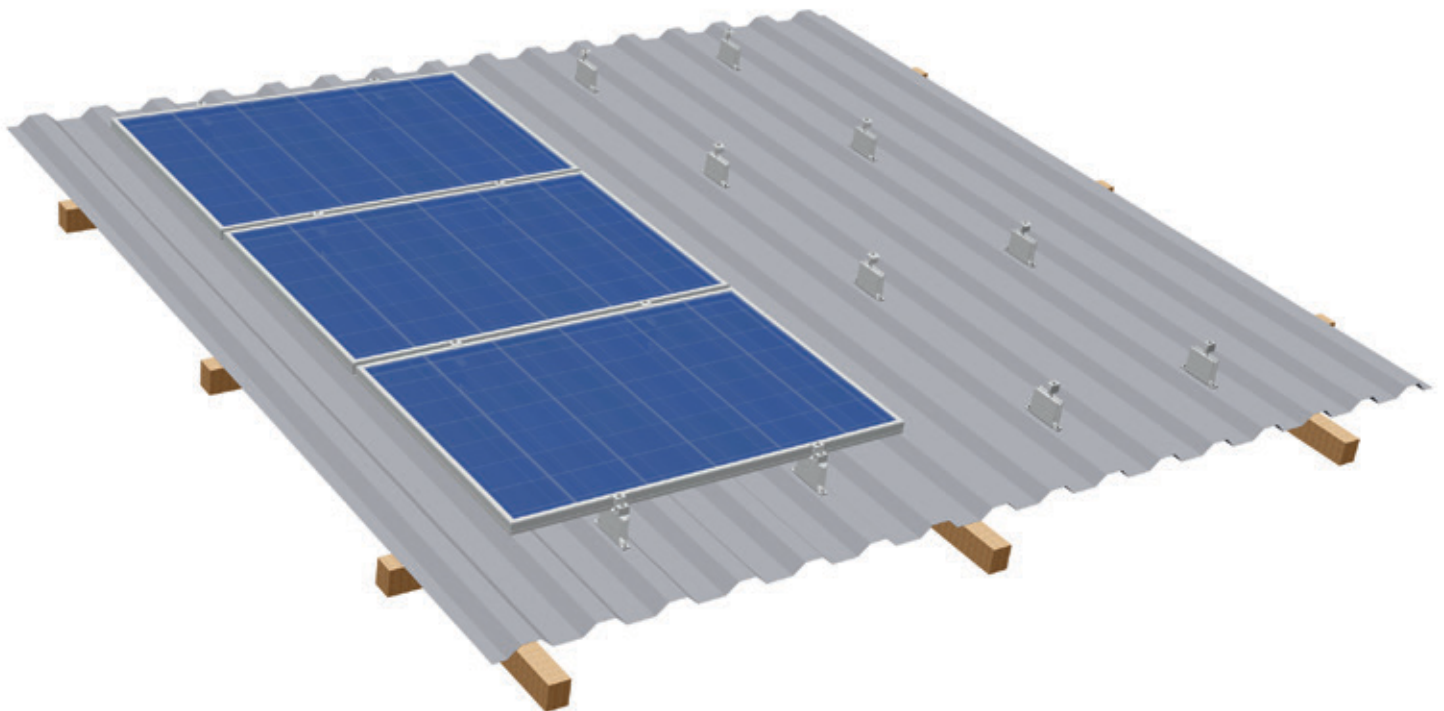




HS RAIL HAWK XL

Longitudinal mounting rail for trapezoidal sheet metal roofs



Save material and logistics costs

All S:FLEX fastening systems for trapezoidal sheet metal roofs combine a reliable roof connection with significantly reduced material usage. This enables you to achieve higher margins for your projects.

Quick and easy installation

The Hawk l=125 mm XL complete high beading rail has a handy length of 125 mm. It is supplied pre-drilled with 2 holes (5 mm) as standard and pre-assembled with EPDM sealing tape.

Do not give away space and optimise yields

When installing with the Hawk high beading rail, no additional expansion joints are required on the roof and maximum use is made of the available surface area. This is because the rail compensates for the thermally induced length compensation. And it also maximises yields. With its height of 100 millimetres, the rail provides significantly better module rear ventilation.

The greater distance to the roof surface not only facilitates cable routing and fastening, but also simplifies the installation of systems with micro-inverters and power optimisers.

HS RAIL HAWK XL

Longitudinal mounting rail for trapezoidal sheet metal roofs

Technical Data

HS rail Hawk
I=125mm XL complete



Mid clamp Hawk HK 30-50 I=40



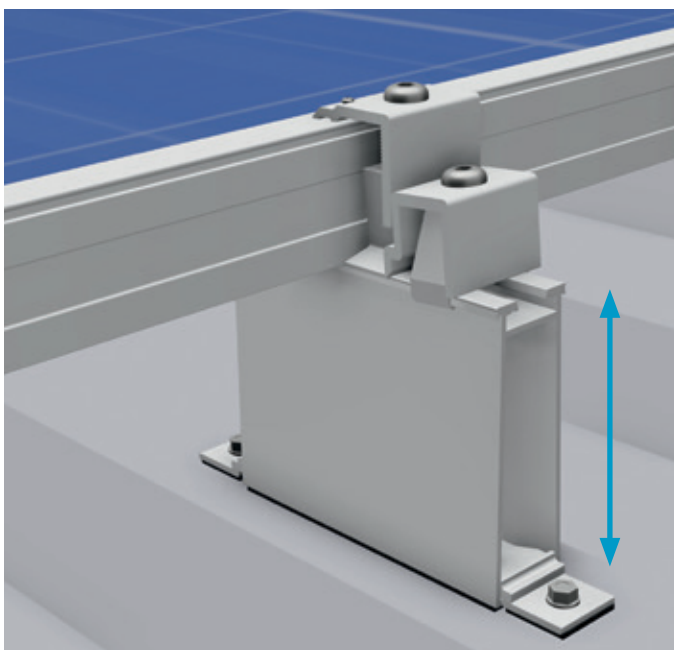
End clamp Hawk HK 30-50 I=40



Sheet metal screw 4,5x25



Application	Trapezoidal sheet metal
Module type	Framed modules
Module orientation	Vertical / horizontal
Distance between modules and roof	100 mm
Module field length	20 m max.
Roof pitch	20°
Max. load	Wind load up to 2.4 kN/m ² Snow load up to 2.4 kN/m ²
Fastening	Sheet metal screws, rivets
Seam spacings	Variable
Earthing of modules	Module clamps with earthing pins
Sheet metal thickness	Sheet steel min. 0.75 mm Aluminium min. 1.0 mm
Material	Aluminium EN AW 6063 / T6, Stainless steel, EPDM seals
Colour	Natural, extruded finish



Rail height 100 mm