

EM330

The EM330 is a Carlo Gavazzi 3 phase meter with indirect measure. This means we need to add an external CT clamps to the installation.

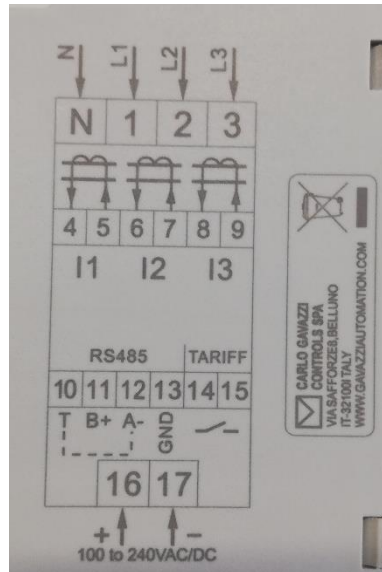


The standard CT clamps included in the Wallbox kit supports up to 250 A. It is possible to order the following options under request:

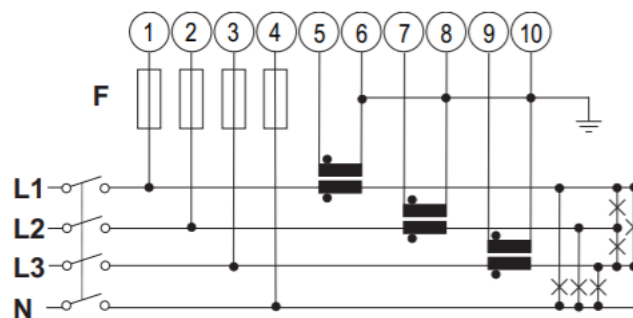
2. Amperage limit	3. Transformer	4. Hole diameter	5. Number of Transformers
250 A	CTA 5 X	24 mm	3
400 A	CTA 6 X	36 mm	3
600 A	CTD-6S	50 mm	3

EM330 – Installation

- The CT clamps are connected into connection pins 4-5,6-7 and 8-9.



- The meter is powered up through pins 16-17, 100-240 V AC/DC
- Three phase voltage should be connected as shown in the upper part of the image above.
- Communication ports are the 10-11-12 pins, refer to Power Boost manual for connection.
- Electrical diagram: Three-phase system current, 4-wire, unbalanced load and three current transformers (TA). 315 mA fuse



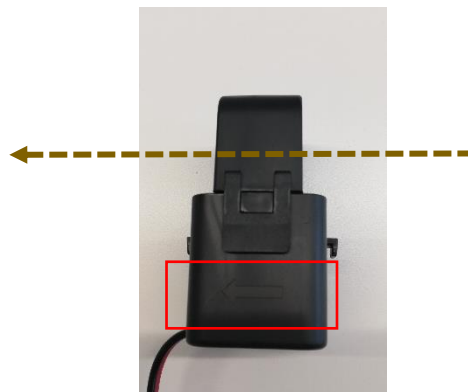
CT clamps installation

- As stated above CT clamps should be connected to pins 4-5,6-7 and 8-9.

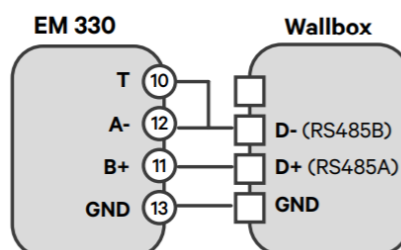
Be aware of connecting red cable to first pin and black to second one. Respect this order on the three CT clamp connections:



- Make sure the cable of the phase measured, goes through the CT clamp from inside the installation to the outside, following the arrow you can appreciate on the following image:



Communication connections pin-out charger-meter



Configuration

The EM330 sold in the Wallbox Power Boost kit is already configured regarding communication purposes, the only configuration needed to be done is the **Current transformer ratio**:

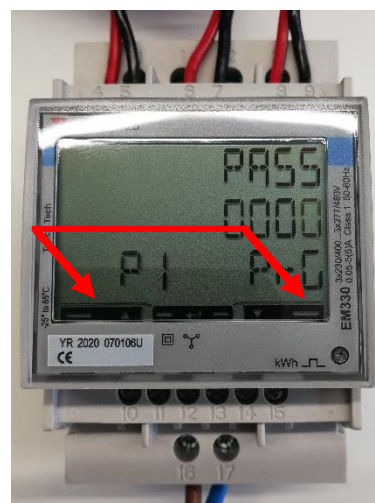
The CT provided in the standard kit are 250/5 A, this means the CT ratio is 50.

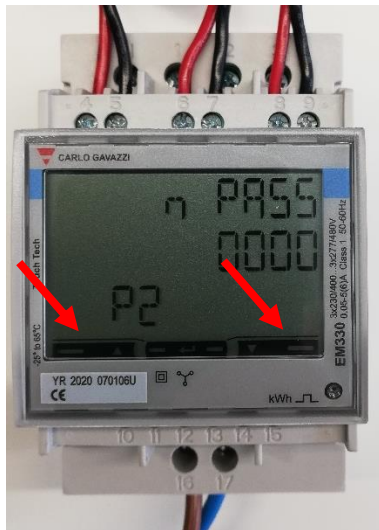
Process



1. Press the middle button for 1.5 seconds. You will enter the password confirmation screen.

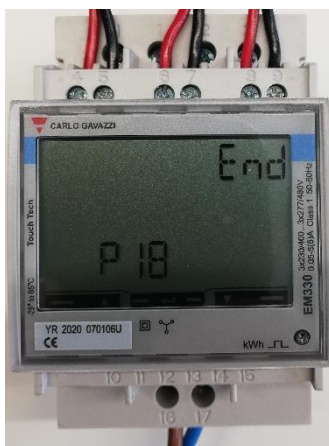
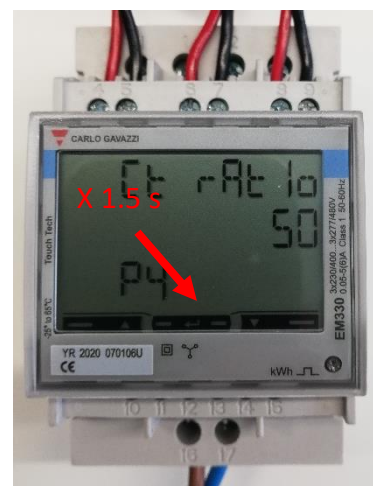
2. The predefined password is 0000, just press que left and right button at the same time to confirm.





3. Once you have access to the menu use the right and left button for scrolling up and down the menu.

4. Scroll up to the “Ct rAt Io” menu. Press the middle button for 1.5 sec, you will be able to modify the value using the left and right buttons. Set it to 50 (only in the case of the standard Wallbox Kit, if not refer to the specifications of the CT clamps). Press the middle button to confirm each value.



5. Scroll down up to the “end” option and press enter to exit programming menu.