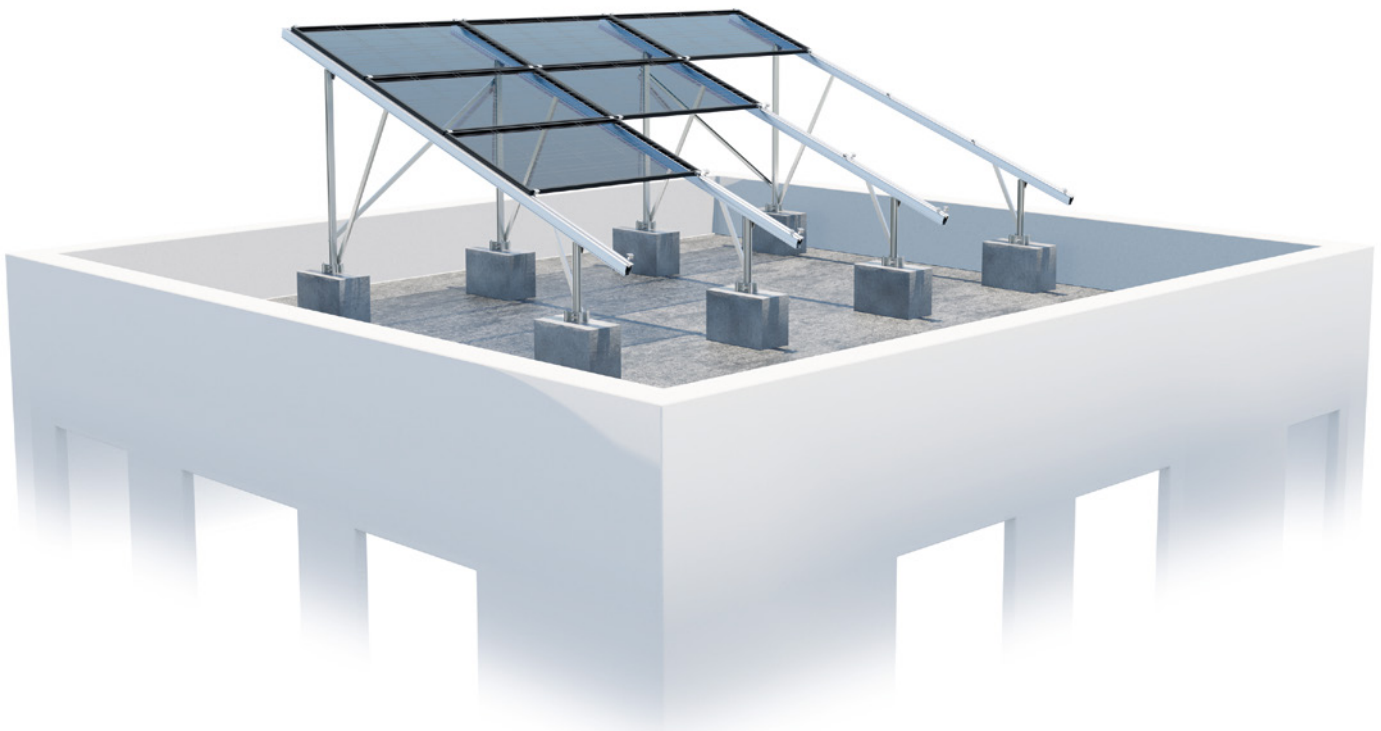




S:FLEX DELTA CONCRETE

For flat roofs and ground-mounted systems
on concrete foundation



Flexible application

The S:FLEX Delta Concrete is designed to be used on flat concrete roofs as well as for ground mount applications. It offers the possibility to build over obstacles. In this way, optimised performance per area can be achieved.

Fast mounting

The lightweight, material-efficient design of the S:FLEX Delta Concrete is a modular and flexible system with few components. No drilling of aluminum or steel is necessary on site. Power optimisers and (micro-)inverters can be easily attached to the structure.

Optimised yield

The excellent rear ventilation of this mounting system ensures high yields and makes it particularly suitable for hot regions.

Simple, customised planning

Thanks to the modular principle, the system can be easily planned for each plant location. Adapted to the existing terrain, the respective wind and snow loads are always taken into account.

Extensive module compatibility

Almost all framed and frameless module types (also bifacial) with common dimensions can be installed either in landscape or portrait mode. The module clamps are available with integrated equipotential bonding.

High service life

All components of the S:FLEX Delta Concrete system are basically made of aluminium and stainless steel. The high corrosion resistance guarantees a maximum service life and offers the possibility of complete recycling.

DELTA CONCRETE

For flat roofs and ground-mounted systems on concrete foundation

Technical Data



Application	Flat roofs and ground-mounted
Foundation	Concrete, screw fastening
Module type	Framed Frameless (additional horizontal rail) Bifacial
Module orientation	Landscape / portrait
Inclination	Up to 20°
Terrain slope	N-S: any E-W: module area 1° / terrain 10°
Maximum module field size	12x4 modules in landscape format 12x3 modules in portrait format
Materials	Aluminium EN-AW-6063 T6
Small parts	Stainless steel A2 70
Lightning protection	Optional
Equipotential bonding	Optional
Colour	Natural, extruded finish
Warranty	10 years on durability of materials

