

Client Name: Shanghai JA Solar Technology Co., Ltd.
Client Address: No 118,Lane 3111,West Huangcheng Road,Fengxian District, 201401 Shanghai,P.R.China.

Sample Name: Mono crystalline silicon photovoltaic (PV) modules
Tested Basic Model No.: JAM66D46-xxx/LB
Client Ref. Information: Please refer to remark (6)

The above sample(s) and information were provided by the client.

SGS Job No.: SHP24-014499
Sample Receiving Date: May 11, 2024
Verification Period: May 11, 2024 ~ Jun 11, 2024
Verification Requested: With reference to RoHS Directive (EU) 2015/863 amending 2011/65/EU.
Verification Method(s): Please refer to next page(s).
Verification Result(s): Please refer to next page(s).

Signed for and on behalf of
SGS-CSTC Standards Technical Services (Shanghai) Co., Ltd.

Jessica Chen

Jessica Chen
Approved Signatory

scan to see the report



322A2349



Unless otherwise agreed in writing, this document is issued by the Company subject to its General Conditions of Service printed overleaf, available on request or accessible at <http://www.sgs.com/en/Terms-and-Conditions.aspx> and, for electronic format documents, subject to Terms and Conditions for Electronic Documents at <http://www.sgs.com/en/Terms-and-Conditions/Terms-e-Document.aspx>. Attention is drawn to the limitation of liability, indemnification and jurisdiction issues defined therein. Any holder of this document is advised that information contained hereon reflects the Company's findings at the time of its intervention only and within the limits of Client's instructions, if any. The Company's sole responsibility is to its Client and this document does not exonerate parties to a transaction from exercising all their rights and obligations under the transaction documents. This document cannot be reproduced except in full, without prior written approval of the Company. Any unauthorized alteration, forgery or falsification of the content or appearance of this document is unlawful and offenders may be prosecuted to the fullest extent of the law. Unless otherwise stated the results shown in this test report refer only to the sample(s) tested.

Attention: To check the authenticity of testing/inspection report & certificate, please contact us at telephone: (86-755) 8307 1443, or email: CN.Doccheck@sgs.com

SGS-CSTC Standards Technical Services (Shanghai) Co., Ltd.
Testing Center - Chemical Laboratory

3rd Building, No. 889 Yishan Road Xuhui District, Shanghai China 200233 t E&E (86-21) 61402553 f E&E (86-21) 64953679 www.sgs.com.cn
中国·上海·徐汇区宜山路889号3号楼 邮编: 200233 t HL (86-21) 61402594 f HL (86-21) 61156899 e sgs.china@sgs.com

Photo of Submitted Sample



Verification Method(s):

1. With reference to IEC 62321-2:2021, disassembly and disjointment were performed for the submitted samples.
2. With reference to IEC 62321-1:2013, tests were performed for the samples indicated by the photos in this report.
 - (1) With reference to IEC 62321-3-1:2013, screening by EDXRF spectroscopy.
 - (2) Wet chemical test method: With reference to IEC 62321-4:2013+A1:2017, IEC62321-5:2013, IEC 62321-7-1:2015, IEC 62321-7-2:2017, IEC 62321-12:2023, IEC 62321-6:2015 and IEC62321-8:2017 , analyzed by ICP-OES,UV-Vis and GC-MS.



Unless otherwise agreed in writing, this document is issued by the Company subject to its General Conditions of Service printed overleaf, available on request or accessible at <http://www.sgs.com/en/Terms-and-Conditions.aspx> and, for electronic format documents, subject to Terms and Conditions for Electronic Documents at <http://www.sgs.com/en/Terms-and-Conditions/Terms-e-Documents.aspx>. Attention is drawn to the limitation of liability, indemnification and jurisdiction issues defined therein. Any holder of this document is advised that information contained hereon reflects the Company's findings at the time of its intervention only and within the limits of Client's instructions, if any. The Company's sole responsibility is to its Client and this document does not exonerate parties to a transaction from exercising all their rights and obligations under the transaction documents. This document cannot be reproduced except in full, without prior written approval of the Company. Any unauthorized alteration, forgery or falsification of the content or appearance of this document is unlawful and offenders may be prosecuted to the fullest extent of the law. Unless otherwise stated the results shown in this test report refer only to the sample(s) tested.

Attention: To check the authenticity of testing /inspection report & certificate, please contact us at telephone: (86-755) 8307 1443, or email: CN.Doccheck@sgs.com

3rd Building, No.889 Yishan Road Xuhui District, Shanghai China 200233 t E&E (86-21) 61402553 f E&E (86-21) 64953679 www.sgs.com.cn
 中国·上海·徐汇区宜山路889号3号楼 邮编: 200233 t HL (86-21) 61402594 f HL (86-21) 61156899 e sgs.china@sgs.com

Verification Part Description:

SN ID	Sample No.	SGS Sample ID	Description
SN1	A1	SHA24-0096127-0001.C001	Colorful solid
SN2	A2	SHA24-0096127-0001.C002	Silvery metal
SN3	A3	SHA24-0096127-0001.C003	Silvery metal
SN4	A4	SHA24-0096127-0001.C004	Colorful adhesive plastic
SN5	A5	SHA24-0096127-0001.C005	White plastic
SN6	A6	SHA24-0096127-0001.C006	Black plastic
SN7	A7	SHA24-0096127-0001.C007	White adhesive
SN8	A8	SHA24-0096127-0001.C008	Black plastic
SN9	A9	SHA24-0096127-0001.C009	Silvery metal
SN10	A10	SHA24-0096127-0001.C010	Black IC (body)
SN11	A11	SHA24-0096127-0001.C011	Black plastic
SN12	A12	SHA24-0096127-0001.C012	Black rubber
SN13	A13	SHA24-0096127-0001.C013	Black plastic
SN14	A14	SHA24-0096127-0001.C014	Black plastic
SN15	A15	SHA24-0096127-0001.C015	Silvery metal
SN16	A16	SHA24-0096127-0001.C016	Silvery metal
SN17	A17	SHA24-0096127-0001.C017	Red rubber
SN18	A18	SHA24-0096127-0001.C018	Black plastic
SN19	A19	SHA24-0096127-0001.C019	Yellow plastic
SN20	A20	SHA24-0096127-0001.C020	Black plastic
SN21	A21	SHA24-0096127-0001.C021	Black plastic
SN22	A22	SHA24-0096127-0001.C022	Black plastic
SN23	A23	SHA24-0096127-0001.C023	Silvery metal
SN24	A24	SHA24-0096127-0001.C024	Black plastic
SN25	A25	SHA24-0096127-0001.C025	Silvery metal
SN26	A26	SHA24-0096127-0001.C026	Colorful adhesive plastic
SN27	A27	SHA24-0096127-0001.C027	White/Black adhesive plastic
SN28	A28	SHA24-0096127-0001.C028	Transparent plastic
SN29	A29	SHA24-0096127-0001.C029	White plastic
SN30	A30	SHA24-0096127-0001.C030	Black plastic
SN31	A31	SHA24-0096127-0001.C031	Black plastic
SN32	A32	SHA24-0096127-0001.C032	Black plastic
SN33	A33	SHA24-0096127-0001.C033	Brown rubber
SN34	A34	SHA24-0096127-0001.C034	Black plastic
SN35	A35	SHA24-0096127-0001.C035	Brown rubber
SN36	A36	SHA24-0096127-0001.C036	Silvery metal
SN37	A37	SHA24-0096127-0001.C037	Brown rubber
SN38	A38	SHA24-0096127-0001.C038	Silvery metal (soldering strip)
SN39	A39	SHA24-0096127-0001.C039	Silvery metal



Unless otherwise agreed in writing, this document is issued by the Company subject to its General Conditions of Service printed overleaf, available on request or accessible at <http://www.sgs.com/en/Terms-and-Conditions.aspx> and, for electronic format documents, subject to Terms and Conditions for Electronic Documents at <http://www.sgs.com/en/Terms-and-Conditions/Terms-e-Documents.aspx>. Attention is drawn to the limitation of liability, indemnification and jurisdiction issues defined therein. Any holder of this document is advised that information contained hereon reflects the Company's findings at the time of its intervention only and within the limits of Client's instructions, if any. The Company's sole responsibility is to its Client and this document does not exonerate parties to a transaction from exercising all their rights and obligations under the transaction documents. This document cannot be reproduced except in full, without prior written approval of the Company. Any unauthorized alteration, forgery or falsification of the content or appearance of this document is unlawful and offenders may be prosecuted to the fullest extent of the law. Unless otherwise stated the results shown in this test report refer only to the sample(s) tested.

Attention: To check the authenticity of testing /inspection report & certificate, please contact us at telephone: (86-755) 8307 1443, or email: CN.Doccheck@sgs.com

3rd Building, No.889 Yishan Road Xuhui District, Shanghai China 200233 t E&E (86-21) 61402553 f E&E (86-21) 64953679 www.sgsgroup.com.cn
 中国·上海·徐汇区宜山路889号3号楼 邮编: 200233 t HL (86-21) 61402594 f HL (86-21) 61156899 e sgs.china@sgs.com

Verification Result(s):

In accordance with the result of material risk assessment, the following disjointed parts in the submitted sample have been verified. (Unless otherwise specified, the unit is mg/kg).

Test Item(s)	A1	A2	A3	A4	A5	A6	A7	A8
Pb	BL	BL	BL	BL	BL	BL	BL	BL
Hg	BL	BL	BL	BL	BL	BL	BL	BL
Cd	BL	BL	BL	BL	BL	BL	BL	BL
Cr(VI)▼	BL	BL	BL	BL	BL	BL	BL	BL
PBB	BL	---	---	BL	BL	BL	BL	BL
PBDE	BL	---	---	BL	BL	BL	BL	BL
DEHP	BL	---	---	BL	BL	BL	BL	BL
BBP	BL	---	---	BL	BL	BL	BL	BL
DBP	BL	---	---	BL	BL	BL	BL	BL
DIBP	BL	---	---	BL	BL	BL	BL	BL

Test Item(s)	A9	A10	A11	A12	A13	A14	A15	A16
Pb	183049	BL	BL	BL	BL	BL	BL	BL
Hg	BL	BL	BL	BL	BL	BL	BL	BL
Cd	BL	BL	BL	BL	BL	BL	BL	BL
Cr(VI)▼	BL	BL	BL	BL	BL	BL	ND	ND
PBB	---	BL	BL	BL	BL	BL	---	---
PBDE	---	BL	BL	BL	BL	BL	---	---
DEHP	---	BL	BL	BL	BL	BL	---	---
BBP	---	BL	BL	BL	BL	BL	---	---
DBP	---	BL	BL	BL	BL	BL	---	---
DIBP	---	BL	BL	BL	BL	BL	---	---

Test Item(s)	A17	A18	A19	A20	A21	A22	A23	A24
Pb	BL	BL	BL	BL	BL	BL	BL	BL
Hg	BL	BL	BL	BL	BL	BL	BL	BL
Cd	BL	BL	BL	BL	BL	BL	BL	BL
Cr(VI)▼	BL	BL	BL	BL	BL	BL	BL	BL
PBB	BL	BL	BL	BL	BL	BL	---	BL
PBDE	BL	BL	BL	BL	BL	BL	---	BL
DEHP	BL	BL	BL	BL	BL	BL	---	BL
BBP	BL	BL	BL	BL	BL	BL	---	BL
DBP	BL	BL	BL	BL	BL	BL	---	BL
DIBP	BL	BL	BL	BL	BL	BL	---	BL

Test Item(s)	A25	A26	A27	A28	A29	A30	A31	A32
Pb	BL	BL	BL	BL	BL	BL	BL	BL
Hg	BL	BL	BL	BL	BL	BL	BL	BL
Cd	BL	BL	BL	BL	BL	BL	BL	BL
Cr(VI)▼	BL	BL	BL	BL	BL	BL	BL	BL
PBB	---	BL	BL	BL	BL	BL	BL	BL
PBDE	---	BL	BL	BL	BL	BL	BL	BL
DEHP	---	BL	BL	BL	BL	BL	BL	BL



Unless otherwise agreed in writing, this document is issued by the Company subject to its General Conditions of Service printed overleaf, available on request or accessible at <http://www.sgs.com/en/Terms-and-Conditions.aspx> and, for electronic format documents, subject to Terms and Conditions for Electronic Documents at <http://www.sgs.com/en/Terms-and-Conditions/Terms-e-Documents.aspx>. Attention is drawn to the limitation of liability, indemnification and jurisdiction issues defined therein. Any holder of this document is advised that information contained herein reflects the Company's findings at the time of its intervention only and within the limits of Client's instructions, if any. The Company's sole responsibility is to its Client and this document does not exonerate parties to a transaction from exercising all their rights and obligations under the transaction documents. This document cannot be reproduced except in full, without prior written approval of the Company. Any unauthorized alteration, forgery or falsification of the content or appearance of this document is unlawful and offenders may be prosecuted to the fullest extent of the law. Unless otherwise stated the results shown in this test report refer only to the sample(s) tested.

Attention: To check the authenticity of testing /inspection report & certificate, please contact us at telephone: (86-755) 8307 1443, or email: CN.Doccheck@sgs.com

SGS-CSTC Standards Technical Services (Shanghai) Co., Ltd. 3rd Building, No. 889 Yishan Road Xuhui District, Shanghai China 200233 t E&E (86-21) 61402553 f E&E (86-21) 64953679 www.sgsgroup.com.cn
 中国·上海·徐汇区宜山路889号3号楼 邮编: 200233 t HL (86-21) 61402594 f HL (86-21) 61156899 e sgs.china@sgs.com

Test Item(s)	A25	A26	A27	A28	A29	A30	A31	A32
BBP	---	BL	BL	BL	BL	BL	BL	BL
DBP	---	BL	BL	BL	BL	BL	BL	BL
DIBP	---	BL	BL	BL	BL	BL	BL	BL

Test Item(s)	A33	A34	A35	A36	A37	A38	A39
Pb	BL	BL	BL	BL	BL	120338	70987
Hg	BL	BL	BL	BL	BL	BL	BL
Cd	BL	BL	BL	BL	BL	BL	BL
Cr(VI)▼	BL	BL	BL	BL	BL	BL	BL
PBB	BL	BL	BL	---	BL	---	---
PBDE	BL	BL	BL	---	BL	---	---
DEHP	BL	BL	BL	---	BL	---	---
BBP	BL	BL	BL	---	BL	---	---
DBP	BL	BL	BL	---	BL	---	---
DIBP	BL	BL	BL	---	BL	---	---



Unless otherwise agreed in writing, this document is issued by the Company subject to its General Conditions of Service printed overleaf, available on request or accessible at <http://www.sgs.com/en/Terms-and-Conditions.aspx> and, for electronic format documents, subject to Terms and Conditions for Electronic Documents at <http://www.sgs.com/en/Terms-and-Conditions/Terms-e-Documents.aspx>. Attention is drawn to the limitation of liability, indemnification and jurisdiction issues defined therein. Any holder of this document is advised that information contained hereon reflects the Company's findings at the time of its intervention only and within the limits of Client's instructions, if any. The Company's sole responsibility is to its Client and this document does not exonerate parties to a transaction from exercising all their rights and obligations under the transaction documents. This document cannot be reproduced except in full, without prior written approval of the Company. Any unauthorized alteration, forgery or falsification of the content or appearance of this document is unlawful and offenders may be prosecuted to the fullest extent of the law. Unless otherwise stated the results shown in this test report refer only to the sample(s) tested.

Attention: To check the authenticity of testing / inspection report & certificate, please contact us at telephone: (86-755) 8307 1443, or email: CN.Doccheck@sgs.com

SGS-CSTC Standards Technical Services (Shanghai) Co., Ltd. 3rd Building, No. 889 Yishan Road Xuhui District, Shanghai China 200233 t E&E (86-21) 61402553 f E&E (86-21) 64953679 www.sgsgroup.com.cn
 中国·上海·徐汇区宜山路889号3号楼 邮编: 200233 t HL (86-21) 61402594 f HL (86-21) 61156899 e sgs.china@sgs.com

Notes:

- (1) Interpretation of screening results by X-ray fluorescence spectrometry (XRF):
 (a) Screening limits in mg/kg for regulated elements in various matrices according to IEC 62321-1:2013 Annex A as below table.

Element	Polymers	Metals	Composite Materials
Cd	$BL \leq (70-3\sigma) < X < (130+3\sigma) \leq OL$	$BL \leq (70-3\sigma) < X < (130+3\sigma) \leq OL$	$LOD < X < (150+3\sigma) \leq OL$
Pb	$BL \leq (700-3\sigma) < X < (1300+3\sigma) \leq OL$	$BL \leq (700-3\sigma) < X < (1300+3\sigma) \leq OL$	$BL \leq (500-3\sigma) < X < (1500+3\sigma) \leq OL$
Hg	$BL \leq (700-3\sigma) < X < (1300+3\sigma) \leq OL$	$BL \leq (700-3\sigma) < X < (1300+3\sigma) \leq OL$	$BL \leq (500-3\sigma) < X < (1500+3\sigma) \leq OL$
Br	$BL \leq (300-3\sigma) < X$	Not applicable	$BL \leq (250-3\sigma) < X$
Cr	$BL \leq (700-3\sigma) < X$	$BL \leq (700-3\sigma) < X$	$BL \leq (500-3\sigma) < X$

- (b) If the maximum allowed level restricts PBB/PBDE and Cr(VI) rather than Br and Cr, the exceptions are the XRF determinations of Br and Cr. If the quantitative results for the elements Br and/or Cr are higher than the limit (for Br calculated based on the stoichiometry of Br in the most common congeners of PBB/PBDE), the sample is "inconclusive".
- (c) Results are obtained by EDXRF for primary screening, LOD = Limit of Detection, BL = Below Limit, OL= Over Limit, IN (The symbol X marks the region)=Inconclusive, where further investigation is necessary, and further chemical testing by ICP-OES (for Cd, Pb, Hg), UV-Vis (for Cr(VI)) and GC-MS (for PBB/PBDE) are recommended to be performed.
- (d) The EDXRF screening test for elements – The reading may be different to the actual content in the sample be of non-uniformity composition.
- (2) Screening results of Phthalates (PHTH) below the limits are shown as "BL". Further chemical testing by GC-MS is to be performed if the results exceed limits.

Test Items	CAS No.
Bis(2-ethylhexyl) phthalate (DEHP)	117-81-7
Butyl benzyl phthalate (BBP)	85-68-7
Dibutyl phthalate (DBP)	84-74-2
Diisobutyl phthalate (DIBP)	84-69-5

- (3) Interpretation of results by chemical tests:
 (a) mg/kg = 0.0001%, MDL=Method detection Limit, ND = Not Detected (<MDL), --- = Not Applicable.
 (b) Unit and MDL in wet chemical test

Test Items	Pb	Hg	Cd	DEHP	BBP	DBP	DIBP
Unit	mg/kg	mg/kg	mg/kg	mg/kg	mg/kg	mg/kg	mg/kg
MDL	10	10	10	100	100	100	100

The MDL for single compound of PBB and PBDE is 100 mg/kg,
 MDL of Cr(VI) for polymer, composite and leather sample is 10 mg/kg.
 MDL of Cr(VI) for metal sample is 0.10 µg/cm².

- (c) ▼ =Metal sample
- The sample is positive for Cr(VI) if the Cr(VI) concentration is greater than 0.13 µg/cm². The sample coating is considered to contain Cr(VI).
 - The sample is negative for Cr(VI) if Cr(VI) is ND (concentration less than 0.10 µg/cm²). The coating is considered a non-Cr(VI) based coating
 - The result between 0.10 µg/cm² and 0.13 µg/cm² is considered to be inconclusive-unavoidable coating variations may influence the determination

Information on storage conditions and production date of the tested sample is unavailable and thus



Unless otherwise agreed in writing, this document is issued by the Company subject to its General Conditions of Service printed overleaf, available on request or accessible at <http://www.sgs.com/en/Terms-and-Conditions.aspx> and, for electronic format documents, subject to Terms and Conditions for Electronic Documents at <http://www.sgs.com/en/Terms-and-Conditions/Terms-e-Documents.aspx>. Attention is drawn to the limitation of liability, indemnification and jurisdiction issues defined therein. Any holder of this document is advised that information contained hereon reflects the Company's findings at the time of its intervention only and within the limits of Client's instructions, if any. The Company's sole responsibility is to its Client and this document does not exonerate parties to a transaction from exercising all their rights and obligations under the transaction documents. This document cannot be reproduced except in full, without prior written approval of the Company. Any unauthorized alteration, forgery or falsification of the content or appearance of this document is unlawful and offenders may be prosecuted to the fullest extent of the law. Unless otherwise stated the results shown in this test report refer only to the sample(s) tested.

Attention: To check the authenticity of testing /inspection report & certificate, please contact us at telephone: (86-755) 8307 1443, or email: CN.Doccheck@sgs.com

3rd Building, No.889 Yishan Road Xuhui District, Shanghai China 200233 t E&E (86-21) 61402553 f E&E (86-21) 64953679 www.sgsgroup.com.cn
 中国·上海·徐汇区宜山路889号3号楼 邮编: 200233 t HL (86-21) 61402594 f HL (86-21) 61156899 e sgs.china@sgs.com

Cr(VI) results represent status of the sample at the time of testing.

- (4) Restricted substances and maximum concentration values tolerated by weight in homogeneous materials under RoHS Directive: Cd: 0.01%, Pb/Hg/Cr(VI)/PBB/PBDE/DEHP/BBP/DBP/DIBP: 0.1%. The limit is quoted from RoHS Directive (EU) 2015/863.
- (5) IEC 62321 series is equivalent to EN 62321 series.

Unless otherwise stated, the decision rule for conformity reporting is based on Binary Statement for Simple Acceptance Rule ($w=0$) stated in ILAC-G8:09/2019.



SGS-CSTC Standards Technical Services (Shanghai) Co., Ltd.
Testing Center-Chemical Laboratory

Unless otherwise agreed in writing, this document is issued by the Company subject to its General Conditions of Service printed overleaf, available on request or accessible at <http://www.sgs.com/en/Terms-and-Conditions.aspx> and, for electronic format documents, subject to Terms and Conditions for Electronic Documents at <http://www.sgs.com/en/Terms-and-Conditions/Terms-e-Documents.aspx>. Attention is drawn to the limitation of liability, indemnification and jurisdiction issues defined therein. Any holder of this document is advised that information contained hereon reflects the Company's findings at the time of its intervention only and within the limits of Client's instructions, if any. The Company's sole responsibility is to its Client and this document does not exonerate parties to a transaction from exercising all their rights and obligations under the transaction documents. This document cannot be reproduced except in full, without prior written approval of the Company. Any unauthorized alteration, forgery or falsification of the content or appearance of this document is unlawful and offenders may be prosecuted to the fullest extent of the law. Unless otherwise stated the results shown in this test report refer only to the sample(s) tested.

Attention: To check the authenticity of testing /inspection report & certificate, please contact us at telephone: (86-755) 8307 1443, or email: CN.Doccheck@sgs.com

3rd Building, No. 889 Yishan Road Xuhui District, Shanghai China 200233 t E&E (86-21) 61402553 f E&E (86-21) 64953679 www.sgsgroup.com.cn
中国·上海·徐汇区宜山路889号3号楼 邮编: 200233 t HL (86-21) 61402594 f HL (86-21) 61156899 e sgs.china@sgs.com

Attachment:

(6) Client Ref. Information:

JAM72D40-xxx/HB,xxx means STC output, xxx= 580 to 620 in step of 5

JAM54D40-xxx/HB,xxx means STC output, xxx= 430 to 465 in step of 5

JAM54D41-xxx/HB,xxx means STC output, xxx= 425 to 465 in step of 5

Maximum System Voltage: 1500 V

JAM66D46-680/LB, JAM66D46-685/LB, JAM66D46-690/LB, JAM66D46-695/LB,
JAM66D46-700/LB, JAM66D46-705/LB, JAM66D46-710/LB, JAM66D46-715/LB,
JAM66D46-720/LB, JAM66D46-725/LB, JAM66D46-730/LB

JAM60D46-610/LB, JAM60D46-615/LB, JAM60D46-620/LB, JAM60D46-625/LB,
JAM60D46-630/LB, JAM60D46-635/LB, JAM60D46-640/LB, JAM60D46-645/LB,
JAM60D46-650/LB, JAM60D46-655/LB, JAM60D46-660/LB, JAM60D46-665/LB

JAM66D45-590/LB, JAM66D45-595/LB, JAM66D45-600/LB, JAM66D45-605/LB,
JAM66D45-610/LB, JAM66D45-615/LB, JAM66D45-620/LB, JAM66D45-625/LB

JAM60D45-535/LB, JAM60D45-540/LB, JAM60D45-545/LB, JAM60D45-550/LB,
JAM60D45-555/LB, JAM60D45-560/LB, JAM60D45-565/LB, JAM60D45-570/LB

JAM54D45-480/LB, JAM54D45-485/LB, JAM54D45-490/LB, JAM54D45-495/LB,
JAM54D45-500/LB, JAM54D45-505/LB, JAM54D45-510/LB, JAM54D45-515/LB

JAM48D45-430/LB, JAM48D45-435/LB, JAM48D45-440/LB, JAM48D45-445/LB,
JAM48D45-450/LB, JAM48D45-455/LB, JAM48D45-460/LB

JAM72D42-605/LB, JAM72D42-610/LB, JAM72D42-615/LB, JAM72D42-620/LB,
JAM72D42-625/LB, JAM72D42-630/LB, JAM72D42-635/LB, JAM72D42-640/LB,
JAM72D42-645/LB, JAM72D42-650/LB

JAM66D42-540/MB, JAM66D42-545/MB, JAM66D42-550/MB, JAM66D42-555/MB,
JAM66D42-560/MB, JAM66D42-565/MB, JAM66D42-570/MB, JAM66D42-575/MB,
JAM66D42-580/MB, JAM66D42-585/MB, JAM66D42-590/MB, JAM66D42-595/MB,
JAM66D42-600/MB

JAM60D42-495/LB, JAM60D42-500/LB, JAM60D42-505/LB, JAM60D42-510/LB,
JAM60D42-515/LB, JAM60D42-520/LB, JAM60D42-525/LB, JAM60D42-530/LB,



Unless otherwise agreed in writing, this document is issued by the Company subject to its General Conditions of Service printed overleaf, available on request or accessible at <http://www.sgs.com/en/Terms-and-Conditions.aspx> and, for electronic format documents, subject to Terms and Conditions for Electronic Documents at <http://www.sgs.com/en/Terms-and-Conditions/Terms-e-Documents.aspx>. Attention is drawn to the limitation of liability, indemnification and jurisdiction issues defined therein. Any holder of this document is advised that information contained hereon reflects the Company's findings at the time of its intervention only and within the limits of Client's instructions, if any. The Company's sole responsibility is to its Client and this document does not exonerate parties to a transaction from exercising all their rights and obligations under the transaction documents. This document cannot be reproduced except in full, without prior written approval of the Company. Any unauthorized alteration, forgery or falsification of the content or appearance of this document is unlawful and offenders may be prosecuted to the fullest extent of the law. Unless otherwise stated the results shown in this test report refer only to the sample(s) tested.

Attention: To check the authenticity of testing / inspection report & certificate, please contact us at telephone: (86-755) 8307 1443, or email: CN.Doccheck@sgs.com

SGS-CSTC (Shanghai) Co., Ltd.
Testing Center-Chemical Industry

3rd Building, No.889 Yishan Road Xuhui District, Shanghai China 200233 t E&E (86-21) 61402553 f E&E (86-21) 64953679 www.sgsgroup.com.cn
中国·上海·徐汇区宜山路889号3号楼 邮编: 200233 t HL (86-21) 61402594 f HL (86-21) 61156899 e sgs.china@sgs.com

JAM60D42-535/LB, JAM60D42-540/LB, JAM60D42-545/LB

JAM54D42-450/LB, JAM54D42-455/LB, JAM54D42-460/LB, JAM54D42-465/LB,
JAM54D42-470/LB, JAM54D42-475/LB, JAM54D42-480/LB, JAM54D42-485/LB,
JAM54D42-490/LB

JAM60D43-495/LB, JAM60D43-500/LB, JAM60D43-505/LB, JAM60D43-510/LB,
JAM60D43-515/LB, JAM60D43-520/LB, JAM60D43-525/LB, JAM60D43-530/LB,
JAM60D43-535/LB, JAM60D43-540/LB, JAM60D43-545/LB

JAM54D43-450/LB, JAM54D43-455/LB, JAM54D43-460/LB, JAM54D43-465/LB,
JAM54D43-470/LB, JAM54D43-475/LB, JAM54D43-480/LB, JAM54D43-485/LB,
JAM54D43-490/LB

JAM72D40-580/LB, JAM72D40-585/LB, JAM72D40-590/LB, JAM72D40-595/LB,
JAM72D40-600/LB, JAM72D40-605/LB, JAM72D40-610/LB

JAM60D40-470/LB, JAM60D40-475/LB, JAM60D40-480/LB, JAM60D40-485/LB,
JAM60D40-490/LB, JAM60D40-495/LB, JAM60D40-500/LB, JAM60D40-505/LB,
JAM60D40-510/LB

JAM54D40-430/LB, JAM54D40-435/LB, JAM54D40-440/LB, JAM54D40-445/LB,
JAM54D40-450/LB, JAM54D40-455/LB, JAM54D40-460/LB, JAM54D40-465/LB

JAM60D41-470/LB, JAM60D41-475/LB, JAM60D41-480/LB, JAM60D41-485/LB,
JAM60D41-490/LB, JAM60D41-495/LB, JAM60D41-500/LB, JAM60D41-505/LB,
JAM60D41-510/LB

JAM54D41-425/LB, JAM54D41-430/LB, JAM54D41-435/LB, JAM54D41-440/LB,
JAM54D41-445/LB, JAM54D41-450/LB, JAM54D41-455/LB, JAM54D41-460/LB

JAM78D40-610/MB, JAM78D40-615/MB, JAM78D40-620/MB, JAM78D40-625/MB,
JAM78D40-630/MB, JAM78D40-635/MB, JAM78D40-640/MB, JAM78D40-645/MB,
JAM78D40-650/MB

JAM72D40-560/MB, JAM72D40-565/MB, JAM72D40-570/MB, JAM72D40-575/MB,
JAM72D40-580/MB, JAM72D40-585/MB, JAM72D40-590/MB, JAM72D40-595/MB,
JAM72D40-600/MB

JAM66D40-500/MB, JAM66D40-505/MB, JAM66D40-510/MB, JAM66D40-515/MB,
JAM66D40-520/MB, JAM66D40-525/MB, JAM66D40-530/MB, JAM66D40-535/MB,
JAM66D40-540/MB, JAM66D40-545/MB, JAM66D40-550/MB

JAM60D40-455/MB, JAM60D40-460/MB, JAM60D40-465/MB, JAM60D40-470/MB,
JAM60D40-475/MB, JAM60D40-480/MB, JAM60D40-485/MB, JAM60D40-490/MB,
JAM60D40-495/MB, JAM60D40-500/MB

JAM54D40-415/MB, JAM54D40-420/MB, JAM54D40-425/MB, JAM54D40-430/MB,



SGS-CSTC Technical Services (Shanghai) Co., Ltd.
Testing Center - Chemical Services

Unless otherwise agreed in writing, this document is issued by the Company subject to its General Conditions of Service printed overleaf, available on request or accessible at <http://www.sgs.com/en/Terms-and-Conditions.aspx> and, for electronic format documents, subject to Terms and Conditions for Electronic Documents at <http://www.sgs.com/en/Terms-and-Conditions/Terms-e-Documents.aspx>. Attention is drawn to the limitation of liability, indemnification and jurisdiction issues defined therein. Any holder of this document is advised that information contained hereon reflects the Company's findings at the time of its intervention only and within the limits of Client's instructions, if any. The Company's sole responsibility is to its Client and this document does not exonerate parties to a transaction from exercising all their rights and obligations under the transaction documents. This document cannot be reproduced except in full, without prior written approval of the Company. Any unauthorized alteration, forgery or falsification of the content or appearance of this document is unlawful and offenders may be prosecuted to the fullest extent of the law. Unless otherwise stated the results shown in this test report refer only to the sample(s) tested.

Attention: To check the authenticity of testing / inspection report & certificate, please contact us at telephone: (86-755) 8307 1443, or email: CN.Doccheck@sgs.com

3rd Building, No. 889 Yishan Road Xuhui District, Shanghai China 200233 t E&E (86-21) 61402553 f E&E (86-21) 64953679 www.sgsgroup.com.cn
中国·上海·徐汇区宜山路889号3号楼 邮编: 200233 t HL (86-21) 61402594 f HL (86-21) 61156899 e sgs.china@sgs.com

JAM54D40-435/MB, JAM54D40-440/MB, JAM54D40-445/MB, JAM54D40-450/MB

JAM54D41-415/MB, JAM54D41-420/MB, JAM54D41-425/MB, JAM54D41-430/MB, JAM54D41-435/MB, JAM54D41-440/MB, JAM54D41-445/MB, JAM54D41-450/MB

JAM78D40-610/GB, JAM78D40-615/GB, JAM78D40-620/GB, JAM78D40-625/GB, JAM78D40-630/GB, JAM78D40-635/GB, JAM78D40-640/GB, JAM78D40-645/GB, JAM78D40-650/GB

JAM72D40-560/GB, JAM72D40-565/GB, JAM72D40-570/GB, JAM72D40-575/GB, JAM72D40-580/GB, JAM72D40-585/GB, JAM72D40-590/GB, JAM72D40-595/GB, JAM72D40-600/GB

JAM66D40-510/GB, JAM66D40-515/GB, JAM66D40-520/GB, JAM66D40-525/GB, JAM66D40-530/GB, JAM66D40-535/GB, JAM66D40-540/GB, JAM66D40-545/GB, JAM66D40-550/GB,

JAM60D40-465/GB, JAM60D40-470/GB, JAM60D40-475/GB, JAM60D40-480/GB, JAM60D40-485/GB, JAM60D40-490/GB, JAM60D40-495/GB, JAM60D40-500/GB

JAM54D40-415/GB, JAM54D40-420/GB, JAM54D40-425/GB, JAM54D40-430/GB, JAM54D40-435/GB, JAM54D40-440/GB, JAM54D40-445/GB, JAM54D40-450/GB

JAM54D41-405/GB, JAM54D41-410/GB, JAM54D41-415/GB, JAM54D41-420/GB, JAM54D41-425/GB, JAM54D41-430/GB, JAM54D41-435/GB, JAM54D41-440/GB, JAM54D41-445/GB, JAM54D41-450/GB

JAM78D49-585/LB, JAM78D49-590/LB, JAM78D49-595/LB, JAM78D49-600/LB, JAM78D49-605/LB, JAM78D49-610/LB, JAM78D49-615/LB, JAM78D49-620/LB, JAM78D49-625/LB

JAM66D46-680/HB, JAM66D46-685/HB, JAM66D46-690/HB, JAM66D46-695/HB, JAM66D46-700/HB, JAM66D46-705/HB, JAM66D46-710/HB, JAM66D46-715/HB, JAM66D46-720/HB, JAM66D46-725/HB, JAM66D46-730/HB

JAM60D46-610/HB, JAM60D46-615/HB, JAM60D46-620/HB, JAM60D46-625/HB, JAM60D46-630/HB, JAM60D46-635/HB, JAM60D46-640/HB, JAM60D46-645/HB, JAM60D46-650/HB, JAM60D46-655/HB, JAM60D46-660/HB, JAM60D46-665/HB

JAM66D47-680/HB, JAM66D47-685/HB, JAM66D47-690/HB, JAM66D47-695/HB, JAM66D47-700/HB, JAM66D47-705/HB, JAM66D47-710/HB, JAM66D47-715/HB, JAM66D47-720/HB, JAM66D47-725/HB, JAM66D47-730/HB

JAM60D47-610/HB, JAM60D47-615/HB, JAM60D47-620/HB, JAM60D47-625/HB, JAM60D47-630/HB, JAM60D47-635/HB, JAM60D47-640/HB, JAM60D47-645/HB, JAM60D47-650/HB, JAM60D47-655/HB, JAM60D47-660/HB, JAM60D47-665/HB

JAM72D40-580/HB, JAM72D40-585/HB, JAM72D40-590/HB, JAM72D40-595/HB, JAM72D40-600/HB, JAM72D40-605/HB, JAM72D40-610/HB, JAM72D40-615/HB, JAM72D40-620/HB



Unless otherwise agreed in writing, this document is issued by the Company subject to its General Conditions of Service printed overleaf, available on request or accessible at <http://www.sgs.com/en/Terms-and-Conditions.aspx> and, for electronic format documents, subject to Terms and Conditions for Electronic Documents at <http://www.sgs.com/en/Terms-and-Conditions/Terms-e-Documents.aspx>. Attention is drawn to the limitation of liability, indemnification and jurisdiction issues defined therein. Any holder of this document is advised that information contained hereon reflects the Company's findings at the time of its intervention only and within the limits of Client's instructions, if any. The Company's sole responsibility is to its Client and this document does not exonerate parties to a transaction from exercising all their rights and obligations under the transaction documents. This document cannot be reproduced except in full, without prior written approval of the Company. Any unauthorized alteration, forgery or falsification of the content or appearance of this document is unlawful and offenders may be prosecuted to the fullest extent of the law. Unless otherwise stated the results shown in this test report refer only to the sample(s) tested.

Attention: To check the authenticity of testing /inspection report & certificate, please contact us at telephone: (86-755) 8307 1443, or email: CN.Doccheck@sgs.com

SGS-CSI Technical Services (Shanghai) Co., Ltd.
Testing Center - China

3rd Building, No. 889 Yishan Road Xuhui District, Shanghai China 200233 t E&E (86-21) 61402553 f E&E (86-21) 64953679 www.sgsgroup.com.cn
中国·上海·徐汇区宜山路889号3号楼 邮编: 200233 t HL (86-21) 61402594 f HL (86-21) 61156899 e sgs.china@sgs.com

JAM54D40-430/HB, JAM54D40-435/HB, JAM54D40-440/HB, JAM54D40-445/HB,
JAM54D40-450/HB, JAM54D40-455/HB, JAM54D40-460/HB, JAM54D40-465/HB

JAM54D41-425/HB, JAM54D41-430/HB, JAM54D41-435/HB, JAM54D41-440/HB,
JAM54D41-445/HB, JAM54D41-450/HB, JAM54D41-455/HB, JAM54D41-460/HB,
JAM54D41-465/HB

JAM48D44-430/LB, JAM48D44-435/LB, JAM48D44-440/LB, JAM48D44-445/LB,
JAM48D44-450/LB, JAM48D44-455/LB, JAM48D44-460/LB

(7) According to the declaration from applicant, the materials of Model "JAM66D46-xxx/LB" are the same as those in Model of remark (6) and its results for support the results of Model in remark (6). The applicant will take the responsibility of all discrepancy and risk.



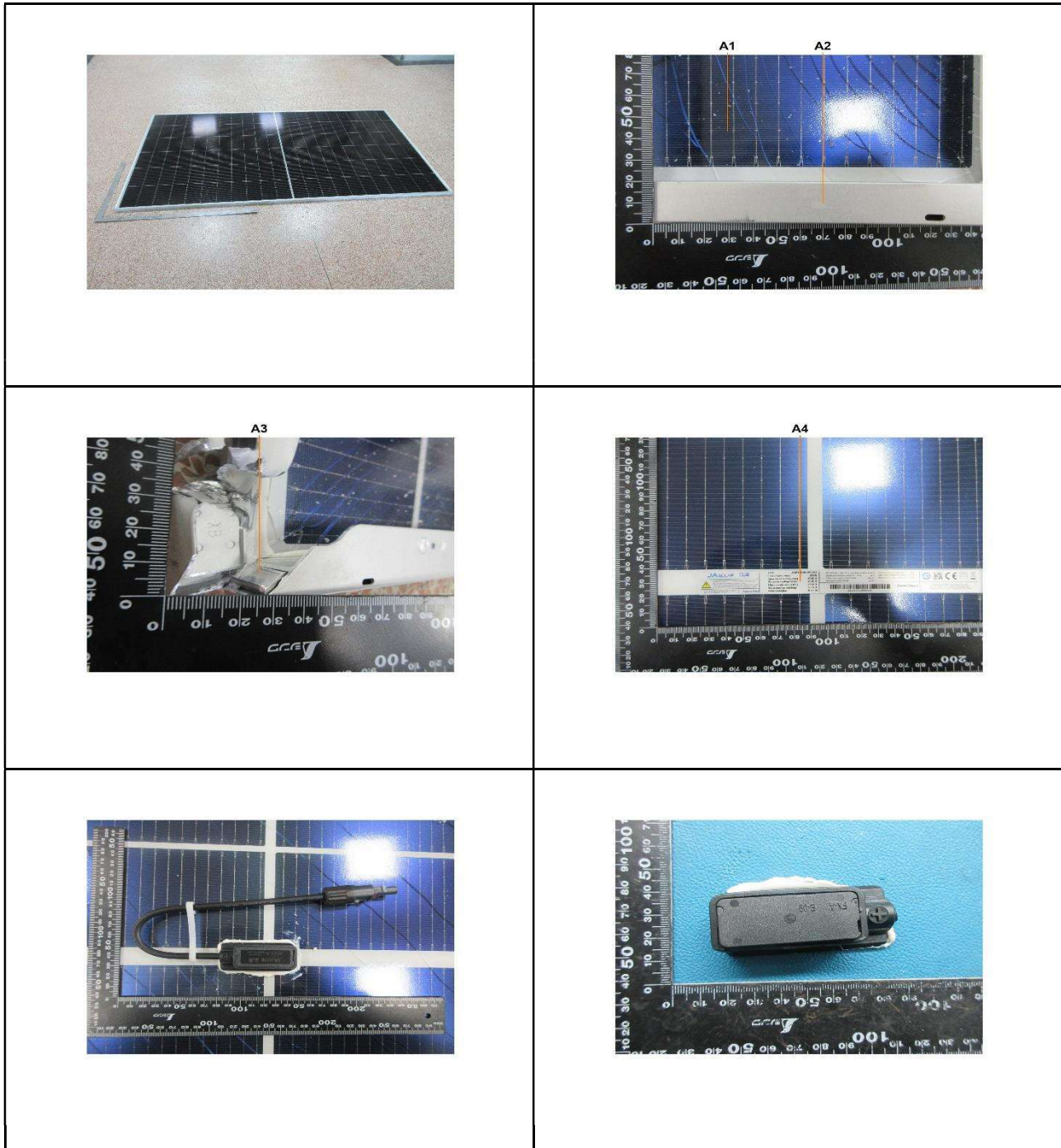
SGS-CSSTC (Shanghai) Technical Services Co., Ltd.
Testing Center-Chemical Laboratory

Unless otherwise agreed in writing, this document is issued by the Company subject to its General Conditions of Service printed overleaf, available on request or accessible at <http://www.sgs.com/en/Terms-and-Conditions.aspx> and, for electronic format documents, subject to Terms and Conditions for Electronic Documents at <http://www.sgs.com/en/Terms-and-Conditions/Terms-e-Documents.aspx>. Attention is drawn to the limitation of liability, indemnification and jurisdiction issues defined therein. Any holder of this document is advised that information contained hereon reflects the Company's findings at the time of its intervention only and within the limits of Client's instructions, if any. The Company's sole responsibility is to its Client and this document does not exonerate parties to a transaction from exercising all their rights and obligations under the transaction documents. This document cannot be reproduced except in full, without prior written approval of the Company. Any unauthorized alteration, forgery or falsification of the content or appearance of this document is unlawful and offenders may be prosecuted to the fullest extent of the law. Unless otherwise stated the results shown in this test report refer only to the sample(s) tested.

Attention: To check the authenticity of testing / inspection report & certificate, please contact us at telephone: (86-755) 8307 1443, or email: CN.Doccheck@sgs.com

3rd Building, No. 889 Yishan Road Xuhui District, Shanghai China 200233 t E&E (86-21) 61402553 f E&E (86-21) 64953679 www.sgsgroup.com.cn
中国·上海·徐汇区宜山路889号3号楼 邮编: 200233 t HL (86-21) 61402594 f HL (86-21) 61156899 e sgs.china@sgs.com

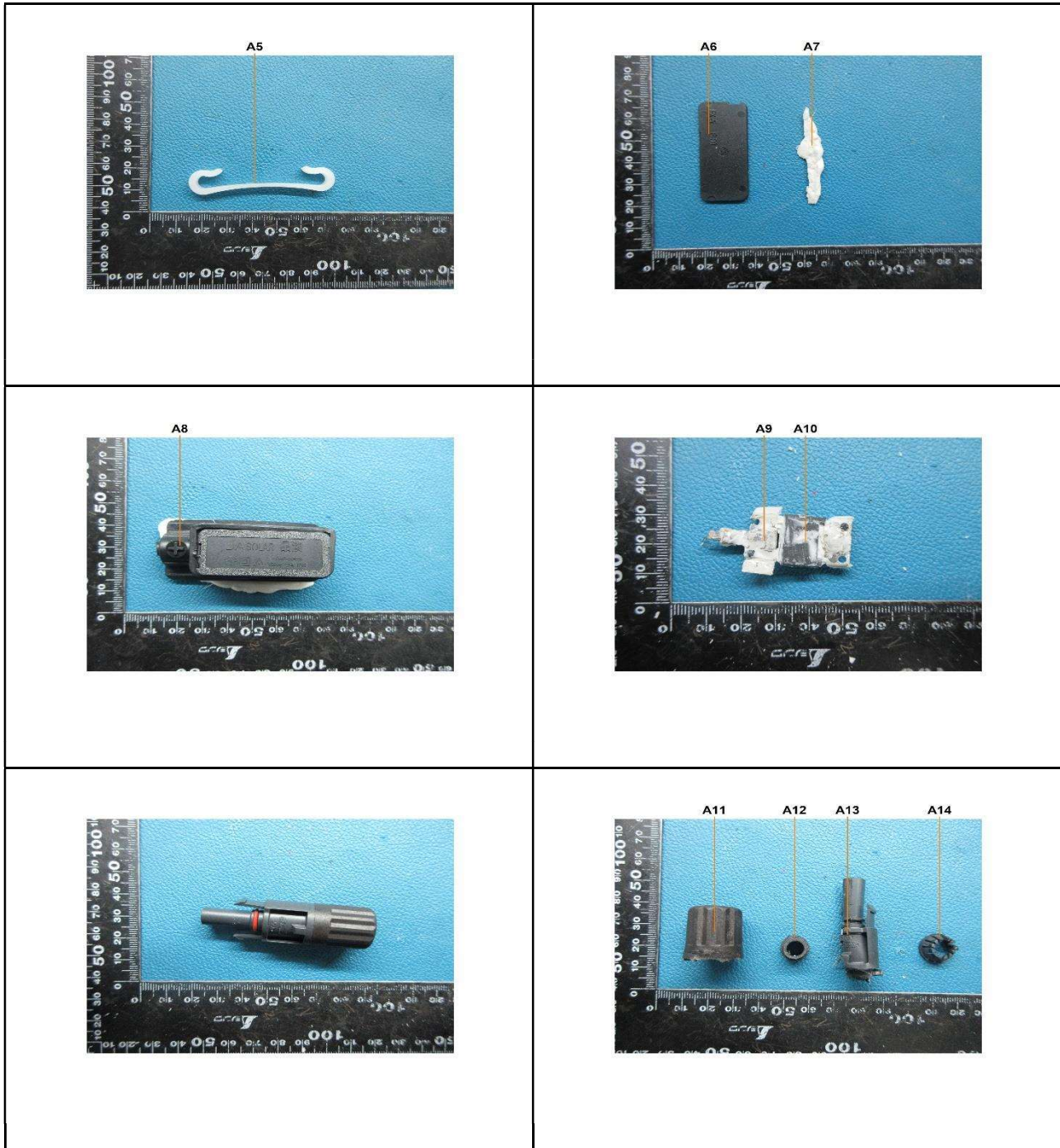
Sample photos:



Unless otherwise agreed in writing, this document is issued by the Company subject to its General Conditions of Service printed overleaf, available on request or accessible at <http://www.sgs.com/en/Terms-and-Conditions.aspx> and, for electronic format documents, subject to Terms and Conditions for Electronic Documents at <http://www.sgs.com/en/Terms-and-Conditions/Terms-e-Documents.aspx>. Attention is drawn to the limitation of liability, indemnification and jurisdiction issues defined therein. Any holder of this document is advised that information contained hereon reflects the Company's findings at the time of its intervention only and within the limits of Client's instructions, if any. The Company's sole responsibility is to its Client and this document does not exonerate parties to a transaction from exercising all their rights and obligations under the transaction documents. This document cannot be reproduced except in full, without prior written approval of the Company. Any unauthorized alteration, forgery or falsification of the content or appearance of this document is unlawful and offenders may be prosecuted to the fullest extent of the law. Unless otherwise stated the results shown in this test report refer only to the sample(s) tested.

Attention: To check the authenticity of testing /inspection report & certificate, please contact us at telephone: (86-755) 8307 1443, or email: CN.Doccheck@sgs.com

SGS-CSTC Standards Technical Services (Shanghai) Co., Ltd. 3rd Building, No.889 Yishan Road Xuhui District, Shanghai China 200233 t E&E (86-21) 61402553 f E&E (86-21) 64953679 www.sgsgroup.com.cn
 Testing Center-Chemistry, Inc. 中国·上海·徐汇区宜山路889号3号楼 邮编: 200233 t HL (86-21) 61402594 f HL (86-21) 61156899 e sgs.china@sgs.com

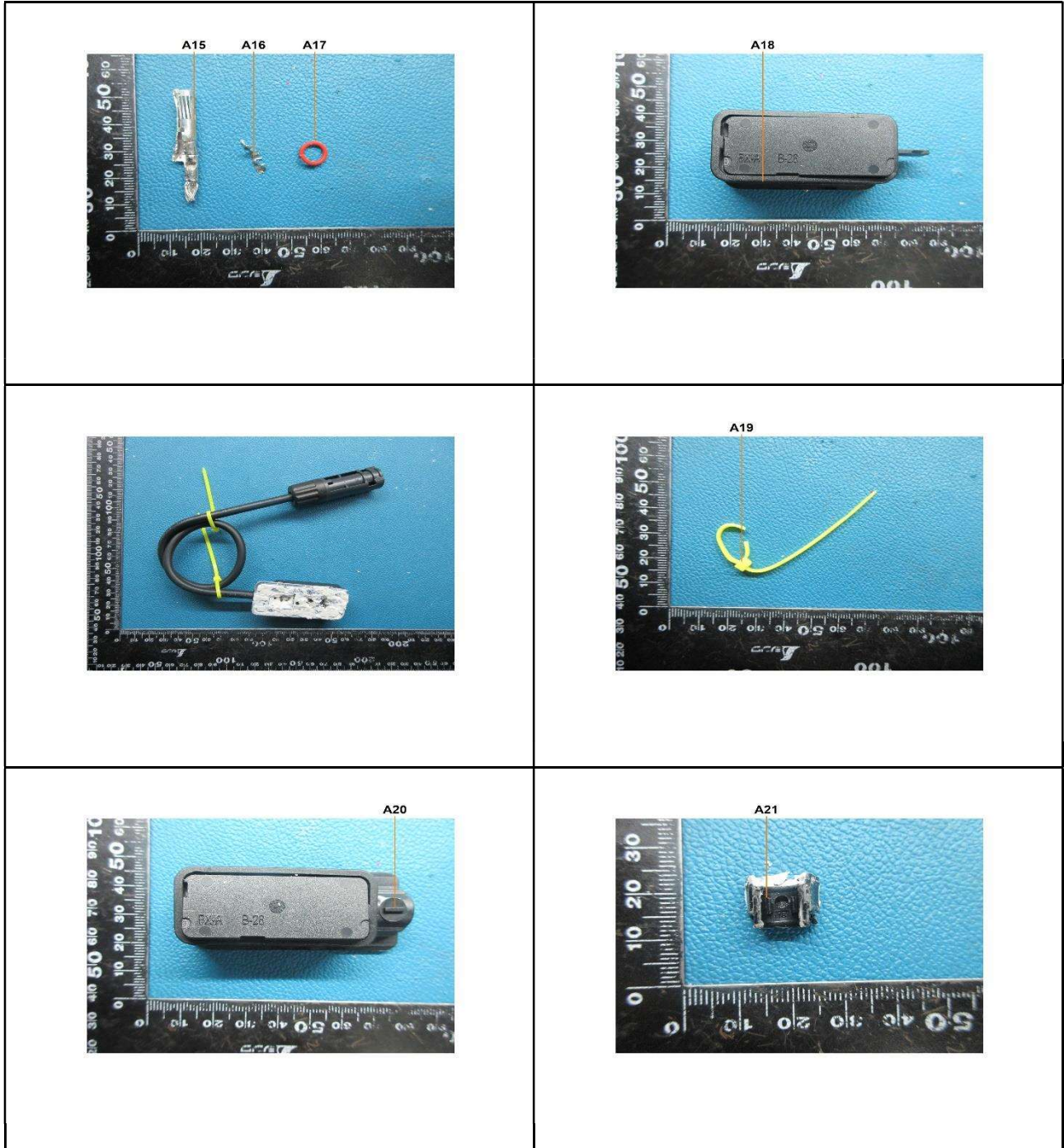


SGS-CSTC Standards Technical Services (Shanghai) Co., Ltd.
Testing Center-Chemical Industry

Unless otherwise agreed in writing, this document is issued by the Company subject to its General Conditions of Service printed overleaf, available on request or accessible at <http://www.sgs.com/en/Terms-and-Conditions.aspx> and, for electronic format documents, subject to Terms and Conditions for Electronic Documents at <http://www.sgs.com/en/Terms-and-Conditions/Terms-e-Documents.aspx>. Attention is drawn to the limitation of liability, indemnification and jurisdiction issues defined therein. Any holder of this document is advised that information contained hereon reflects the Company's findings at the time of its intervention only and within the limits of Client's instructions, if any. The Company's sole responsibility is to its Client and this document does not exonerate parties to a transaction from exercising all their rights and obligations under the transaction documents. This document cannot be reproduced except in full, without prior written approval of the Company. Any unauthorized alteration, forgery or falsification of the content or appearance of this document is unlawful and offenders may be prosecuted to the fullest extent of the law. Unless otherwise stated the results shown in this test report refer only to the sample(s) tested.

Attention: To check the authenticity of testing /inspection report & certificate, please contact us at telephone: (86-755) 8307 1443, or email: CN.Doccheck@sgs.com

3rd Building, No. 889 Yishan Road Xuhui District, Shanghai China 200233 t E&E (86-21) 61402553 f E&E (86-21) 64953679 www.sgsgroup.com.cn
中国·上海·徐汇区宜山路889号3号楼 邮编: 200233 t HL (86-21) 61402594 f HL (86-21) 61156899 e sgs.china@sgs.com

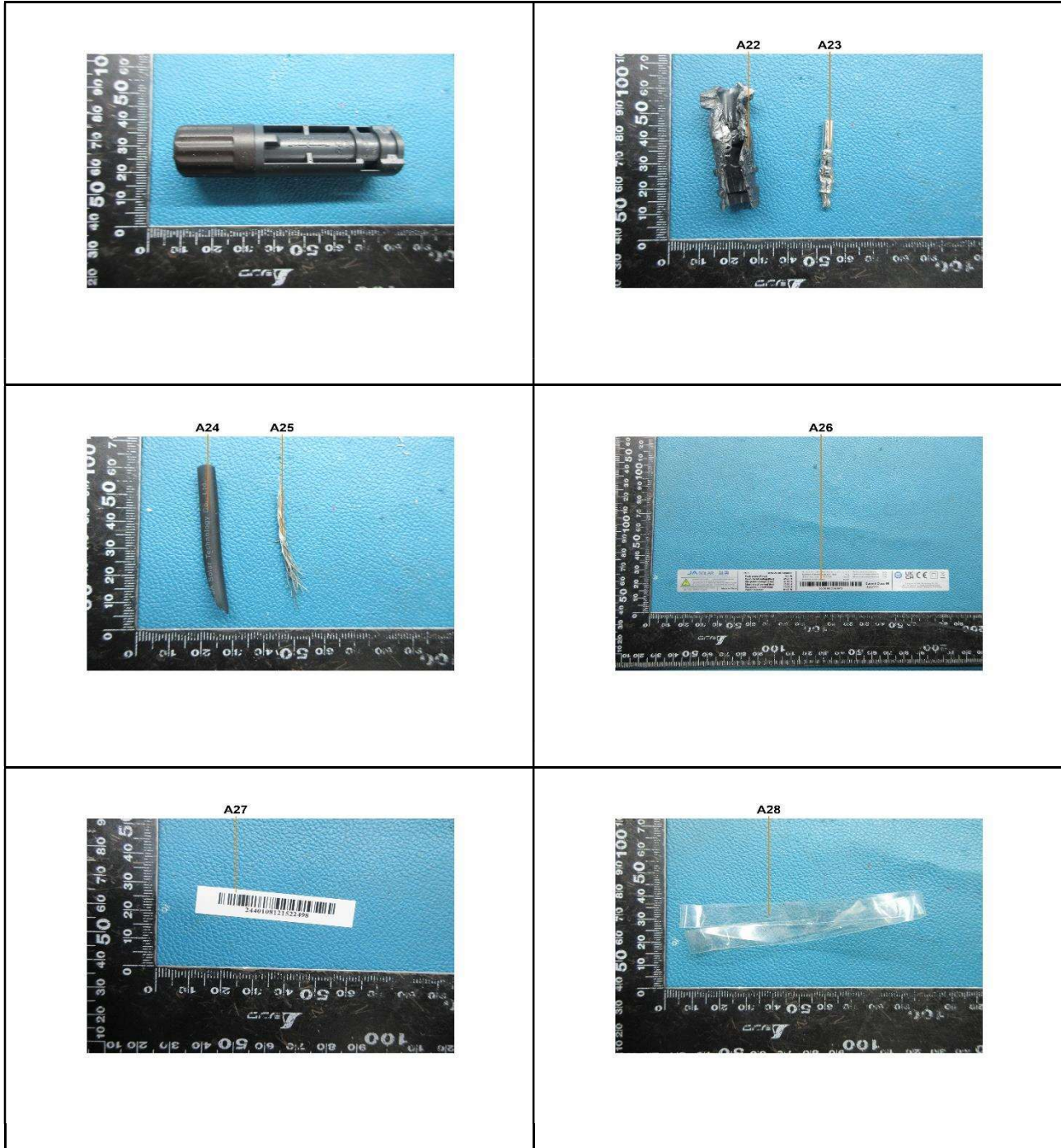


SGS-CSTC Standards Technical Services (Shanghai) Co., Ltd.
Testing Center-Chemistry

Unless otherwise agreed in writing, this document is issued by the Company subject to its General Conditions of Service printed overleaf, available on request or accessible at <http://www.sgs.com/en/Terms-and-Conditions.aspx> and, for electronic format documents, subject to Terms and Conditions for Electronic Documents at <http://www.sgs.com/en/Terms-and-Conditions/Terms-e-Documents.aspx>. Attention is drawn to the limitation of liability, indemnification and jurisdiction issues defined therein. Any holder of this document is advised that information contained hereon reflects the Company's findings at the time of its intervention only and within the limits of Client's instructions, if any. The Company's sole responsibility is to its Client and this document does not exonerate parties to a transaction from exercising all their rights and obligations under the transaction documents. This document cannot be reproduced except in full, without prior written approval of the Company. Any unauthorized alteration, forgery or falsification of the content or appearance of this document is unlawful and offenders may be prosecuted to the fullest extent of the law. Unless otherwise stated the results shown in this test report refer only to the sample(s) tested.

Attention: To check the authenticity of testing /inspection report & certificate, please contact us at telephone: (86-755) 8307 1443, or email: CN.Doccheck@sgs.com

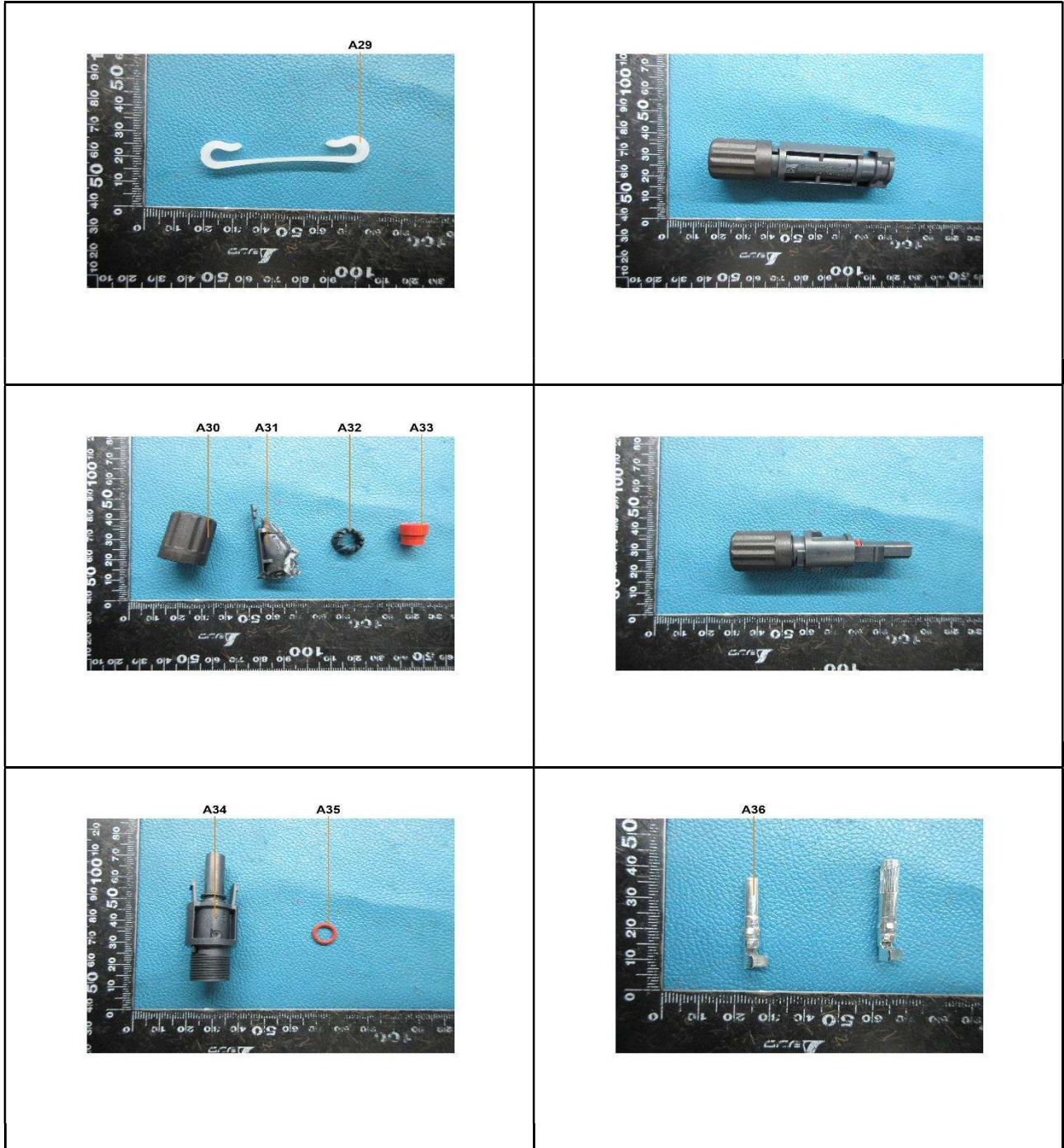
3rd Building, No.889 Yishan Road Xuhui District, Shanghai China 200233 t E&E (86-21) 61402553 f E&E (86-21) 64953679 www.sgsgroup.com.cn
中国·上海·徐汇区宜山路889号3号楼 邮编: 200233 t HL (86-21) 61402594 f HL (86-21) 61156899 e sgs.china@sgs.com



SGS-CSTC (Shanghai) Technical Services (Shanghai) Co., Ltd.
 Testing Center-Chemical Industry

Unless otherwise agreed in writing, this document is issued by the Company subject to its General Conditions of Service printed overleaf, available on request or accessible at <http://www.sgs.com/en/Terms-and-Conditions.aspx> and, for electronic format documents, subject to Terms and Conditions for Electronic Documents at <http://www.sgs.com/en/Terms-and-Conditions/Terms-e-Document.aspx>. Attention is drawn to the limitation of liability, indemnification and jurisdiction issues defined therein. Any holder of this document is advised that information contained hereon reflects the Company's findings at the time of its intervention only and within the limits of Client's instructions, if any. The Company's sole responsibility is to its Client and this document does not exonerate parties to a transaction from exercising all their rights and obligations under the transaction documents. This document cannot be reproduced except in full, without prior written approval of the Company. Any unauthorized alteration, forgery or falsification of the content or appearance of this document is unlawful and offenders may be prosecuted to the fullest extent of the law. Unless otherwise stated the results shown in this test report refer only to the sample(s) tested.

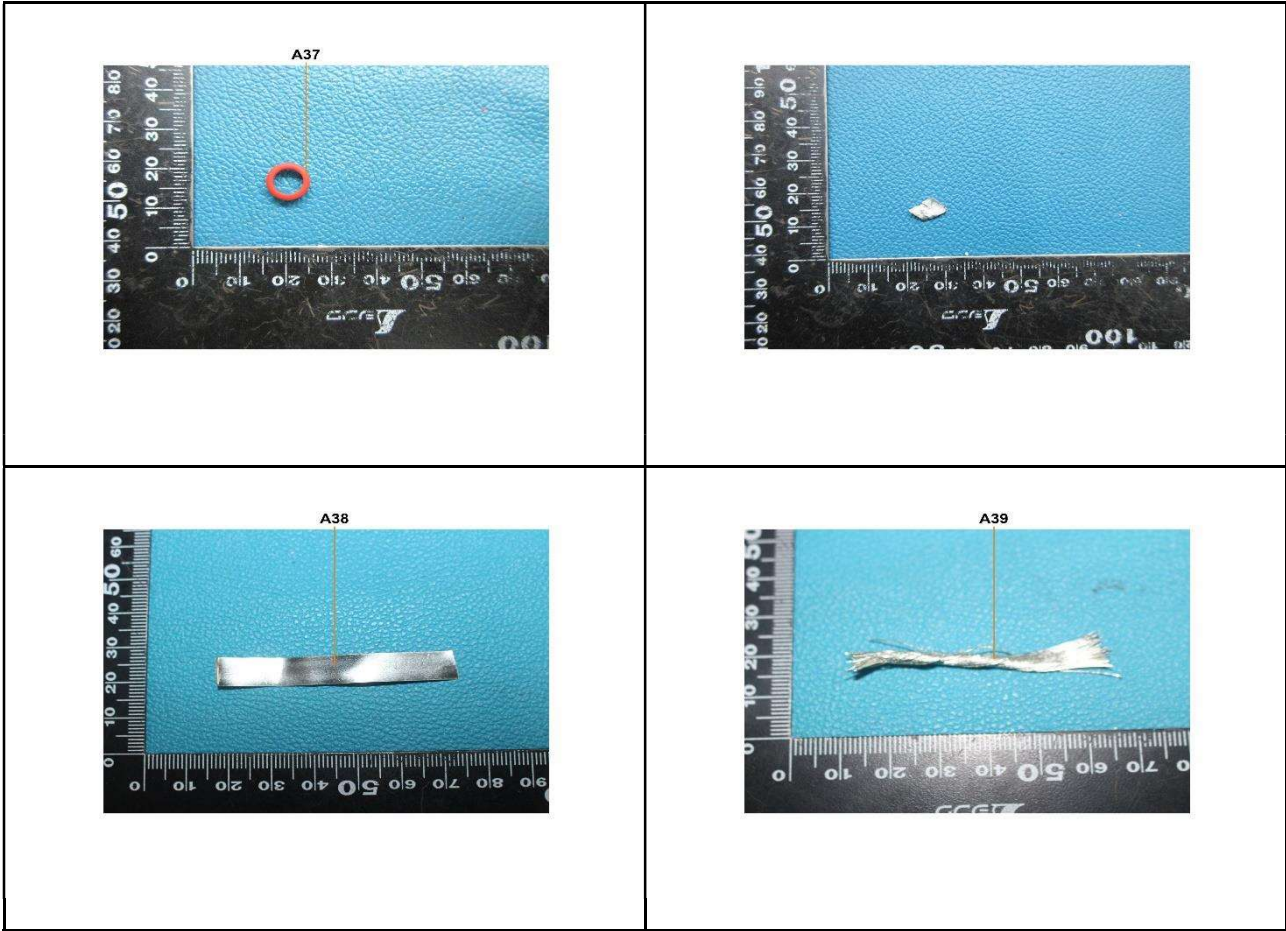
Attention: To check the authenticity of testing /inspection report & certificate, please contact us at telephone: (86-755) 8307 1443, or email: CN.Doccheck@sgs.com
 3rd Building, No.889 Yishan Road Xuhui District, Shanghai China 200233 t E&E (86-21) 61402553 f E&E (86-21) 64953679 www.sgsgroup.com.cn
 中国·上海·徐汇区宜山路889号3号楼 邮编: 200233 t HL (86-21) 61402594 f HL (86-21) 61156899 e sgs.china@sgs.com



Unless otherwise agreed in writing, this document is issued by the Company subject to its General Conditions of Service printed overleaf, available on request or accessible at <http://www.sgs.com/en/Terms-and-Conditions.aspx> and, for electronic format documents, subject to Terms and Conditions for Electronic Documents at <http://www.sgs.com/en/Terms-and-Conditions/Terms-e-Documents.aspx>. Attention is drawn to the limitation of liability, indemnification and jurisdiction issues defined therein. Any holder of this document is advised that information contained hereon reflects the Company's findings at the time of its intervention only and within the limits of Client's instructions, if any. The Company's sole responsibility is to its Client and this document does not exonerate parties to a transaction from exercising all their rights and obligations under the transaction documents. This document cannot be reproduced except in full, without prior written approval of the Company. Any unauthorized alteration, forgery or falsification of the content or appearance of this document is unlawful and offenders may be prosecuted to the fullest extent of the law. Unless otherwise stated the results shown in this test report refer only to the sample(s) tested.

Attention: To check the authenticity of testing / inspection report & certificate, please contact us at telephone: (86-755) 8307 1443, or email: CN.Doccheck@sgs.com

3rd Building, No. 889 Yishan Road Xuhui District, Shanghai China 200233 t E&E (86-21) 61402553 f E&E (86-21) 64953679 www.sgsgroup.com.cn
 中国·上海·徐汇区宜山路889号3号楼 邮编: 200233 t HL (86-21) 61402594 f HL (86-21) 61156899 e sgs.china@sgs.com



SGS authenticate the photo on original report only
 *** End of Report ***



Unless otherwise agreed in writing, this document is issued by the Company subject to its General Conditions of Service printed overleaf, available on request or accessible at <http://www.sgs.com/en/Terms-and-Conditions.aspx> and, for electronic format documents, subject to Terms and Conditions for Electronic Documents at <http://www.sgs.com/en/Terms-and-Conditions/Terms-e-Documents.aspx>. Attention is drawn to the limitation of liability, indemnification and jurisdiction issues defined therein. Any holder of this document is advised that information contained hereon reflects the Company's findings at the time of its intervention only and within the limits of Client's instructions, if any. The Company's sole responsibility is to its Client and this document does not exonerate parties to a transaction from exercising all their rights and obligations under the transaction documents. This document cannot be reproduced except in full, without prior written approval of the Company. Any unauthorized alteration, forgery or falsification of the content or appearance of this document is unlawful and offenders may be prosecuted to the fullest extent of the law. Unless otherwise stated the results shown in this test report refer only to the sample(s) tested.

Attention: To check the authenticity of testing / inspection report & certificate, please contact us at telephone: (86-755) 8307 1443, or email: CN.Doccheck@sgs.com

3rd Building, No. 889 Yishan Road Xuhui District, Shanghai China 200233 t E&E (86-21) 61402553 f E&E (86-21) 64953679 www.sgsgroup.com.cn
 中国·上海·徐汇区宜山路889号3号楼 邮编: 200233 t HL (86-21) 61402594 f HL (86-21) 61156899 e sgs.china@sgs.com