


**Technical Data/** *Technische Daten*

## HS rail HK I=172 4x5 4x6 mm

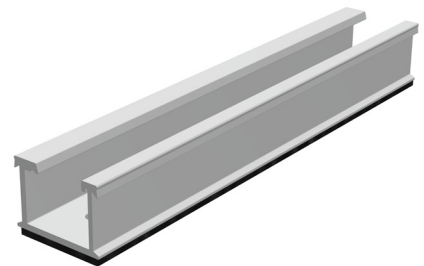
### HS Schiene HK I=172 4x5 4x6 mm

**description/** *Artikelbezeichnung:*

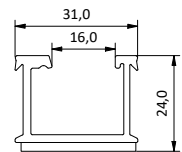
HS rail HK I=172 4x5 4x6 mm/HS Schiene HK I=172 4x5 4x6 mm

**art.-no./** *Artikelnummer:*

710-400-112


**Product Data/** *Artikeldaten*

 material identification/*Werkstoffbezeichnung:*

 EN AW-6063 T6  
(EN AW-AIMg0,7Si)

**static values/** *Statische Werte:*

$I_x$	=	1,086 cm <sup>4</sup>
$I_y$	=	1,983 cm <sup>4</sup>
$W_x$	=	0,734 cm <sup>3</sup>
$W_y$	=	0,767 cm <sup>3</sup>
A	=	1,616 cm <sup>2</sup>

**general values/** *Allgemeine Werte:*

width/ <i>Breite</i>	=	31,00 mm
height/ <i>Höhe</i>	=	24,00 mm
weight/ <i>Gewicht</i>	=	0,074 kg
length/ <i>Länge</i>	=	172,00 mm

**notice/** *Hinweise:*

incl. 8 x holes (4xd=5mm, 4xd=6mm)/inkl. 8 x Bohrungen (4xd=5mm, 4xd=6mm)

incl. EPDM-cellular rubber (width 30mm and length 172mm)

/inkl. EPDM-Zellgummi (30mm breit und 172mm lang)

