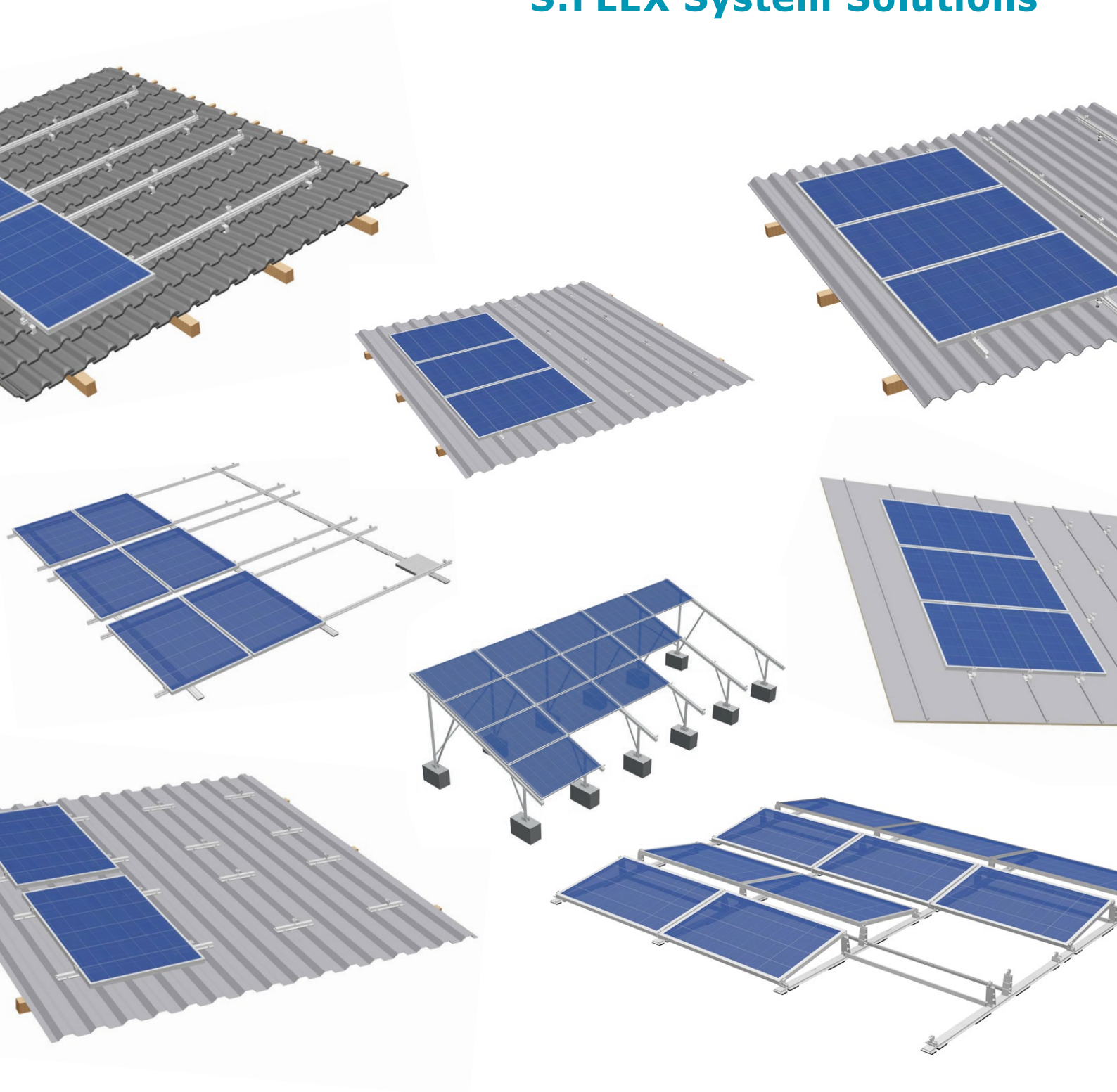




## S:FLEX System Solutions



Flat roof, pitched roof, balcony, façade and ground mount structures for flexible and fast installations

## Balcony system

System for balcony power plants	03
---------------------------------	----

## Façade and Pitched Roof System

Insertion system ELS	04
----------------------	----

## Pitched Roof Systems

Roof hooks	05
Roof hooks Hybrid / XL	06
Roof hook plain tile	07
Standing seam clamps	08
Standing seam clamps with rails	09
High-bead rail HK 125 / 172	10
High-bead rail HK 125 XL 50 / 100	11
Bracket for sheet metal	12
High-bead rail Lift	13
Trapezoidal sheet metal rail Lift	14
Trapezoidal sheet metal rail Vario	15
Trapezoidal sheet metal rail	16
Hanger bolts and solar fasteners	17
Flat Direct for foil / bitumen roofs and sandwich elements	18
Flat Direct with assembly posts	19
Delta triangles with hanger bolts	20
Delta triangles with trapezoidal sheet metal rails	21

## Flat Roof Systems

LEICHTmount RAIL 2.0 S / EW with low ballast	22, 23
Green roof	24
Delta Concrete	25

## Ground-Mount Systems

Delta Concrete	26
Carport Single / Double	27
LEICHTmount G S / EW with ballast	28, 29

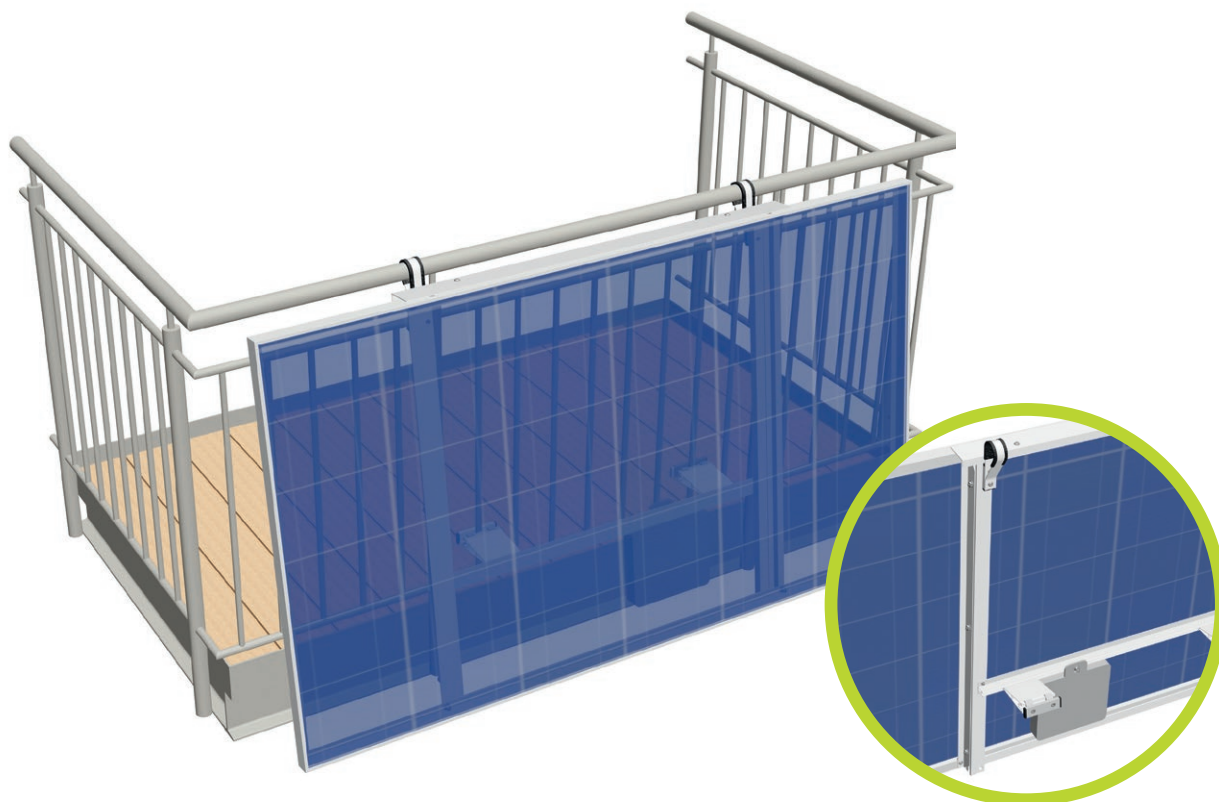
## Accessories for Equipotential Bonding

Grounding components	30
----------------------	----

## Contact

S:FLEX offices internationally	31
--------------------------------	----

**PV frame technology by professionals for practitioners –  
from pre-assembled components to fully customised solutions!**



Guide rail



Module slide rail



Suspension bracket



Lift adapter

**Application:**

Metal balcony railings with vertical bars

**Fastening:**

Mechanical attachment to railing and bars

**Module type:**

Framed modules with up to 2 m<sup>2</sup> module surface

**Module pitch:**

Up to 8° against the parapet

**Wind load:**

Up to 2.4 kN/m<sup>2</sup>

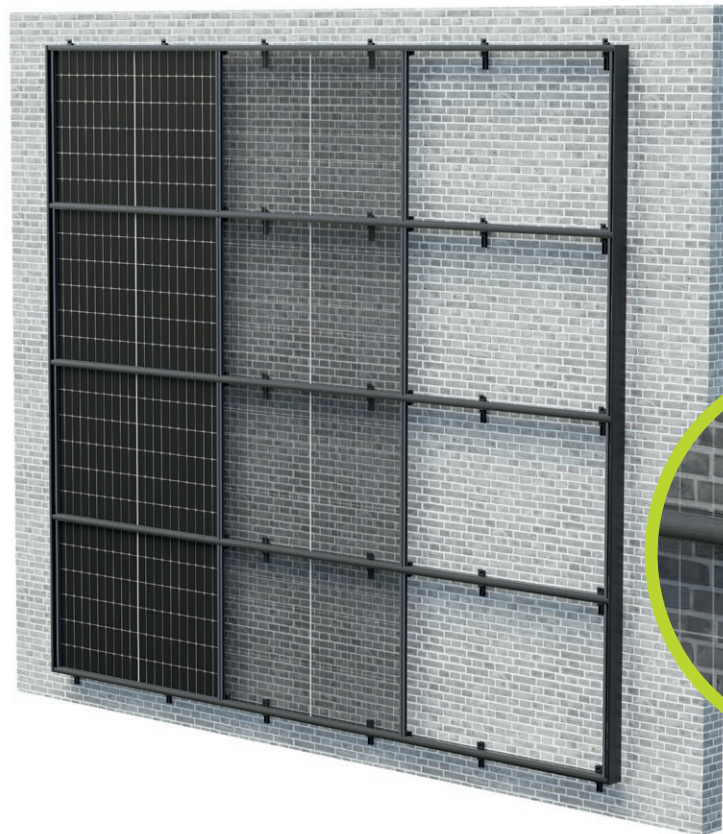
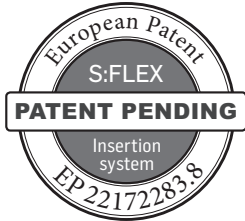
**Building height:**

25 m max.

**Advantages:**

- Constructive consideration of the low design loads of balconies
- Particularly easy and risk-free attachment with rails attached to the modules that slide securely into the balcony mounting
- Standard-compliant linear bearing of the PV modules





**ELS rail**

**ELS side cladding**

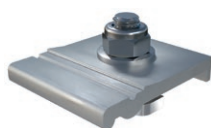


**ELS eaves cladding**

**ELS Fix clamp**



**ELS cross adapter clamp**



**Application:**

Façades, noise protection walls and massive balustrades or pitched roofs with roof tiles, sheet metal roofs

**Fastening:**

Façade: on-site

Pitched roof: compatible with all S:FLEX fastening solutions for tiled roofs and metal sheet roofing

**Roof pitch:**

10 to 75 degrees

**Module type:**

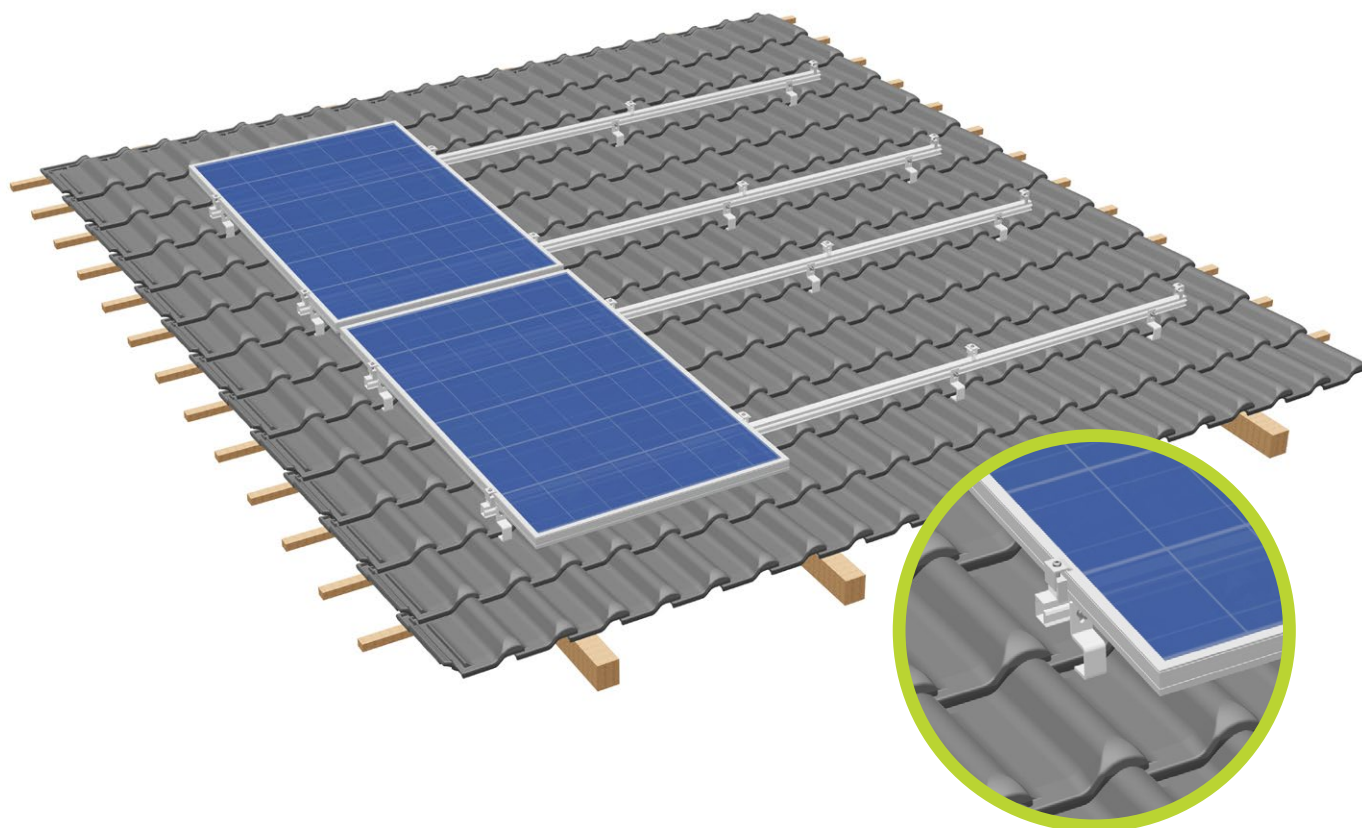
Framed modules, all common sizes

**Module orientation:**

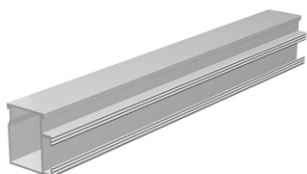
Portrait/landscape

**Advantages:**

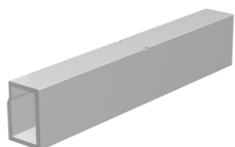
- Aesthetically pleasing modular surfaces with clean finishes
- All components for a special look available in black
- Suitable for module frame heights of 25 to 45 mm – using just one type of insertion rail
- Newly developed module clamps that prevent rattling of the modules and thermally induced glass breakage/cracks
- Simple grounding, optimized service-friendliness



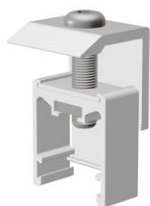
Mounting rail ST-AK 5/40



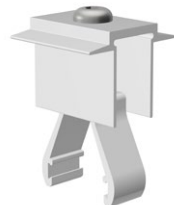
Splice 5



End clamp AK II Klick 30-50 A



Mid clamp AK II Klick 30-50 A



Roof hook Alu 93-7-45



**Application:**

Pitched roof with tiles

**Fastening:**

Roof hook on rafters (min. rafter width 36 mm)

**Roof pitch:**

Up to 75 degrees

**Module type:**

Framed and frameless modules

**Module orientation:**

Landscape/portrait

**Layers of rails:**

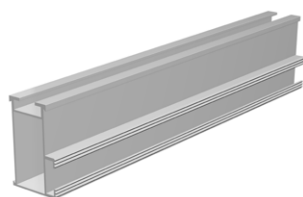
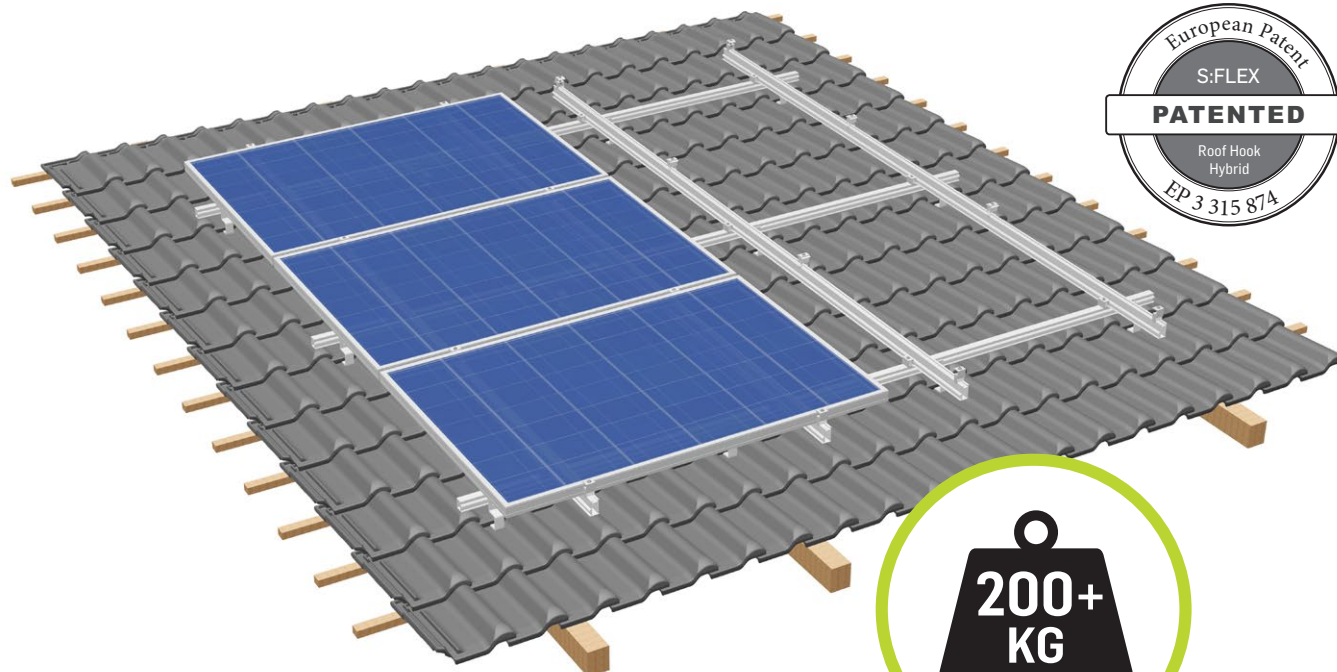
Single/double layer

**Advantages:**

- Every size of module array possible
- Height compensation: 40–58 mm in the batten zone / 21 mm in the rail zone
- For all common rafter distances

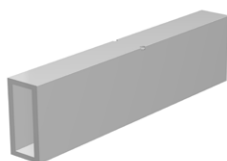
## System for tiled roofs

Mounting with roof hook Hybrid / Hybrid XL for high loads



Mounting rail  
ST-AK 13/60

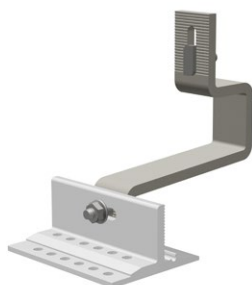
Splice 13



End clamp AK II Klick 30-50 A



Mid clamp AK II Klick 30-50 A



Roof hook Hybrid  
112-7-48 8mm

Roof hook Hybrid  
112-7-56 XL 8mm



Metal roof tile  
e.g. concrete type

### Application:

Pitched roof with tiles

### Fastening:

Roof hook on rafters (min. rafter width 45 mm)

### Roof pitch:

Up to 75 degrees

### Module type:

Framed and frameless modules

### Module orientation:

Landscape/portrait

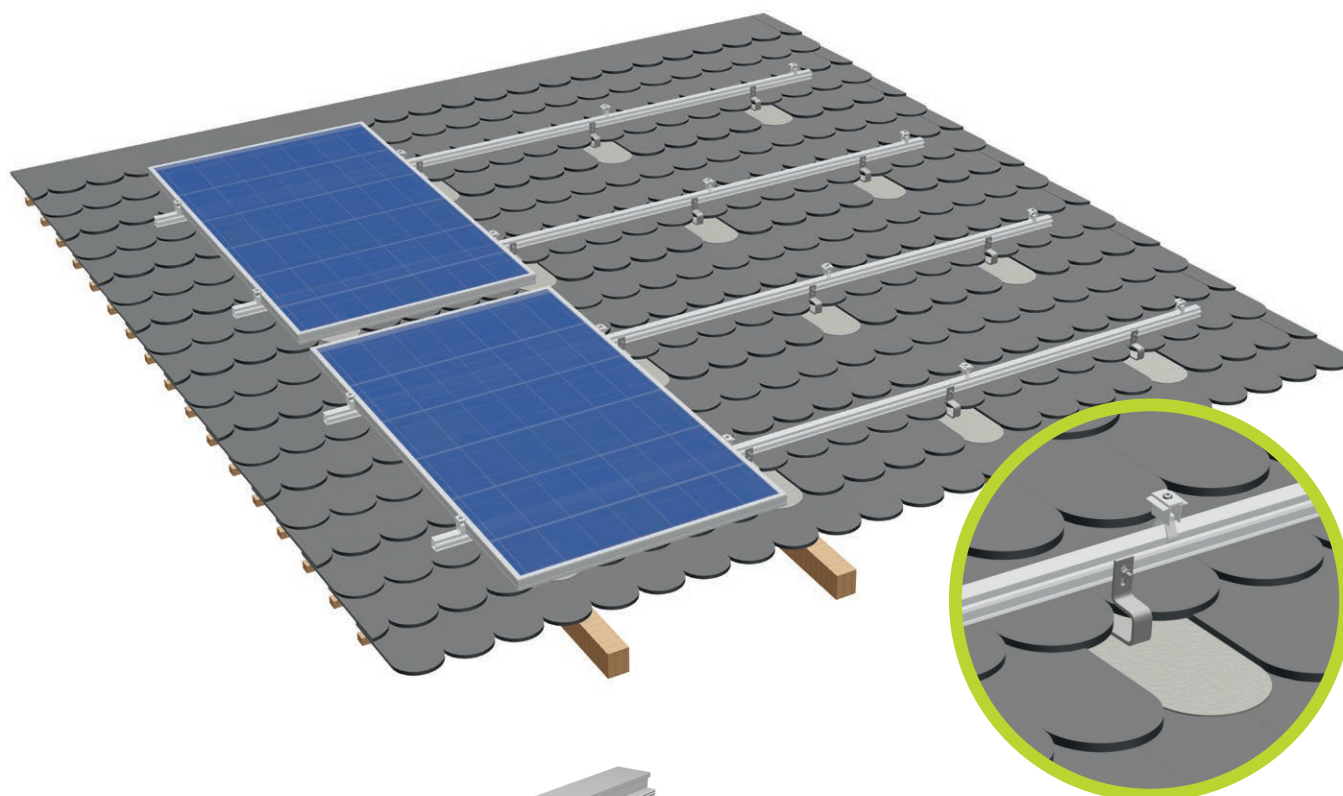
### Layers of rails:

Single/double layer

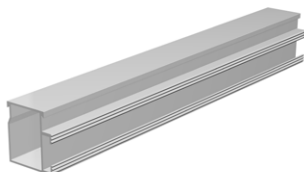
### Advantages:

- Suitable for particularly high loads
- Also available as XL version for large-format tiles
- Use of metal roof tiles provides additional protection for the roof covering
- Every size of module array possible
- Height compensation in the batten zone:  
46-61 mm (DH Hybrid) / 56-72 mm (DH Hybrid XL)
- For all common rafter distances

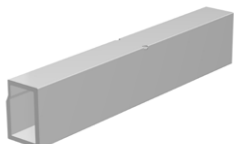




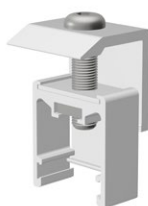
Mounting rail ST-AK 5/40



Splice 5



End clamp AK II Klick 30-50 A



Mid clamp AK II Klick 30-50 A



Roof hook plain tile 30x6



Metal roof tile  
type "Biber Vario" zinc plated



**Application:**

Pitched roof with plain tiles

**Fastening:**

Roof hook on rafters (min. rafter width 48 mm) with matching metal roof tile

**Roof pitch:**

Up to 75 degrees

**Module type:**

Framed and frameless modules

**Module orientation:**

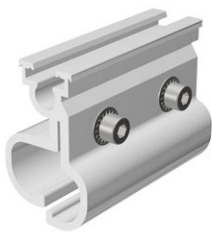
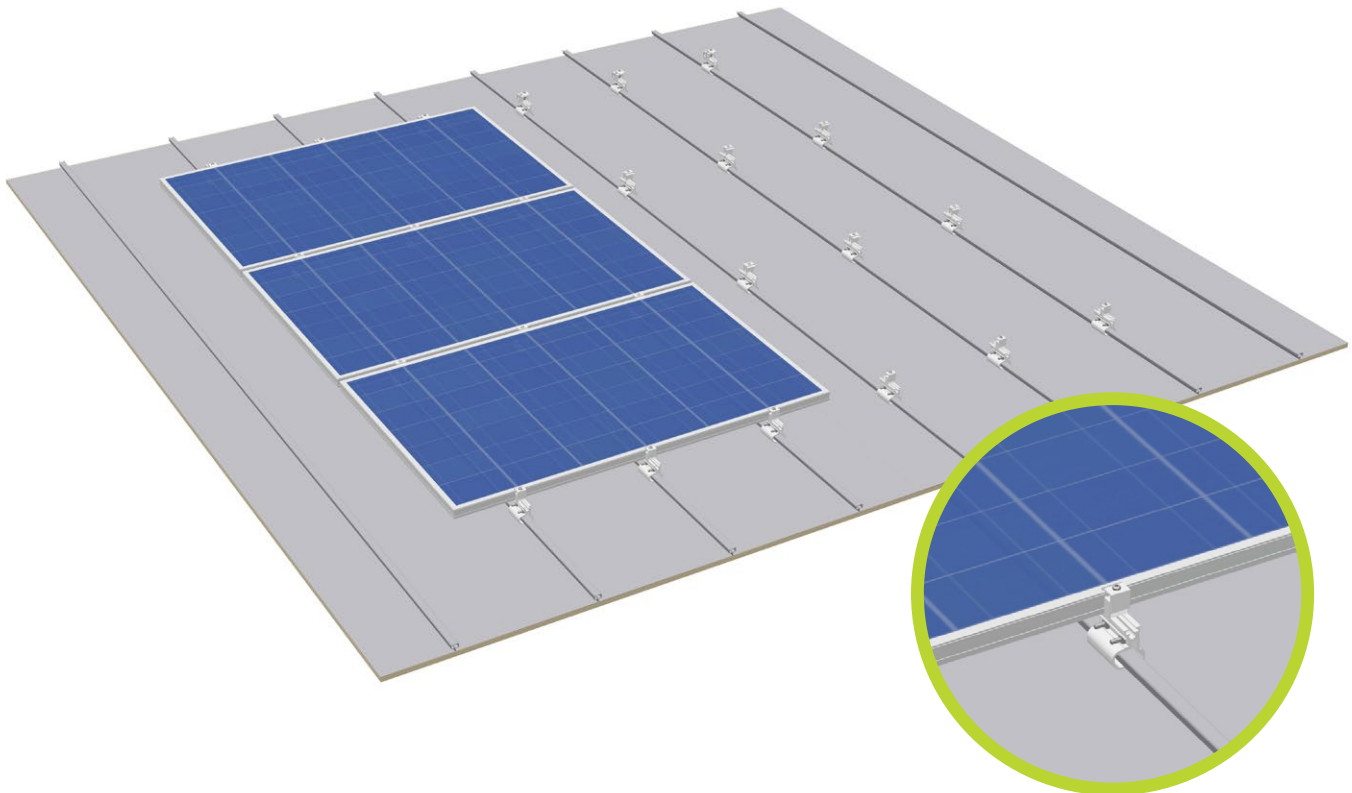
Portrait/landscape

**Layers of rails:**

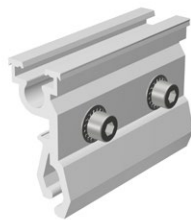
Single/double layer

**Advantages:**

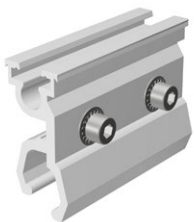
- Every size of module array possible
- For all common rafter distances



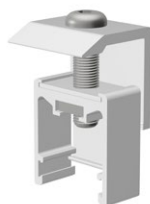
**Standing seam clamp 2.1**



**Standing seam clamp DCO**



**Standing seam clamp CL**



**End clamp AK II Klick 30-50 A**



**Mid clamp AK II Klick 30-50 A**

**Application:**

Standing seam clamp 2.1: Seamed roofing, e.g. standing seam, round seam, angle seam

Standing seam clamp DCO and CL: Industrial metal roof systems, e.g. Domitec/GBS, Klip-Lok 700, RibRoof 465

**Fastening:**

Non-penetrative

**Module type:**

Framed modules

**Module orientation:**

Landscape/portrait (for clamping on the short side)

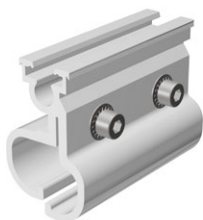
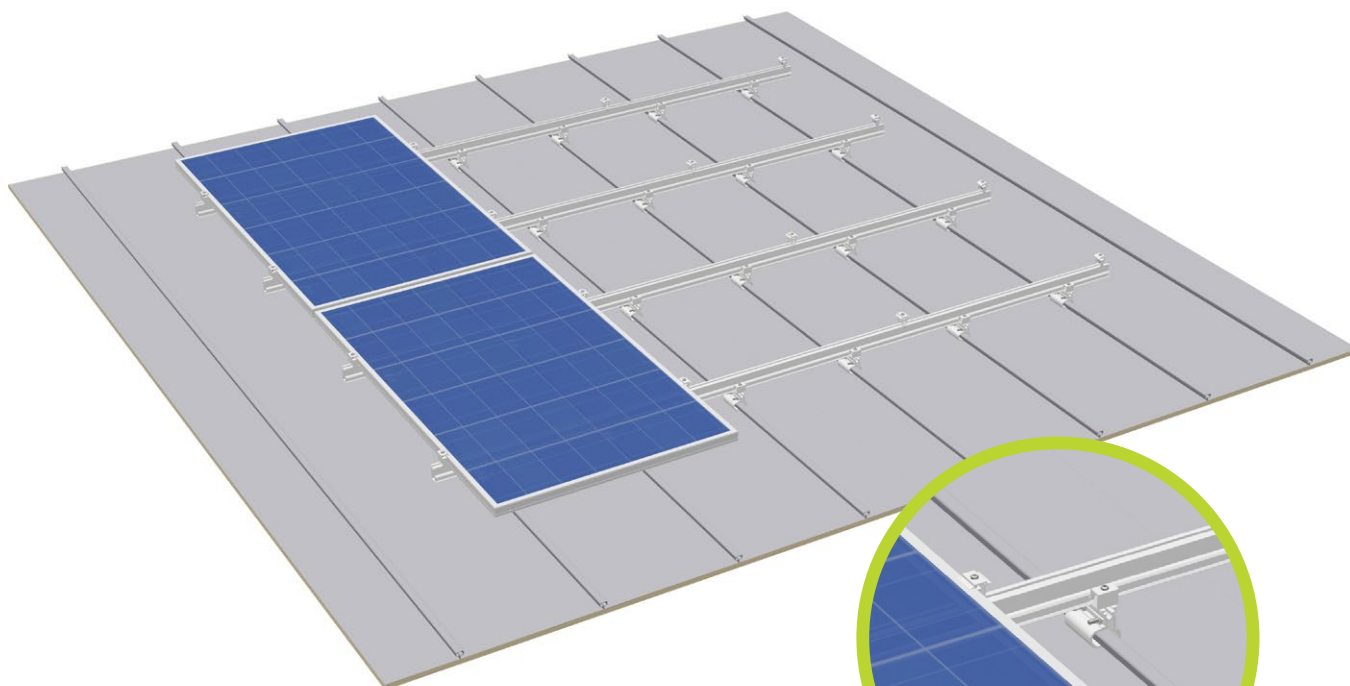
**Layers of rails:**

Single layer

**Advantages:**

- Modules mounted directly to the standing seam clamps
- No rails necessary
- Low material/logistics/installation costs
- Quick mounting
- No roof penetration



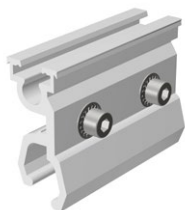


Standing seam  
clamp 2.1

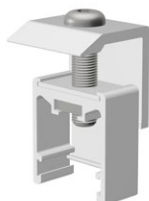
Standing seam  
clamp DCO



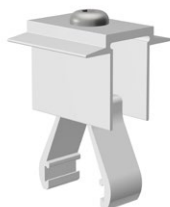
Standing seam  
clamp CL



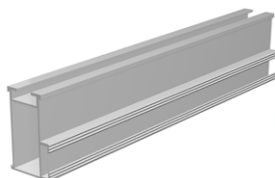
End clamp AK II Klick 30-50 A



Mid clamp AK II Klick 30-50 A



Cross adapter clamp AK



Mounting rail ST-AK 13/60

#### Application:

Standing seam clamp 2.1: Seamed roofing, e.g. standing seam, round seam, angle seam

Standing seam clamp DCO and CL: Industrial metal roof systems, e.g. Domitec/GBS, Klip-Lok 700, RibRoof 465

#### Fastening:

Non-penetrative

#### Module type:

Framed modules

#### Module orientation:

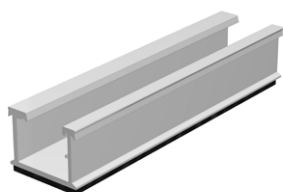
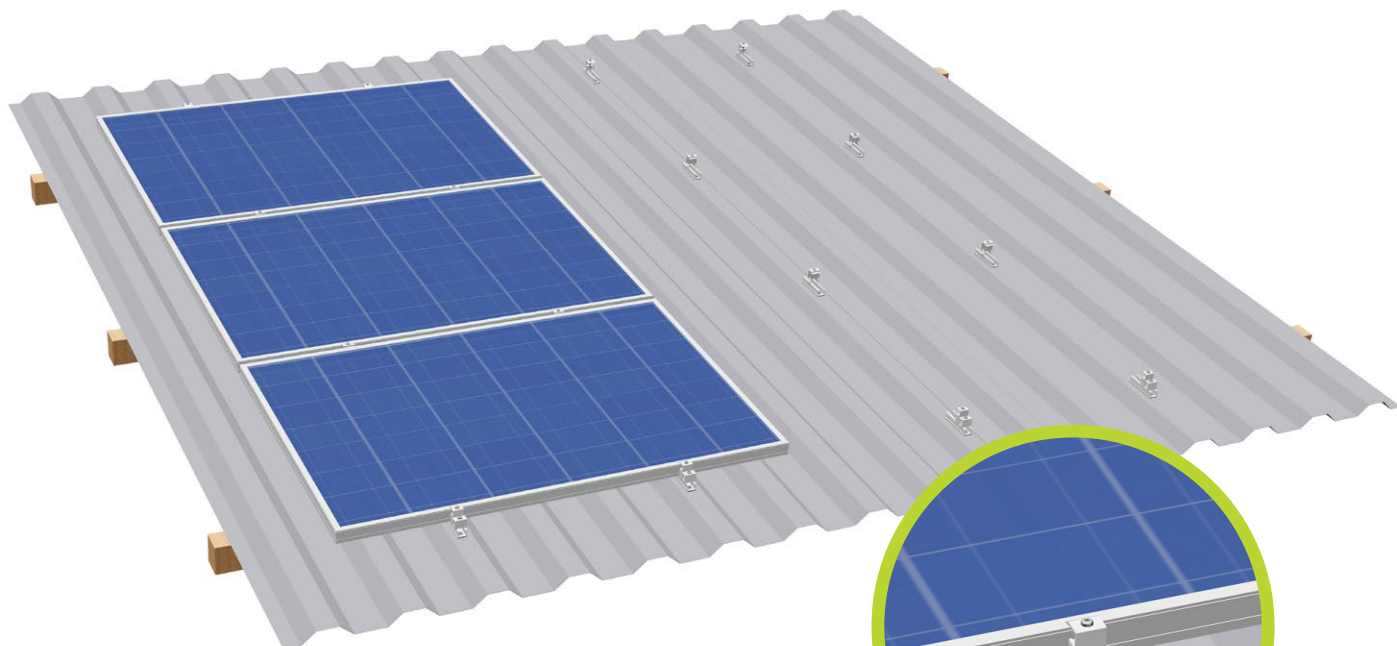
Landscape/portrait (for clamping on the short side)

#### Layers of rails:

Double layer

#### Advantages:

- Low material/installation costs
- Length of rails 3150 mm to 6200 mm
- High rigidity rails suitable for heavier loads
- No roof penetration



HS rail HK 125  
complete

HS rail HK 172  
complete



End clamp AK II Klick 30-50 A

Mid clamp AK II Klick 30-50 A



Sheet metal screw 4,5x25

Sheet metal screw 6x25



**Application:**

Trapezoidal sheet metal

**Fastening:**

Screwed onto raised corrugations

**Module type:**

Framed modules

**Module orientation:**

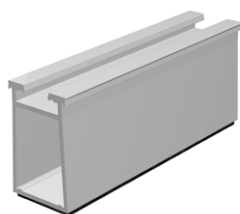
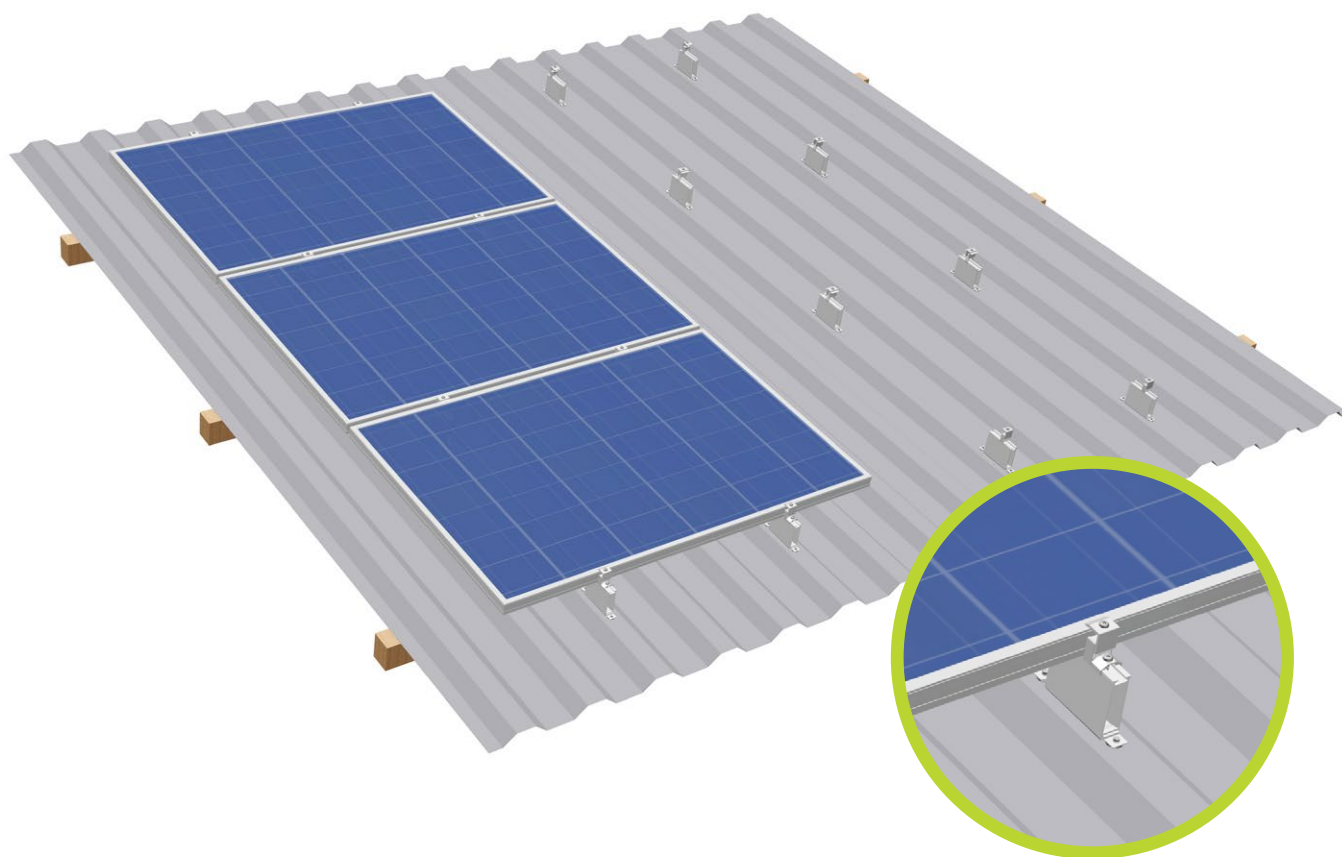
Landscape

**Layers of rails:**

Single layer

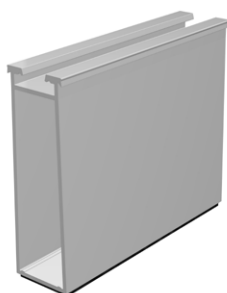
**Advantages:**

- Low material/fitting costs
- 24 mm height provide better rear ventilation, simplify cable routing, enable installation even on slightly corrugated roof coverings and offer more space for power optimizers or micro-inverters
- Rail lengths of 125 mm, 172 mm, 295 mm and 3300 mm
- High-bead rails HS HK l=125 mm and l=172 mm are supplied pre-fabricated with EPDM sealing tape. The 125 mm rail comes with 2x2 holes (5/6 mm), the 172 mm version has 2x4 pre-drilled holes (5/6 mm).



**HS rail HK 125 XL 50  
complete**

**HS rail HK 125 XL 100  
complete**



**HS bracket XL 130**

**End clamp AK II Klick 30-50 A**



**Mid clamp AK II Klick 30-50 A**



**Application:**

Trapezoidal sheet metal

**Fastening:**

Screwed or riveted onto raised corrugations

**Module type:**

Framed modules

**Module orientation:**

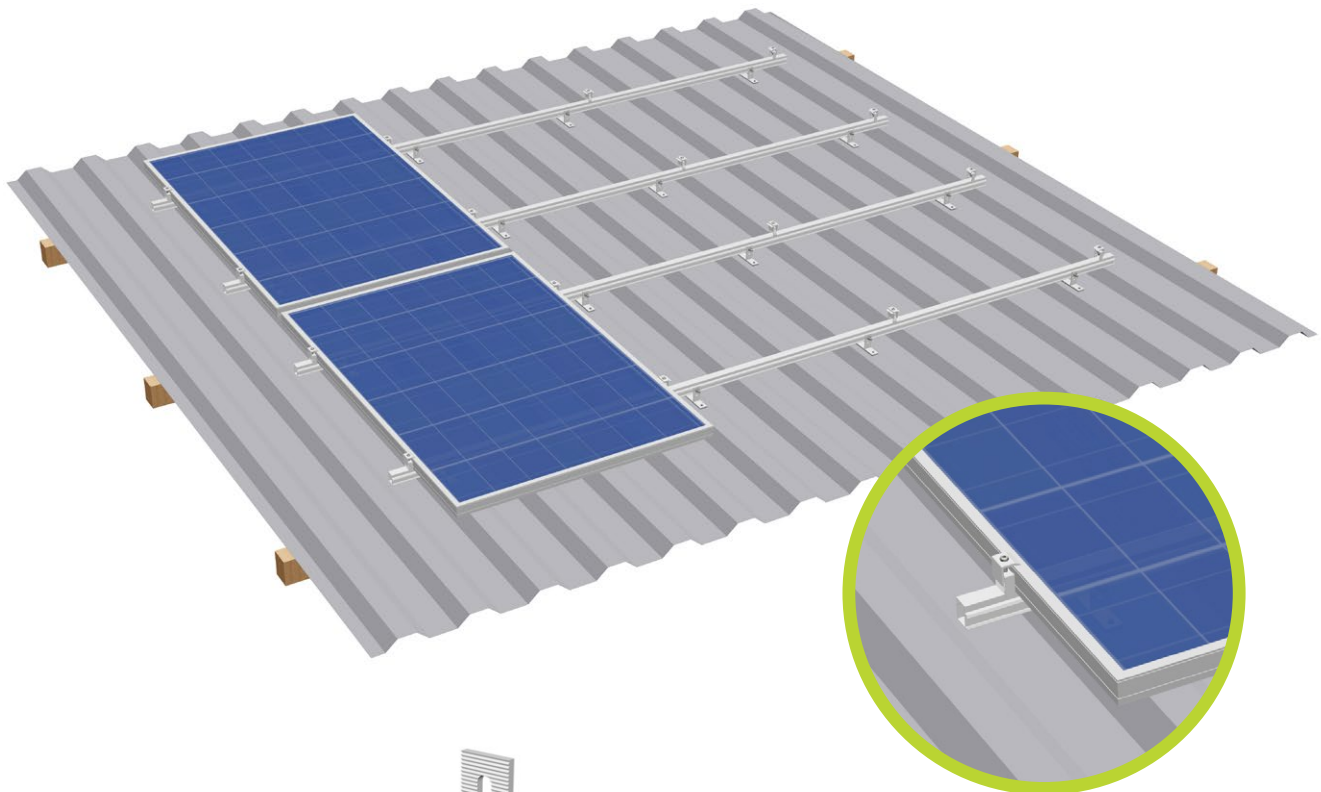
Landscape

**Layers of rails:**

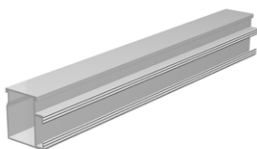
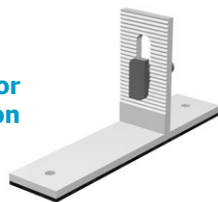
Single layer

**Advantages:**

- Low material/fitting costs
- Rail heights of 50 or 100 mm guarantee a sufficient distance from the roof covering for optimal rear ventilation and use at high temperatures
- Floating mounting with brackets reduces the number of expansion joints and enables optimal use of the roof area
- High-bead rails covered with protective fleece
- Brackets come pre-drilled and with EPDM sealing tape covered bottom side

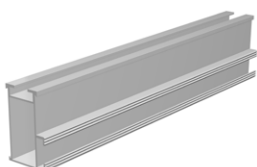


Bracket for  
sheet metal installation



Mounting rail ST-AK  
5/40

Cross adapter clamp AK



Mounting rail ST-AK  
13/60

End clamp AK II Klick 30-50 A



Mid clamp AK II Klick 30-50 A



**Application:**

Trapezoidal and corrugated sheet metal

**Fastening:**

Screwed or riveted onto raised corrugations

**Module type:**

Framed and frameless modules

**Module orientation:**

Portrait/landscape

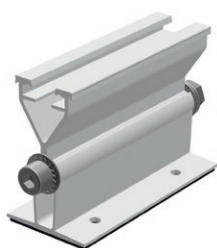
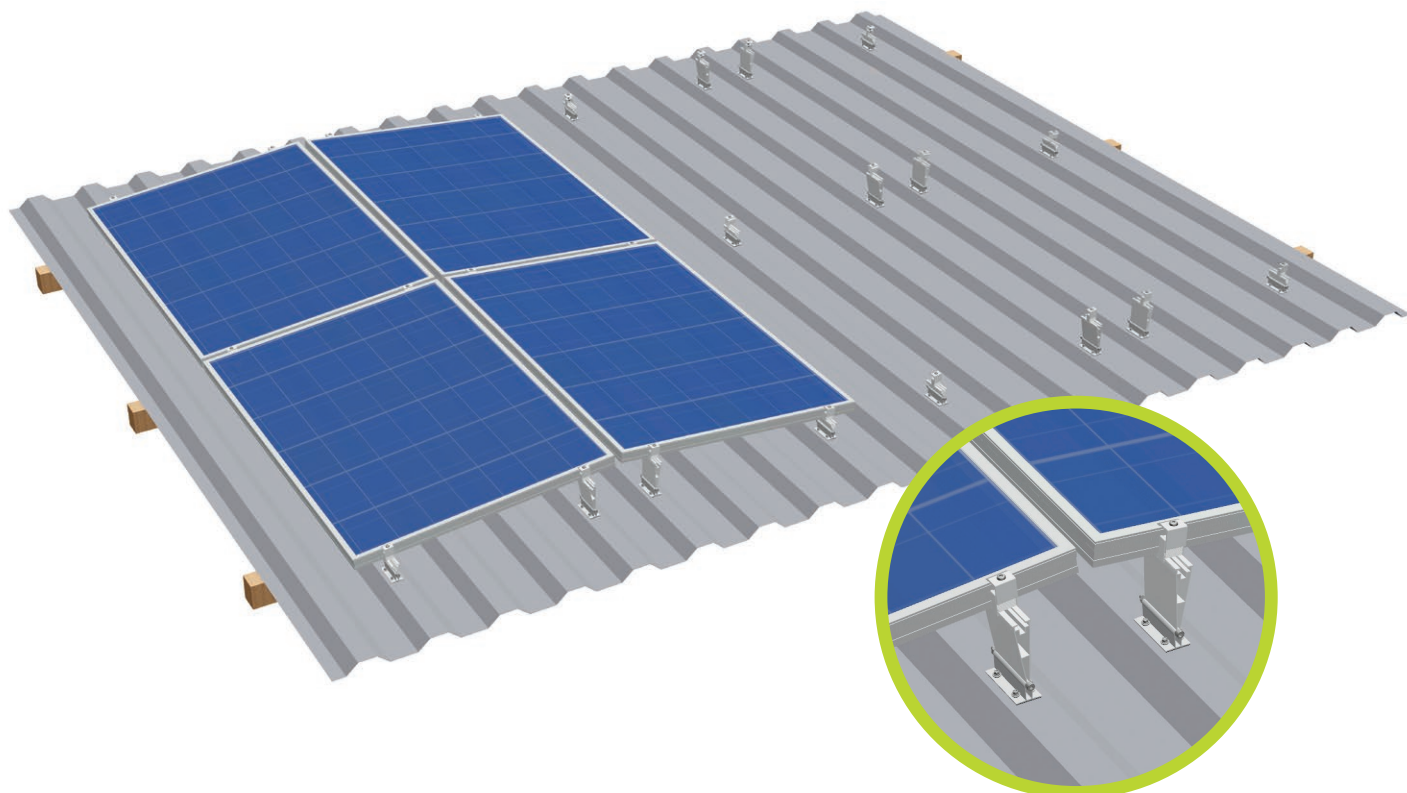
**Layers of rails:**

Single/double layer

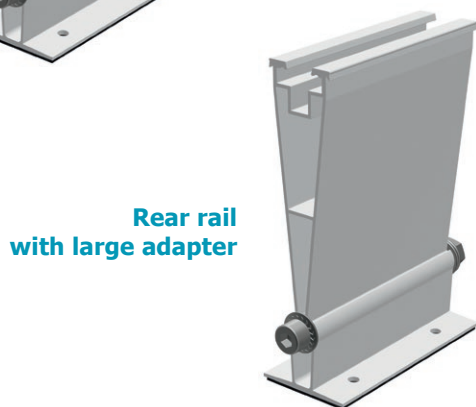
**Advantages:**

- Low fitting costs
- Every size of module array possible
- Height adjustable via elongated hole in the sheet metal bracket
- Sheet metal brackets are supplied prefabricated with 2 holes (5 mm) and EPDM sealing tape covered bottom side





**Front rail  
with small adapter**



**Rear rail  
with large adapter**



**End clamp AK II Klick 30-50 A**

**Mid clamp AK II Klick 30-50 A**



**Application:**

Trapezoidal sheet metal

**Fastening:**

Screwed with sheet metal screws to the raised seams

**Options:**

South and East-West orientation

**Module type:**

Framed and frameless modules, all common sizes

**Module orientation:**

Portrait/landscape

**Module pitch Lift:**

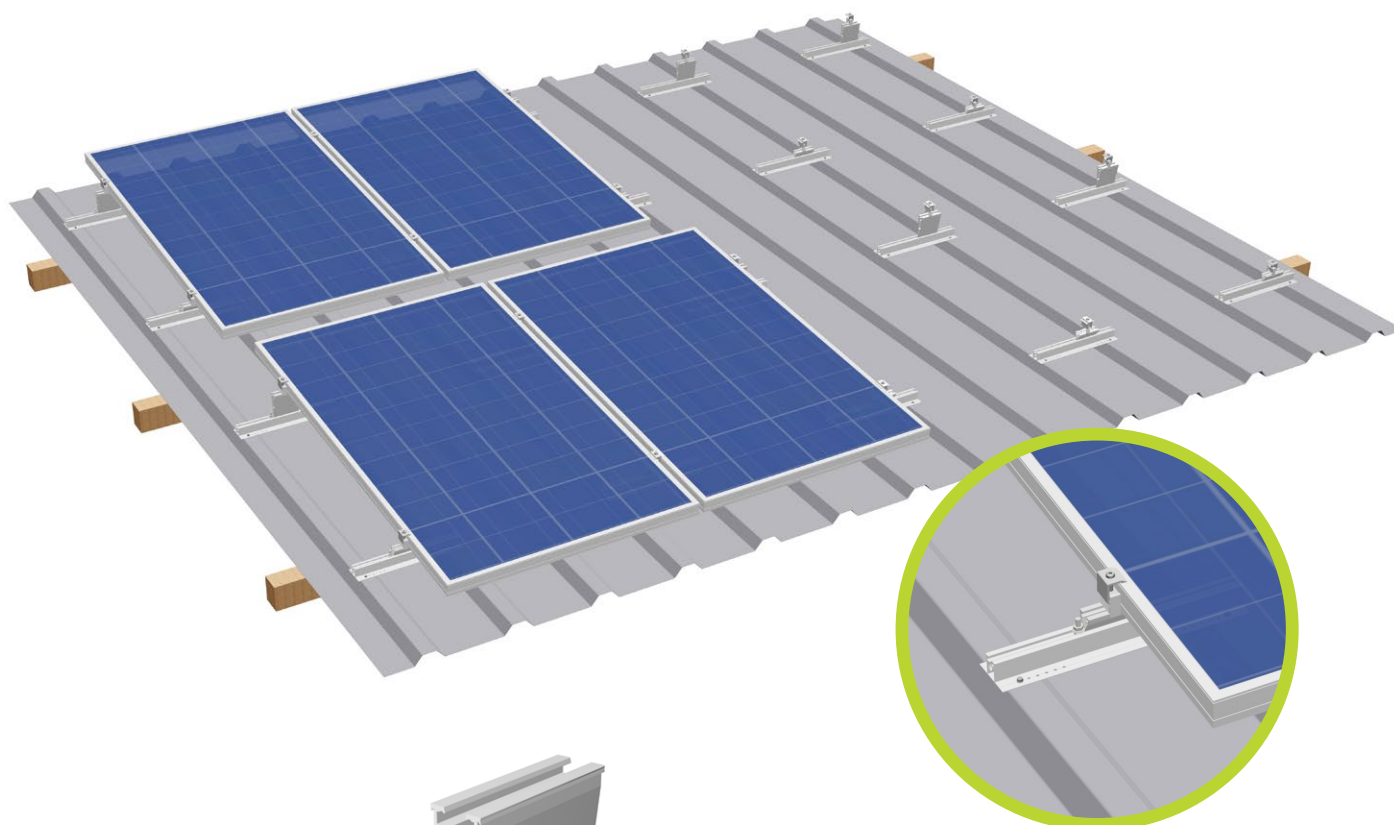
5° with portrait installation / 7° with landscape installation

**Roof pitch:**

20° max.

**Advantages:**

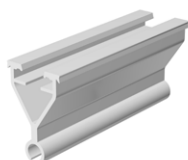
- Low material and fitting costs
- Optimised irradiation angles for higher yields
- Better self-cleaning
- Maximum use of space through optional East-West orientation
- prefabricated with holes and EPDM sealing tape



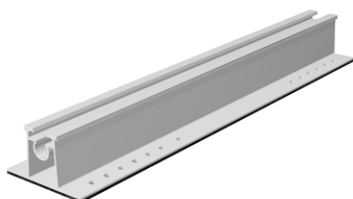
**Lift Multi adapter rear**



**Lift Multi adapter front**



**Trapezoidal sheet metal rail Lift**



**End clamp AK II Klick 30-50 A**



**Mid clamp AK II Klick 30-50 A**



**Application:**

Trapezoidal sheet metal

**Fastening:**

Riveted or screwed to the raised seams

**Module type:**

Framed modules

**Module orientation:**

Portrait/landscape

**Module pitch:**

5° with portrait installation / 7° with landscape installation

**Roof pitch:**

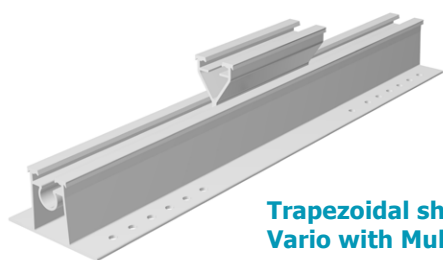
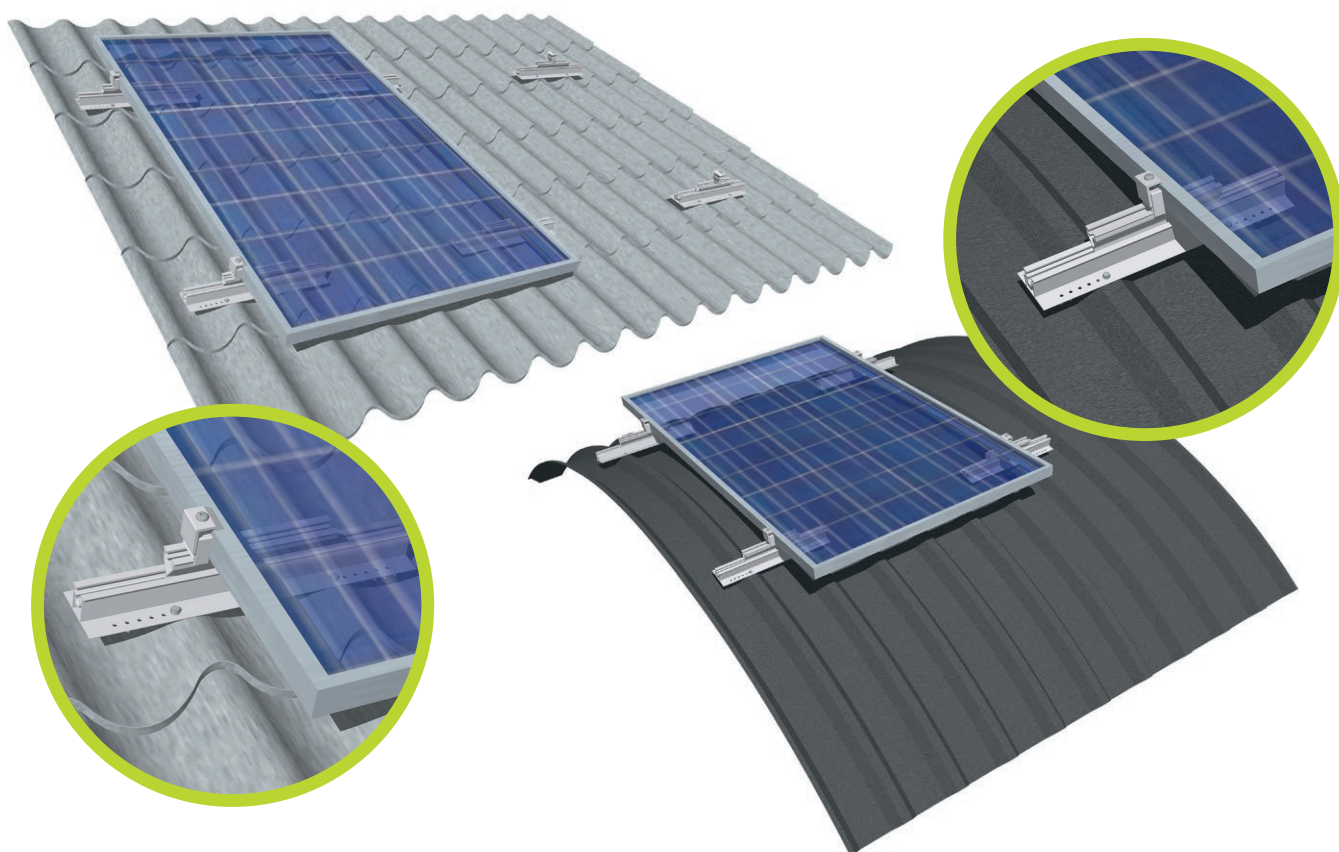
15° max. with portrait / 13° max. with landscape installation

**Layers of rails:**

Single layer

**Advantages:**

- Additional raise on slightly inclined roofs
- Optimised rear ventilation and module pitch
- Low material and fitting costs
- Variable length of module rows
- Trapezoidal sheet metal rail Lift is supplied prefabricated with 26 holes (5 mm) and EPDM sealing tape covered bottom side



Trapezoidal sheet metal rail  
Vario with Multi adapter front

End clamp EH AK II Klick 30-50 A



Mid clamp MH AK II Klick 30-50 A

**Application:**

Corrugated roof tile and curved trapezoidal sheet metal (barrel roofs with a radius larger than 3.5 m)

**Fastening:**

Riveted or screwed with sheet metal screws to the raised seams

**Module type:**

Framed modules

**Module orientation:**

Portrait/landscape

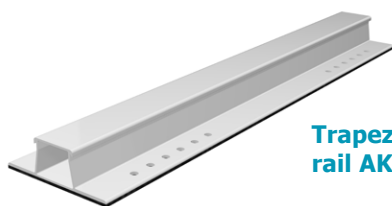
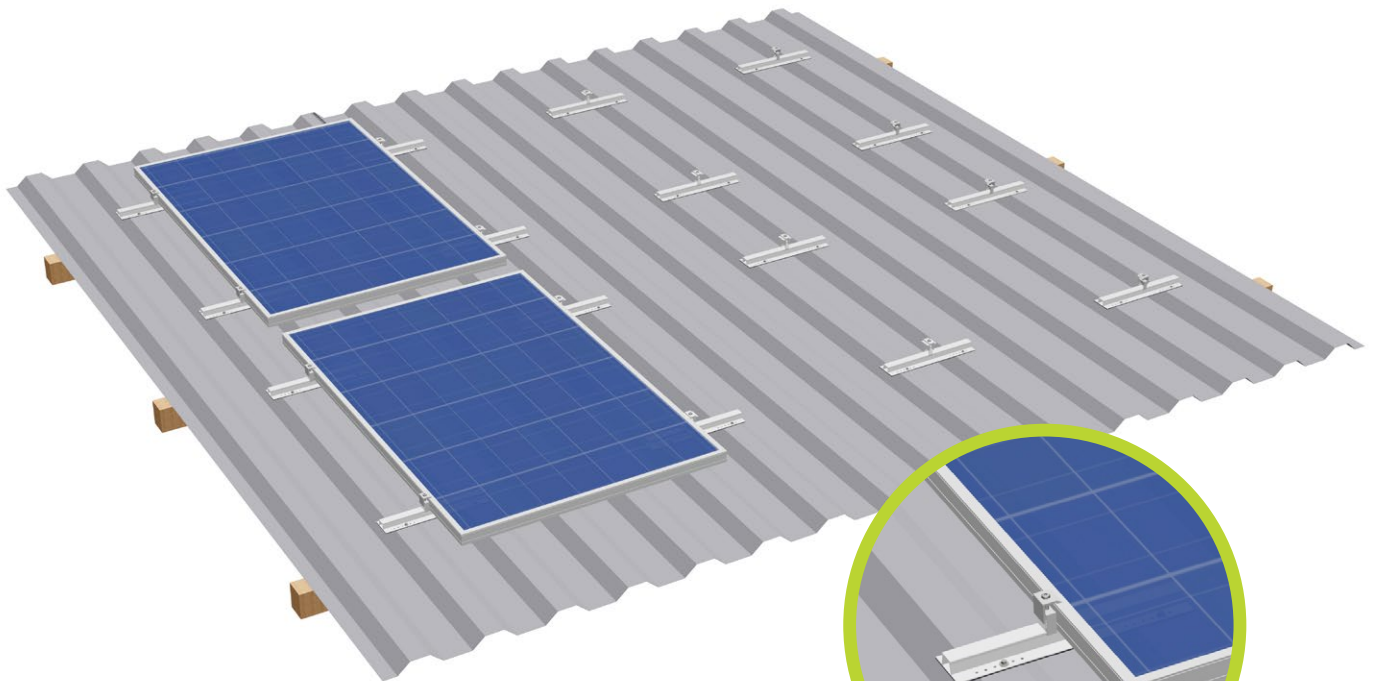
**Layers of rails:**

Single layer

**Advantages:**

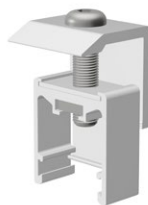
- Tension-free installation on curved roofs
- Tension-free installation on corrugated roof tiles
- Perfectly adapted to the roof shape
- Trapezoidal sheet metal rail Vario is supplied prefabricated with 26 holes (5 mm) and EPDM sealing tape covered bottom side





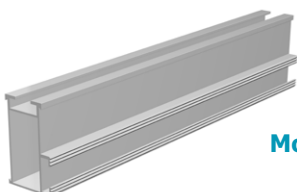
Trapezoidal sheet metal rail AK I=395 mm

End clamp AK II Klick 30-50 A



Mid clamp AK II Klick 30-50 A

Cross adapter clamp AK



Mounting rail ST-AK 13/60

**Application:**

Trapezoidal and corrugated sheet metal

**Fastening:**

Screwed or riveted onto raised corrugations

**Module type:**

Framed and frameless modules

**Module orientation:**

Landscape/portrait

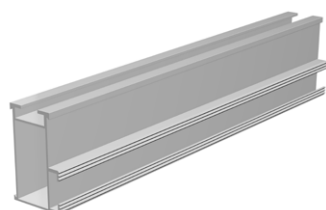
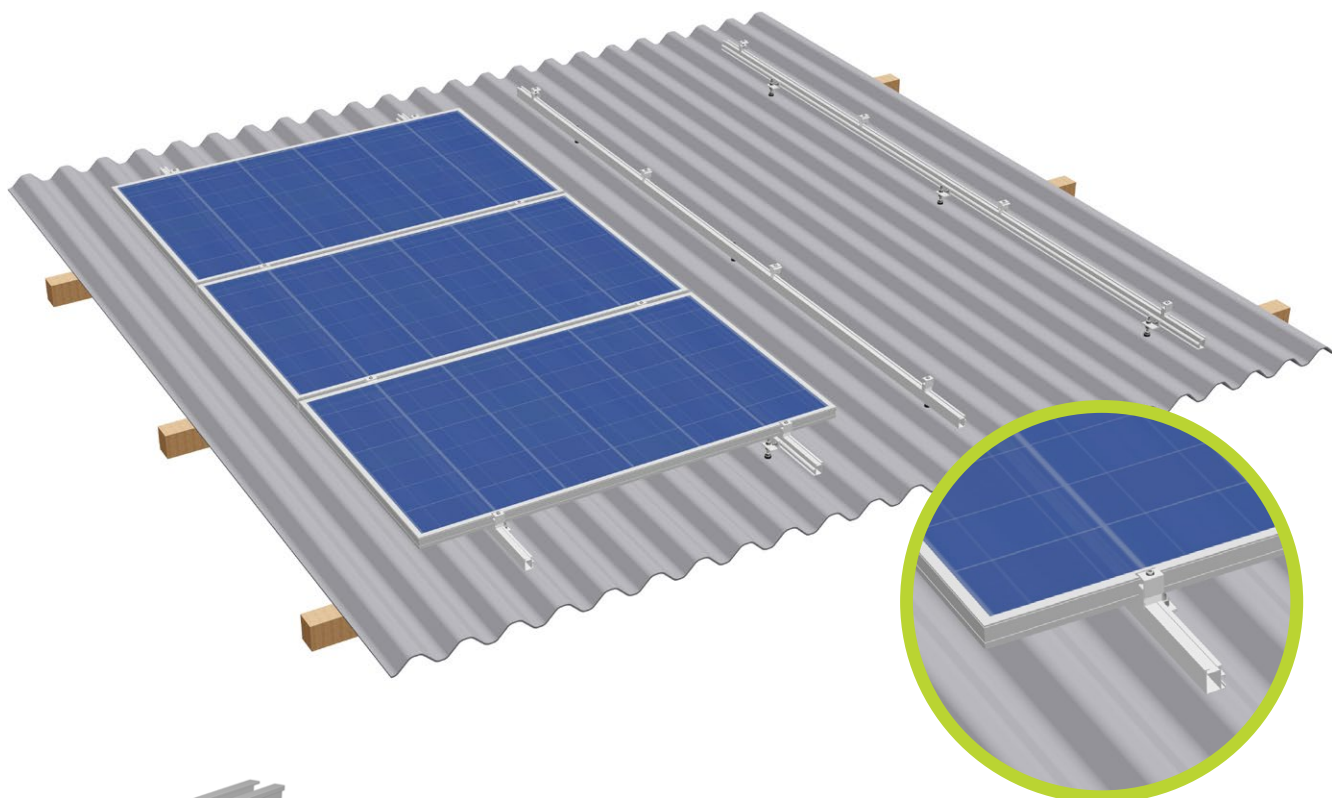
**Layers of rails:**

Single/double layer

**Advantages:**

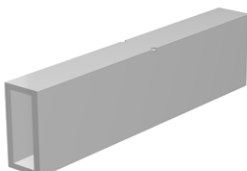
- Low material/fitting costs
- Every size of module array possible
- Rail lengths of 395 mm, 3150 mm and 6200 mm
- High rigidity rails suitable for heavier loads
- Rail segments 395 mm (Trapezoidal sheet metal AK complete / I=395 mm) are supplied prefabricated with 24 holes (5 mm) and EPDM sealing tape covered bottom side





**Mounting rail ST-AK  
13/60**

**Splice 13**



**End clamp AK II Klick 30-50 A**



**Mid clamp AK II Klick 30-50 A**



**Hanger bolt M10x200**

**Solar fastener type BZ  
for metal rafters**



**Bracket 60mm M10**

#### **Application:**

Fibre-cement boards / sandwich elements /  
trapezoidal sheet metal

#### **Fastening:**

Hanger bolts / solar fasteners with brackets

#### **Module type:**

Framed and frameless modules

#### **Module orientation:**

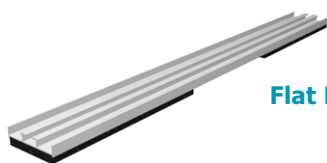
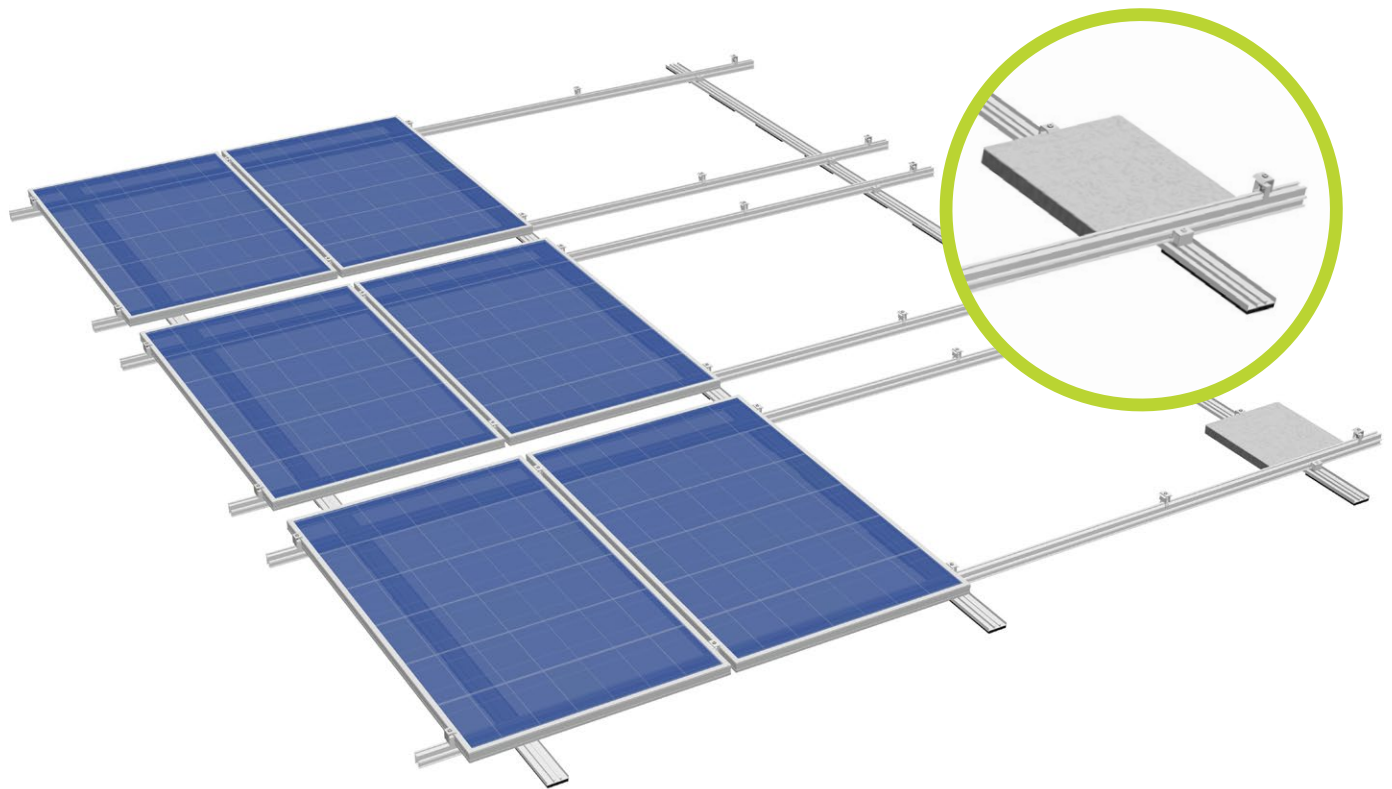
Landscape / portrait

#### **Layers of rails:**

Single / double layer

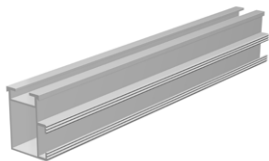
#### **Advantages:**

- Low fitting costs
- Height adjustable
- Suitable for large distances between rafters
- Solar fastener type A or hanger bolts for wood rafters /  
solar fastener type BZ for metal rafters



**Flat Direct floor rail**

**Ridge connector  
bended**



**Mounting rail ST-AK 7/47**

**Cross adapter clamp AK**



**End clamp AK II Klick 30-50 A**

**Mid clamp AK II Klick 30-50 A**



**Application:**

Pitched roofs with foil/bitumen roofing and sandwich elements; other roof types upon request

**Fastening:**

Parallel to the roof, non-penetrative; additional ballast

**Roof pitch:**

Up to 30 degrees

**Module type:**

Framed modules (frameless modules upon request)

**Module orientation:**

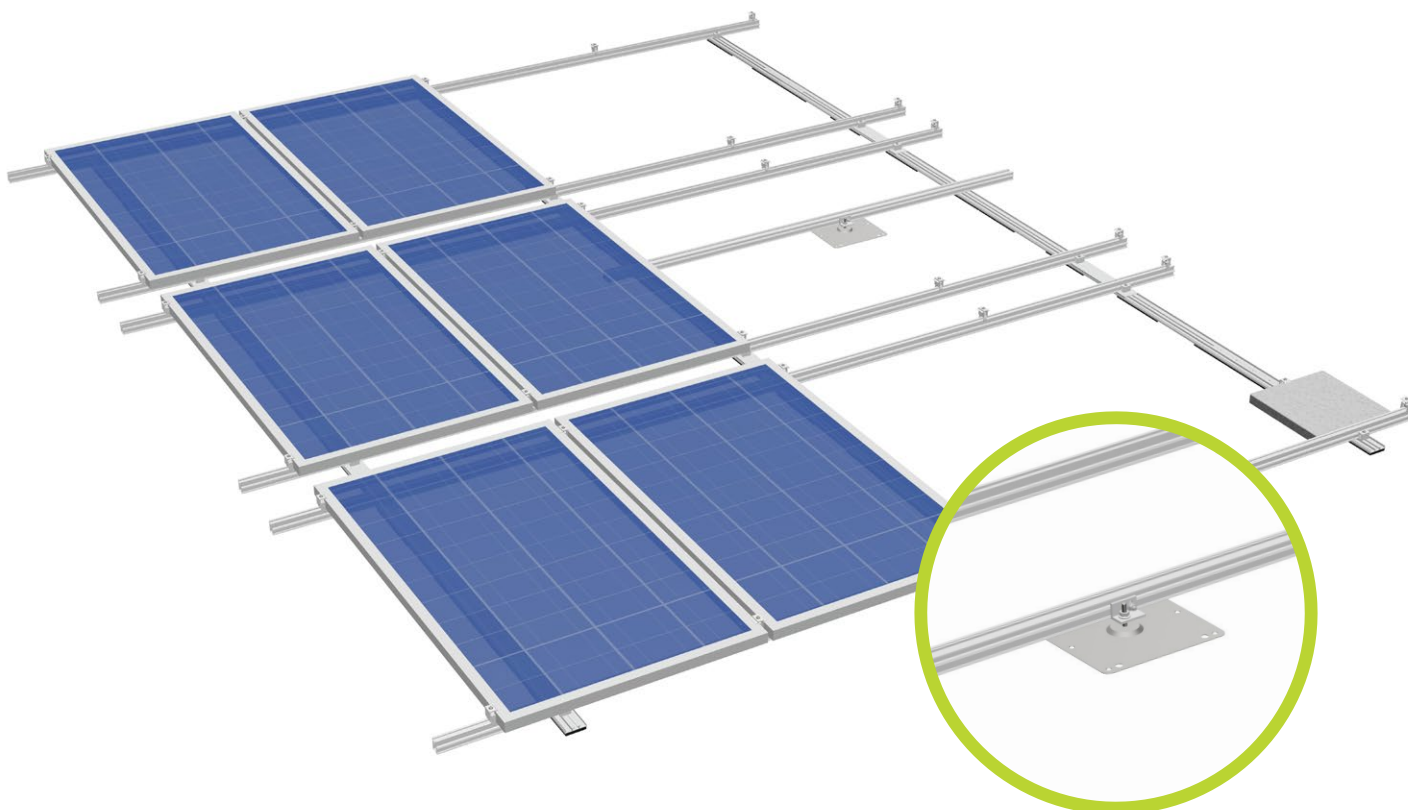
Portrait (landscape upon request)

**Layers of rails:**

Double layer

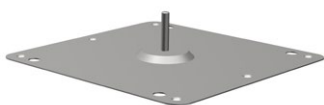
**Advantages:**

- No roof penetration
- Minimised additional ballast thanks to aerodynamic optimisation
- Perfect for east-west orientation like saddle roof, double-sided
- Has lightning-current-carrying capacity
- Optional roof connection points extend potential uses



Assembly post + ridge rail

Assembly post



Covering

Bracket 60mm M10



Mono-pitch roof



Butterfly roof, double-sided



Butterfly roof, single-sided

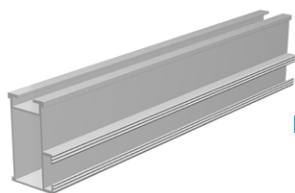
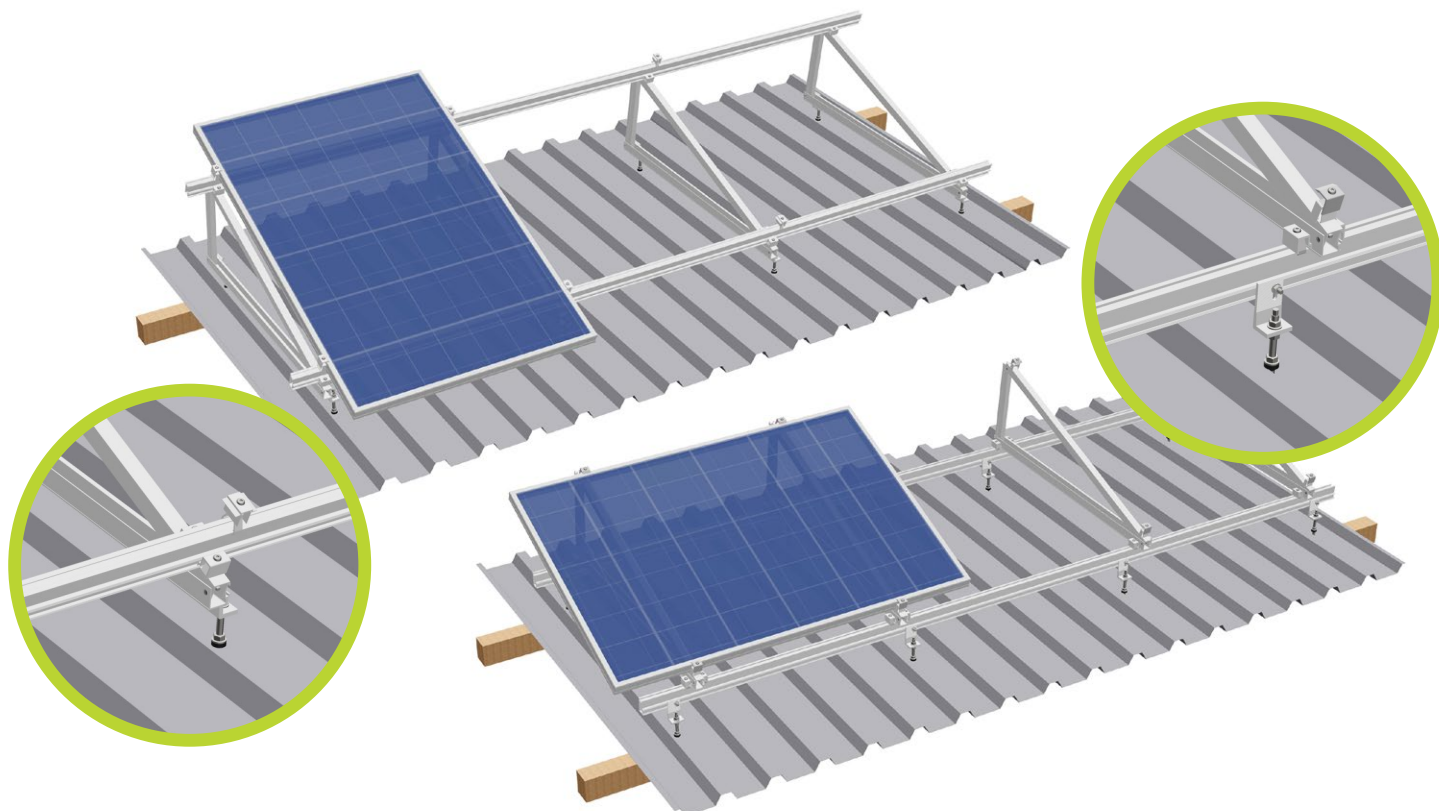


Saddle roof, double-sided



Saddle roof, single-sided

... and other roof types



Mounting rail ST-AK 13/60

End clamp AK II Klick 30-50 A



Mid clamp AK II Klick 30-50 A

Cross adapter clamp AK



S:FLEX Triangle  
Delta AK 1230 5° – 45°

Hanger bolt M10x200



Bracket 60mm M10

**Application:**

Fibre-cement boards / sandwich elements /  
trapezoidal sheet metal

**Pitch:**

Available in increments of 5° up to 45°,  
other angles available upon request

**Module type:**

Framed and frameless modules

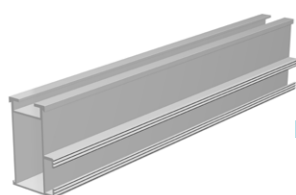
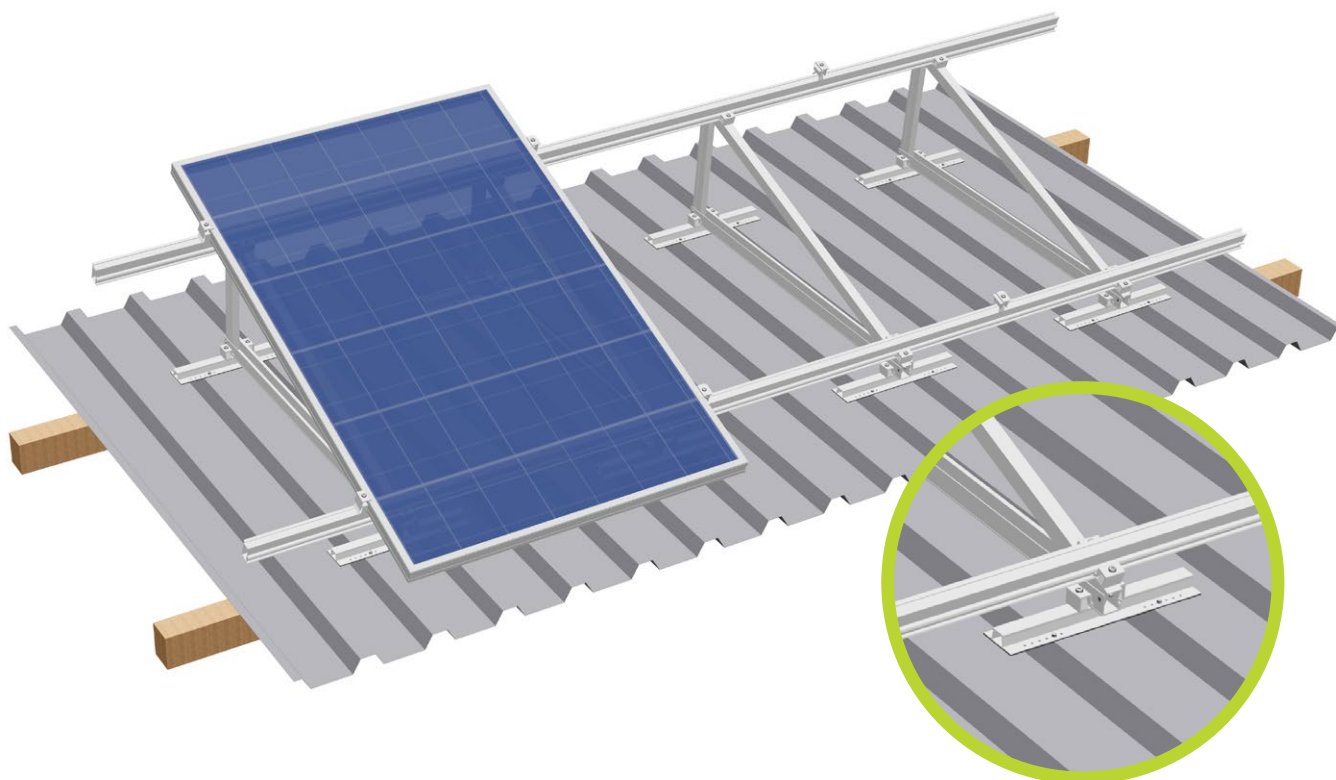
**Module orientation:**

Portrait / landscape

**Advantages:**

- Free choice of size and position of the module array possible
- Perfect also for small systems of 1, 2, 4 or 8 modules
- Triangles are shipped folded up for less freight and storage costs





Mounting rail ST-AK 13/60

End clamp AK II Klick 30-50 A



Mid clamp AK II Klick 30-50 A

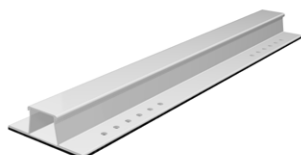


Cross adapter clamp AK



S:FLEX Triangle  
Delta AK 1230 5° – 45°

Trapezoidal sheet  
metal rail I=395



#### Application:

Trapezoidal and corrugated sheet metal

#### Pitch:

Available in increments of 5° up to 45°,  
other angles available upon request

#### Module type:

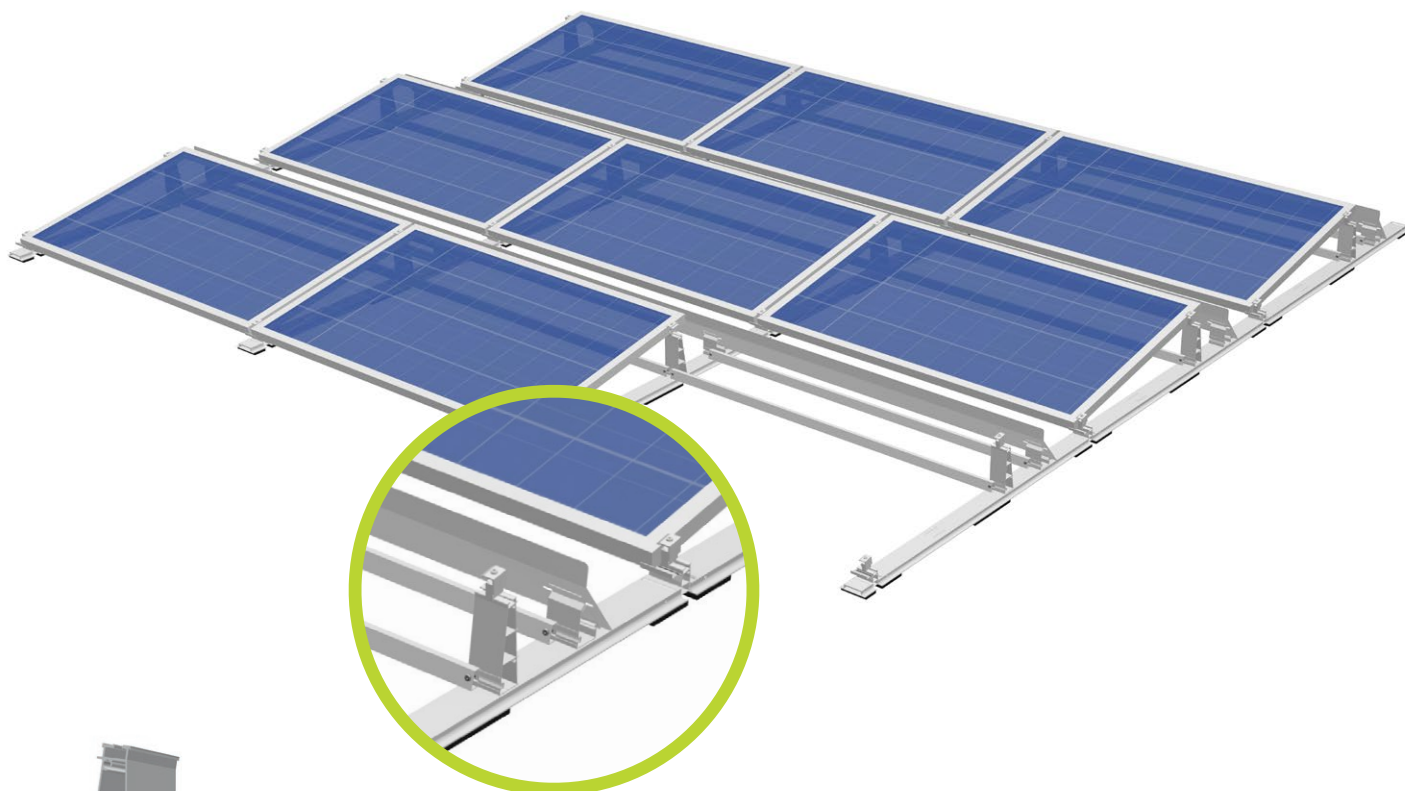
Framed and frameless modules

#### Module orientation:

Portrait/landscape

#### Advantages:

- Free choice of size and position of the module array possible
- Perfect also for small systems of 1, 2, 4 or 8 modules
- Triangles are shipped folded up for less freight and storage costs



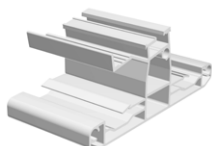
**LEICHTmount RAIL 2.0 S  
Tower**

**LEICHTmount RAIL 2.0 S  
Tower wind shield**



**End clamp AK II Klick 30-50 A**

**Mid clamp AK II Klick 30-50 A**



**LEICHTmount RAIL 2.0 S  
Base 10°**

**LEICHTmount RAIL 2.0 S  
Floor rail type 1618-2**



### **Application:**

Flat roof with foil, bitumen, gravel, green roof, metal, concrete

### **Module orientation:**

South

### **Inclination:**

10° / 15°

### **Module type:**

Framed modules

### **Building height:**

25 m max. (up to 50 m upon request)

### **Roof inclination:**

5° max.

### **Edge clearance:**

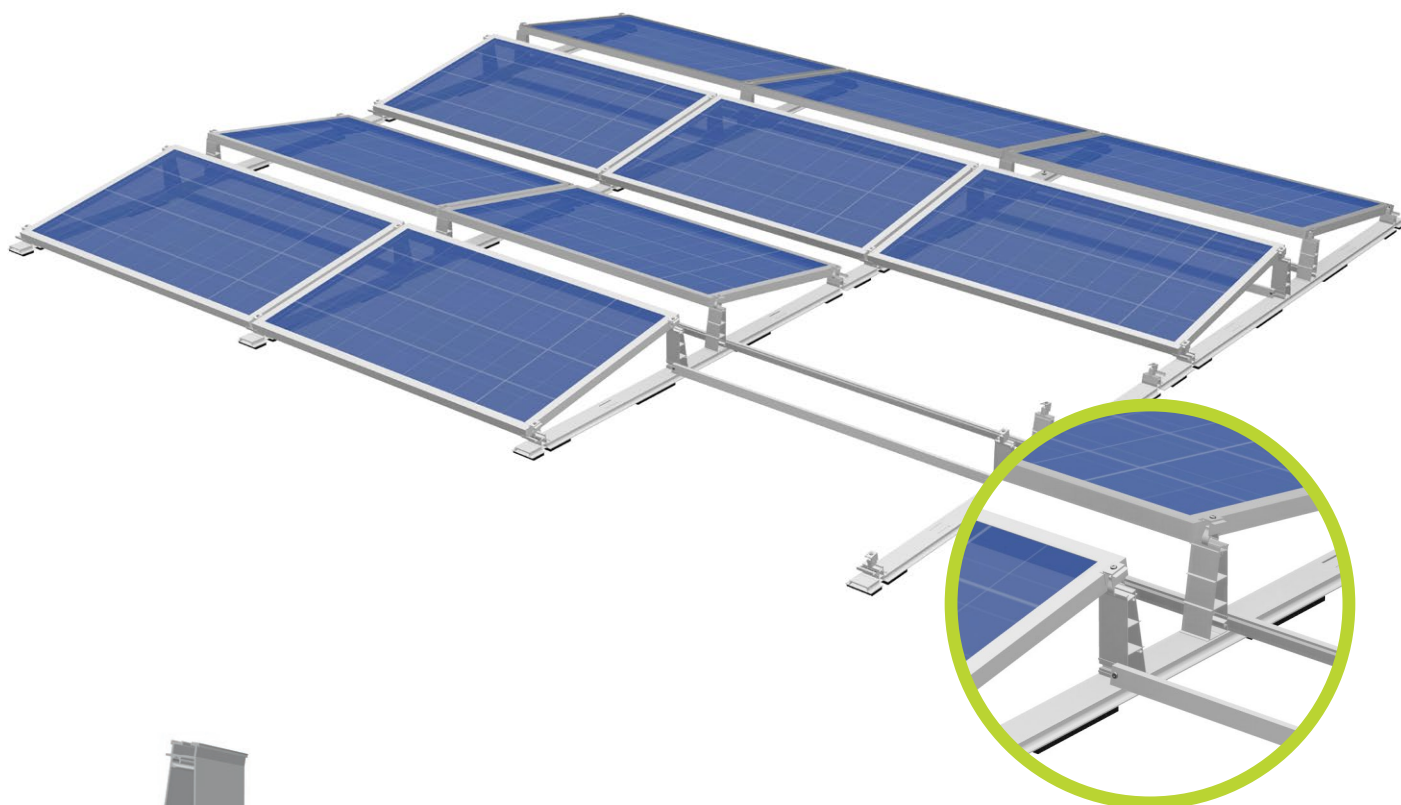
Fitting in the roof edge and corner regions possible

### **System size:**

2 modules min. / 20x20 m module area max.

### **Advantages:**

- No roof penetration possible
- Low area load / minimised ballast thanks to aerodynamic design
- Optimised load distribution through ground rails
- Suitable for all common module sizes
- Has lightning-current-carrying capacity



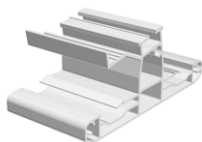
**LEICHTmount RAIL 2.0 EW  
Tower**

**End clamp AK II Klick 30-50 A**



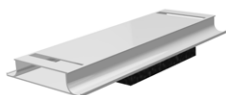
**Mid clamp AK II Klick 30-50 A**

**LEICHTmount RAIL 2.0 EW  
Base 10°**



**LEICHTmount RAIL 2.0 EW  
Floor rail type 2013**

**LEICHTmount RAIL 2.0 EW  
Connecting rail**



#### **Application:**

Flat roof with foil, bitumen, gravel, green roof, metal, concrete

#### **Module orientation:**

East–West

#### **Inclination:**

10° / 15°

#### **Module type:**

Framed modules

#### **Building height:**

25 m max. (up to 50 m upon request)

#### **Roof inclination:**

5° max.

#### **Edge clearance:**

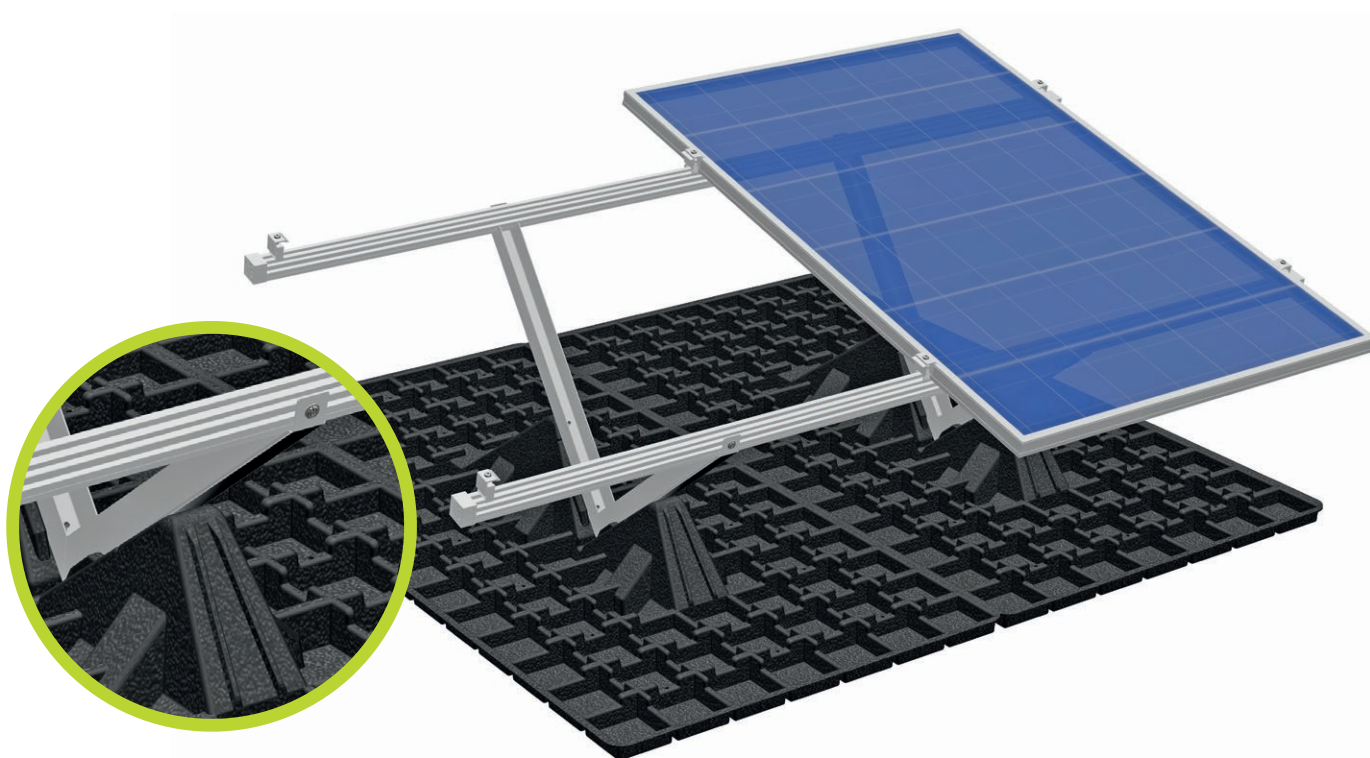
Fitting in the roof edge and corner regions possible

#### **System size:**

2 module pairs min. / 20x20 m module area max.

#### **Advantages:**

- No roof penetration
- Low area load / minimised ballast thanks to aerodynamic design
- Optimised load distribution through ground rails
- Suitable for all common module sizes
- Has lightning-current-carrying capacity



**Application:**

Green roof (extensive)

**Fastening:**

Without roof penetration, ballasted

**Options:**

South and East-West orientation

**Module pitch:**

10°, 15°, 20°

**Module type:**

Framed modules

**Module orientation:**

Landscape/portrait

**Roof pitch:**

5° max.

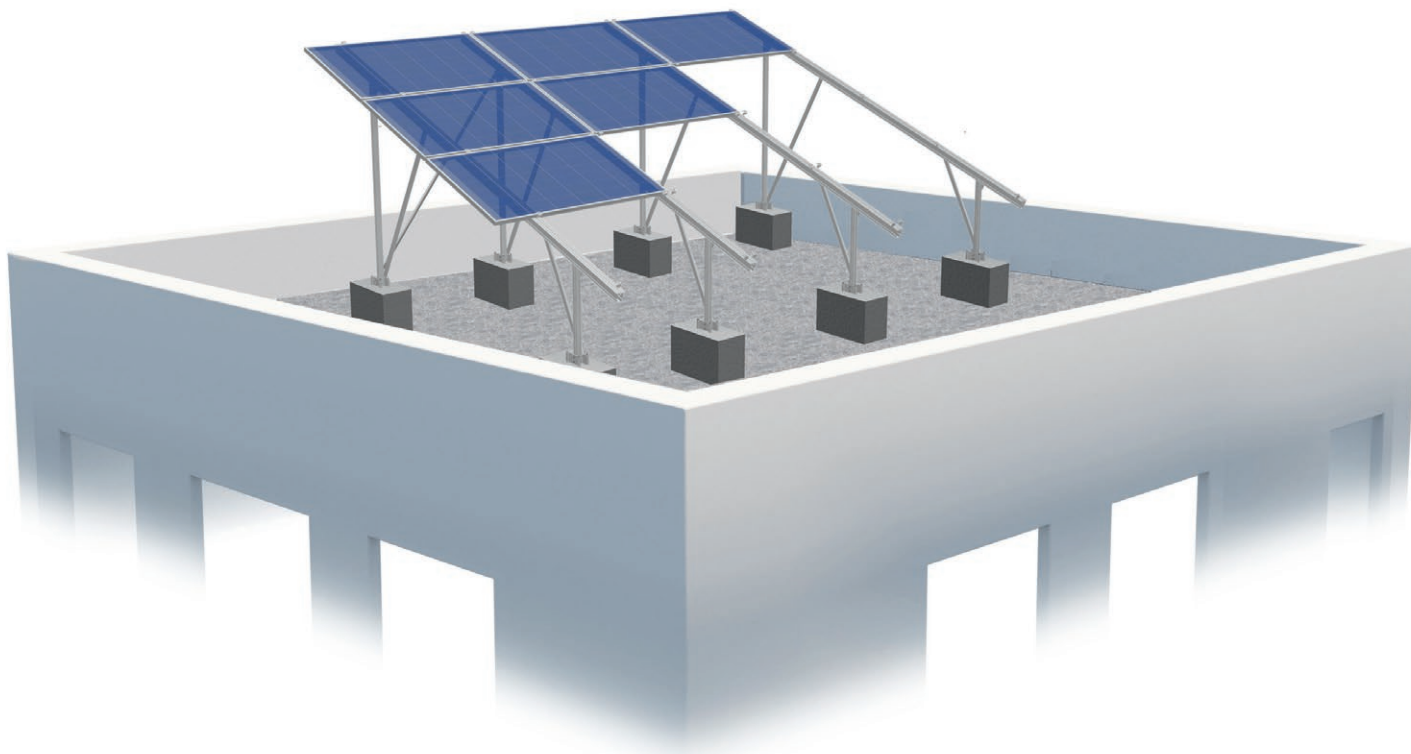
**System size:**

2 modules min.

**Advantages:**

- No roof penetration
- High water storage volume
- Extremely fast installation
- Suitable for all common module sizes
- Integrated fall protection (optional)





**Base rail  
Delta Concrete**

**Pillar Delta Concrete FS 9/40**



**Top Delta Concrete**

**Base Delta Concrete**



**End clamp Hawk HK 25-45 I=40  
Grounding kit**

**Mid clamp Hawk HK 25-45 I=40  
Grounding kit**



**Application:**

Flat roof

**Fastening:**

Concrete, screw fastening

**Options:**

South and East-West orientation

**Module type:**

Framed, frameless (additional horizontal rail), bifacial

**Module orientation:**

Landscape / portrait

**Module pitch:**

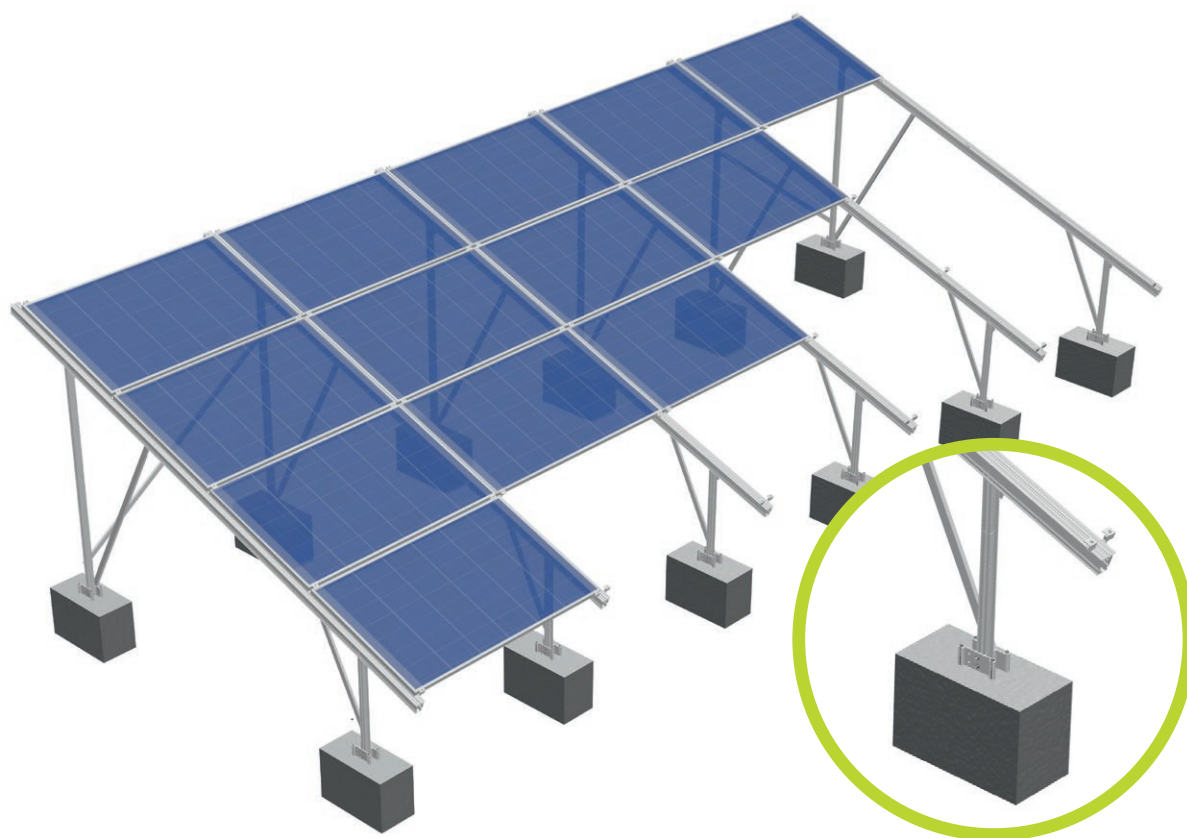
up to 20°

**Maximum module field size:**

12x4 modules (landscape) / 12x3 modules (portrait)

**Advantages:**

- Designed to be used on flat concrete roofs
- Excellent rear ventilation ensuring high yields, making it particularly suitable for hot regions
- Light-weight, material-saving design
- Offers the possibility to build over obstacles
- No drilling of aluminium on site



**Base rail  
Delta Concrete**



**Pillar Delta Concrete FS 9/40**



**Top Delta Concrete**



**Base Delta Concrete**



**End clamp Hawk HK 25-45 I=40  
Grounding kit**



**Mid clamp Hawk HK 25-45 I=40  
Grounding kit**



**Application:**

Ground mount system

**Fastening:**

Concrete, screw fastening

**Options:**

South and East-West orientation

**Module type:**

Framed, frameless (additional horizontal rail), bifacial

**Module orientation:**

Landscape / portrait

**Module pitch:**

up to 20°

**Pitch:**

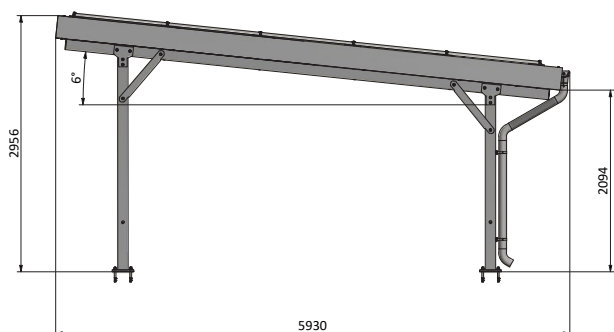
N-S: any; E-W: module area 1° / terrain 10°

**Maximum module field size:**

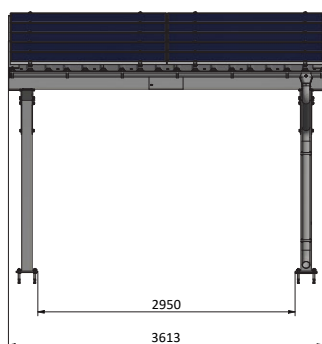
12x4 modules (landscape) / 12x3 modules (portrait)

**Advantages:**

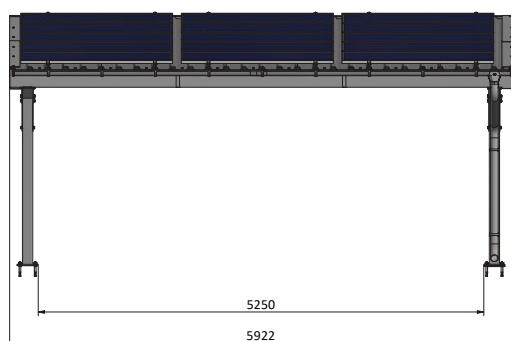
- Designed for ground-mount on concrete foundations
- Light-weight, material-saving design
- Offers the possibility to build over obstacles
- No drilling of aluminium on site



Dimensions – side view



Carport Single dimensions – front view



Carport Double dimensions – front view

## Parking lots:

1 or 2 parking spaces, expendable up to 12 freely combinable single/double segments for a maximum of 24 parking spaces

## Foundation:

Anchored in the ground / concrete

## Height:

Headroom: 2.09 m / Max. height: 2.95 m

## Roof area / Module field size:

Single: 22 m<sup>2</sup> / 10 modules; Double: 35 m<sup>2</sup> / 15 modules

## Roof pitch:

6°

## Module orientation:

Landscape / portrait

## Module size:

All common sizes

## Materials:

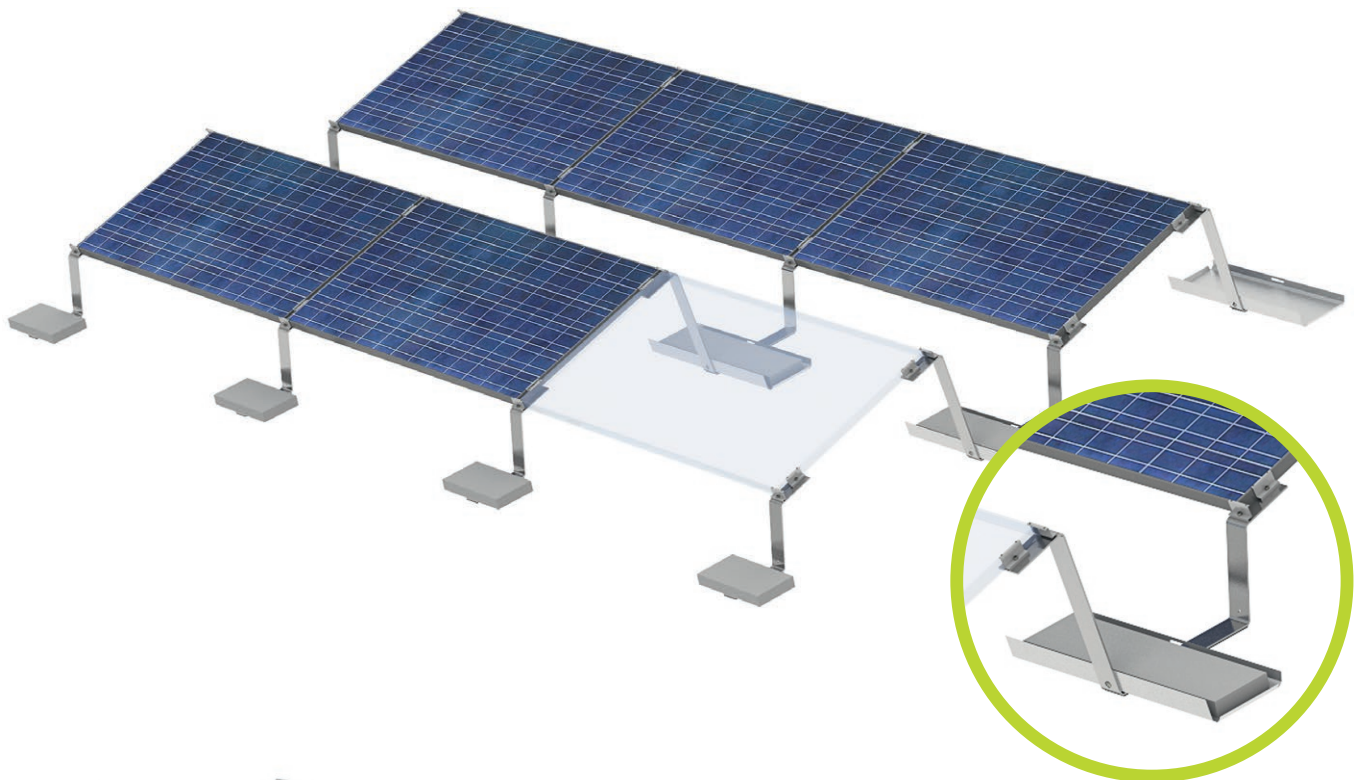
Carport: hot-dip galvanized steel, powder coated

Sheet metal: continuous, 0.75 mm thick

Solar fastening: aluminium

## Colour:

Matt black (RAL 9005), anthracite trapezoidal sheet



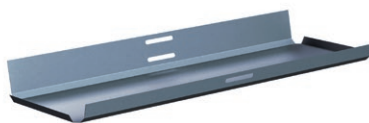
**LEICHTmount  
Ground Mount S  
Connector**

**LEICHTmount G S  
Front Part**



**LEICHTmount G S  
End Part**

**LEICHTmount  
Ballast Tray 880**



**Application:**

Ground Mount System

**Module orientation:**

South

**Module tilt:**

15°/20°

**Module type:**

Framed modules

**Max. ground slope:**

20°

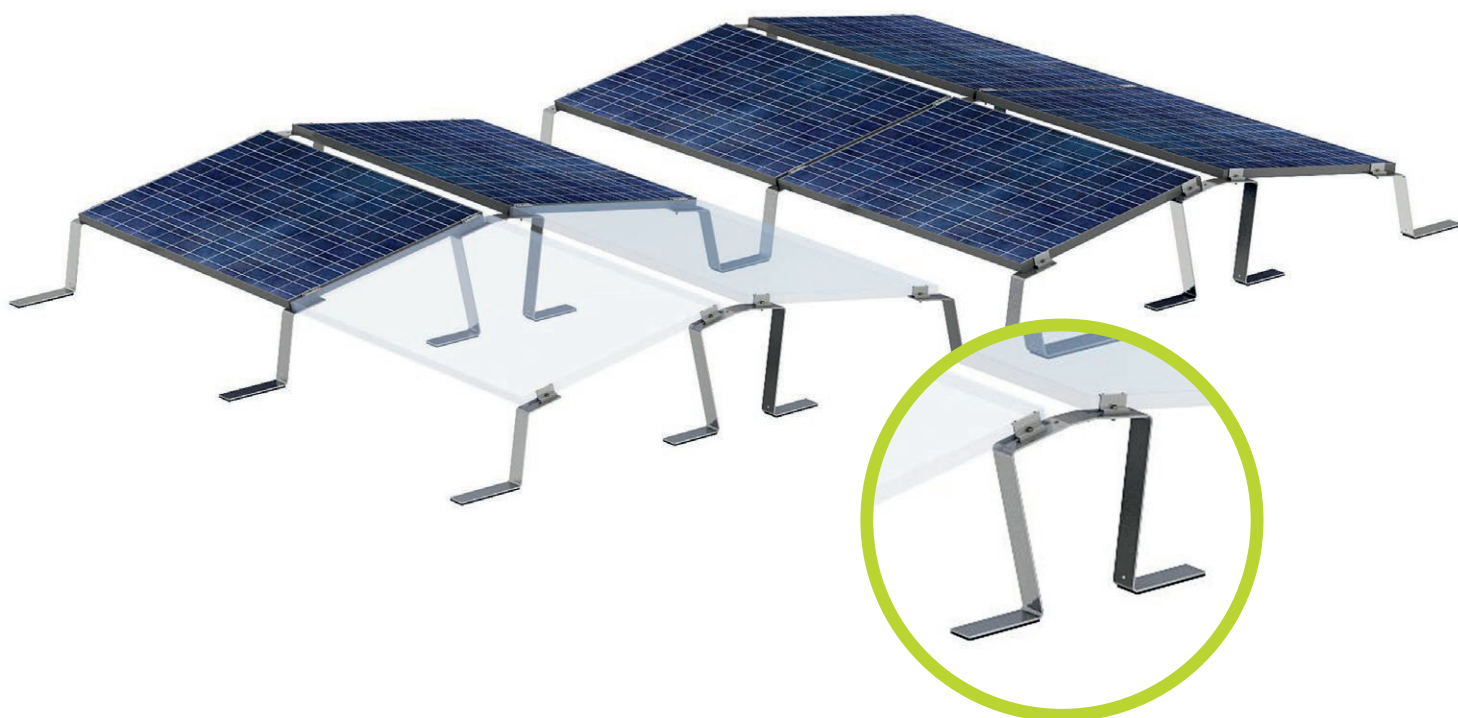
**System size:**

2 x 3 modules min.

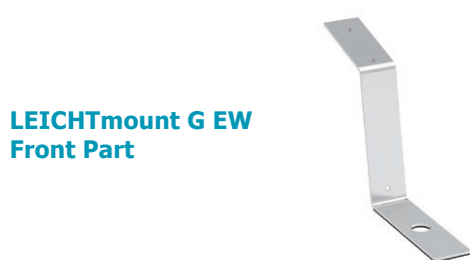
**Advantages:**

- No pile driving or major excavation work needed
- Suitable for a wide range of surfaces such as earth, gravel, concrete
- Reduced transport and storage costs thanks to low volume packaging





**LEICHTmount G EW  
Top Part**



**LEICHTmount G EW  
Front Part**



**Mid clamp 80mm  
with grounding pins**

**Application:**

Ground Mount System

**Module orientation:**

East–West

**Module tilt:**

10°

**Module type:**

Framed modules

**Max. ground slope:**

20°

**System size:**

2 x 4 modules min.

**Advantages:**

- No pile driving or major excavation work needed
- Suitable for a wide range of surfaces such as earth, gravel, concrete
- Reduced transport and storage costs thanks to low volume packaging

#### Grounding clamp DEHN Uni

- To integrate the mounting system into the building's equipotential bonding system and to connect it to earth
- Stainless steel to prevent contact corrosion
- Connection by means of hammerhead bolt and locking nut (positive and frictional locking)
- Diameter of clamping area for aluminium round wire: 8 - 10 mm / Connection cross-section of equipotential bonding conductor: 4 - 50 mm<sup>2</sup>

#### OBO equipotential bonding clamp

- For equipotential bonding of the mounting rails by means of aluminium round wire
- Connection by means of hammerhead bolt and locking nut (positive and frictional locking)
- Diameter of clamping area for aluminium round wire: 8 - 10 mm

#### Splice 5/7/13 Grounding

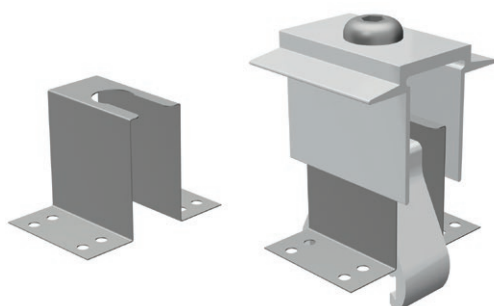
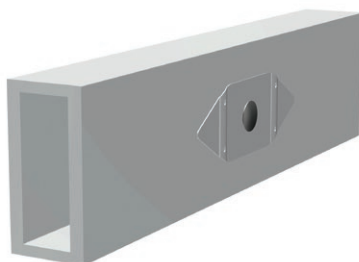
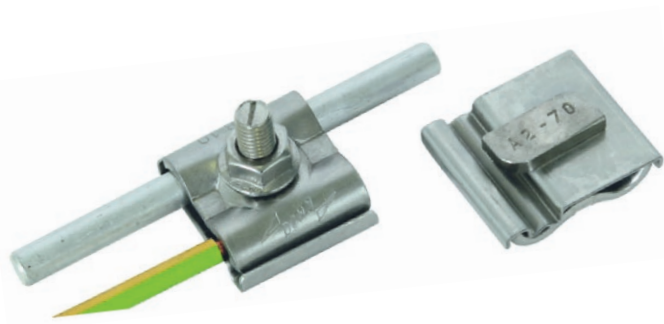
- Equipotential bonding between the rails by means of a corresponding connector with stainless steel earthing blades

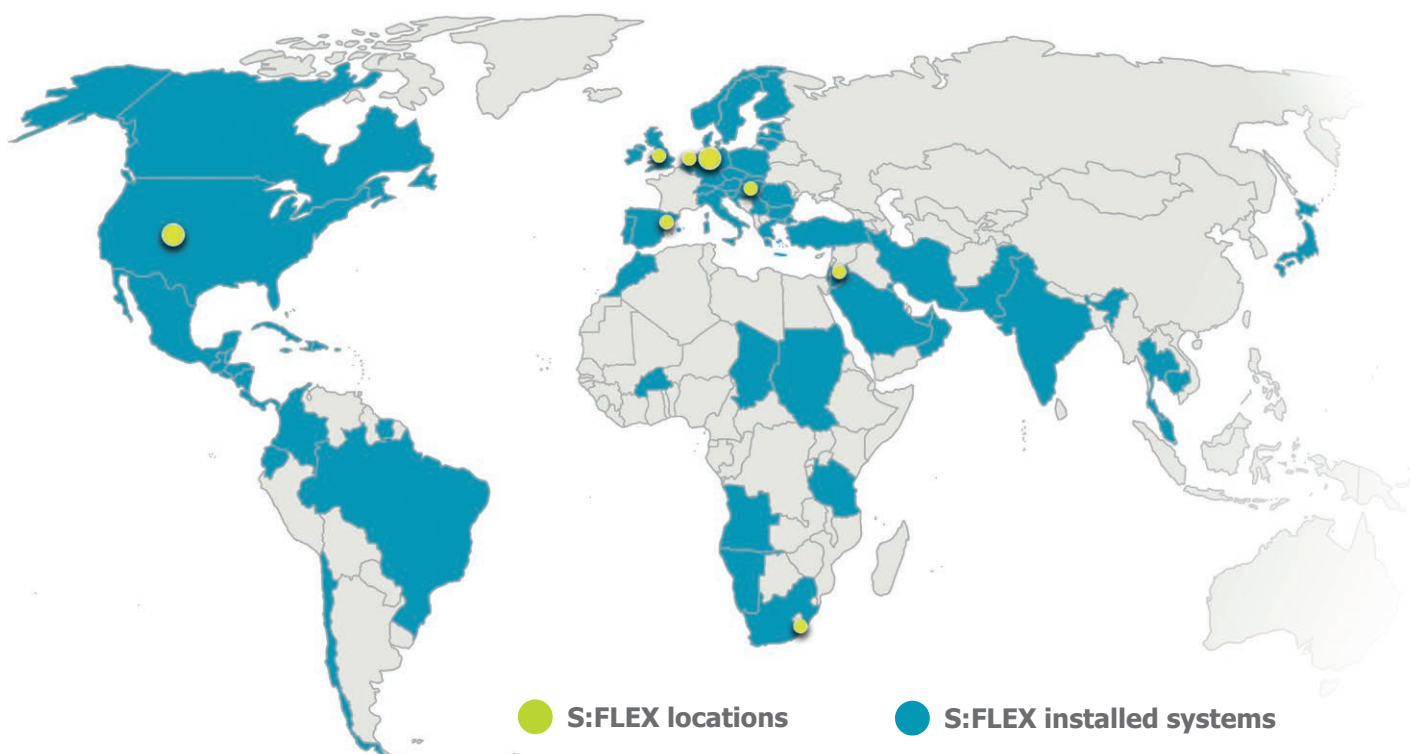
#### MH AK Klick 30-50 Earthing plate / Earthing plate 4x2

- For integration of the module frames into the equipotential bonding system
- Equipotential bonding between the module frame and substructure
- Breaks through the anodised layer
- Stainless steel
- For pre-assembly and installation on site

#### Earthing cable clip

- For connection of two metallic components to each other (e.g. rail and module frame or 2 module frames to each other) by means of cables
- For material thickness from 1.5 to 2.5 mm
- For electrical cables with a cross-section of 6 mm<sup>2</sup>




**S:FLEX GmbH HQ**

Reinbeker Weg 9  
21029 Hamburg  
Germany  
Phone +49-40-688 93 17 0  
Fax +49-40-688 93 17 99  
info@sflex.com  
www.sflex.com

**S:FLEX GmbH**

Elsäßer Straße 12  
79189 Bad Krozingen  
Germany  
Phone +49-761 888 56 08 0  
Fax +49-761 888 56 08 39  
info@sflex.com  
www.sflex.com

**S:FLEX GmbH**

Maulbeerstraße 13b  
15834 Rangsdorf / Berlin  
Germany  
Phone +49-33708 35 53 0  
info@sflex.com  
www.sflex.com

**S:FLEX Mounting Systems UK**

Unit 5, Skypark International  
Blenheim Way  
Liverpool L24 1YH  
United Kingdom  
Phone +44-151 448 5769  
info-uk@sflex.com  
www.sflex.com

**S:FLEX Nederland**

Koematen 33B  
8331 TK STEENWIJK  
Netherlands  
Phone +31-521 34 40 29  
nederland@sflex.com  
www.sflex.com

**S:FLEX España/Portugal**

C/ d'America, 54  
08205 Sabadell / Barcelona  
Spain  
Phone +34-627 432 559  
info@sflex.com  
www.sflex.com

**S:FLEX South-East Europe**

Phone +49-761-888 56 08 30  
info@sflex.com  
www.sflex.com

**S:FLEX Southern Africa**

37 Buckingham Road  
3610 Kloof (Durban)  
South Africa  
Phone +27-31 764 1940  
Fax +27-76 765 4416  
info-sa@sflex.com  
www.sflex.com

**S:FLEX Middle East**

P.O. Box 109  
11947 Amman  
Jordan  
Phone +49-174 917 53 41  
info@sflex.com  
www.sflex.com

**S:FLEX Inc. USA**

info@sflex.com  
www.sflex.com

